

[Link to budget](#)

[Link to Request to Plan](#)

**UNIVERSITY OF NORTH CAROLINA
REQUEST TO ESTABLISH
A NEW DEGREE PROGRAM – ANY DELIVERY METHOD**

Date: August 16, 2017

Constituent Institution: East Carolina University (ECU)

Is the proposed program a joint degree program? Yes X No

Joint Partner campus University of North Carolina Wilmington (UNCW)

Title of Authorized Program: Integrative Coastal and Marine Sciences (ICMS)

Degree Abbreviation: PhD

CIP Code (6-digit): 30.0000 Level: B M I D X

CIP Code Title: Multi-/Interdisciplinary Studies, General

Does the program require one or more UNC Teacher Licensure Specialty Area Code? Yes No X

If yes, list suggested UNC Specialty Area Code(s) here

If master's, is it a terminal master's (i.e. not solely awarded en route to Ph.D.)? Yes No

Proposed term to enroll first students in degree program: Term Fall Year 2018

Provide a brief statement from the university SACSCOC liaison regarding whether the new program is or is not a substantive change.

The proposed degree program involves a collaborative academic arrangement that will result in the award of a Joint PhD degree between East Carolina University (ECU) and the University of North Carolina Wilmington (UNCW), a Procedure 2 substantive change requiring SACSCOC notification prior to implementation. Research and instructional facilities from the UNC Coastal Studies Institute will also be used.

Identify the objective of this request (select one or more of the following)

- Launch new program on campus
- Launch new program online; Maximum percent offered online
 - Program will be listed in UNC Online
 - One or more online courses in the program will be listed in UNC Online
- Launch new site-based program (list new sites below; add lines as needed)
 - Instructor present (off-campus delivery)
 - Instructor remote (site-based distance education)

- PhD in Marine Science, College of William and Mary, Virginia Institute of Marine Science (CIP code 26.1302 - Marine Biology and Biological Oceanography); same as above.
- PhD in Coastal and Marine Systems Science, Texas A&M University-Corpus Christi (CIP code 26.1302 - Marine Biology and Biological Oceanography); same as above.
- PhD in Marine-Estuarine-Environmental Science, University of Maryland (CIP code 30.0101 - Interdisciplinary Studies – Biological and Physical Sciences); same as above.
- PhD in Marine Science, University of South Carolina (CIP code 26.1302 - Marine Biology and Biological Oceanography); same as above.

2. List institutions visited or consulted in developing this proposal. Also discuss or append any consultants' reports or committee findings generated in planning the proposed program.

- East Carolina University (ECU)
- University of North Carolina Wilmington (UNCW)
- UNC Coastal Studies Institute (CSI) in Manteo
- UNC-Chapel Hill
- North Carolina State University (NCSU)
- Duke University

This proposal was developed by a joint proposal committee of faculty and administrators appointed by ECU Provost Mitchelson and UNCW Provost Battles in 2014. The committee was charged with conceptualizing and designing a joint coastal PhD program that is acceptable to both institutions. The committee was comprised of equal membership from each institution. Each university had a representative of the faculty from life science, social science, physical science, health science, at-large faculty member, and an institute/center representative. The graduate deans from each institution served as co-chairs and were charged with convening the committee. The joint proposal committee met monthly using videoconferencing facilities and conducted joint site visits to view campus facilities. The committee used a survey instrument to gather input from faculty on both campuses. Faculty on both campuses had an opportunity to review the drafts of Appendix A and the request to establish at open forums prior to review by both campuses' curriculum and program development processes.

B. Admission. List the following:

1. Admissions requirements for proposed program (indicate minimum requirements and general requirements).

Minimum Requirements

- An M.S. degree or equivalent or a bachelor degree from a regionally accredited university. Admissions with a bachelor's degree may be considered on a case-by-case basis for students with strong undergraduate credentials in a closely related field.
- A minimum overall grade point average of at least 3.0 out of 4.0.
- GRE scores will be used as part of a holistic admission review process. To qualify for regular admission students should have a score of at least 65th

percentile (average for the verbal, quantitative and analytical writing sections). Students with lower scores may be considered for conditional admission.

- A score of at least 550 on the paper test or 79 on the internet-based Test of English as a Foreign Language (TOEFL) or a minimum score on the International English Language Testing System (IELTS) of 6.5 or 7.0 to be eligible for a teaching assistantship, for applicants whose native language is not English. TOEFL scores are good for two years from the date the test is administered.

2. Documents to be submitted for admission (listing).

- An application for graduate admission at the campus where the student desires primary residence submitted by the published deadline
- Official transcripts of all college work (undergraduate and graduate)
- Official scores on the Graduate Record Exam (GRE) less than five years old
- Three recommendations with accompanying letters from individuals in professionally relevant fields, including one from the intended faculty mentor
- A personal statement describing educational and professional experiences, their reasons for pursuing the ICMS degree, and career goals
- Current curriculum vita
- Official score on the TOEFL (if applicable). TOEFL scores are good for two years from the date the test is administered.
- Detailed summary of M.S. thesis research (maximum of three pages) (optional)
- Copies of publications (optional but recommended)

C. Degree requirements. List the following:

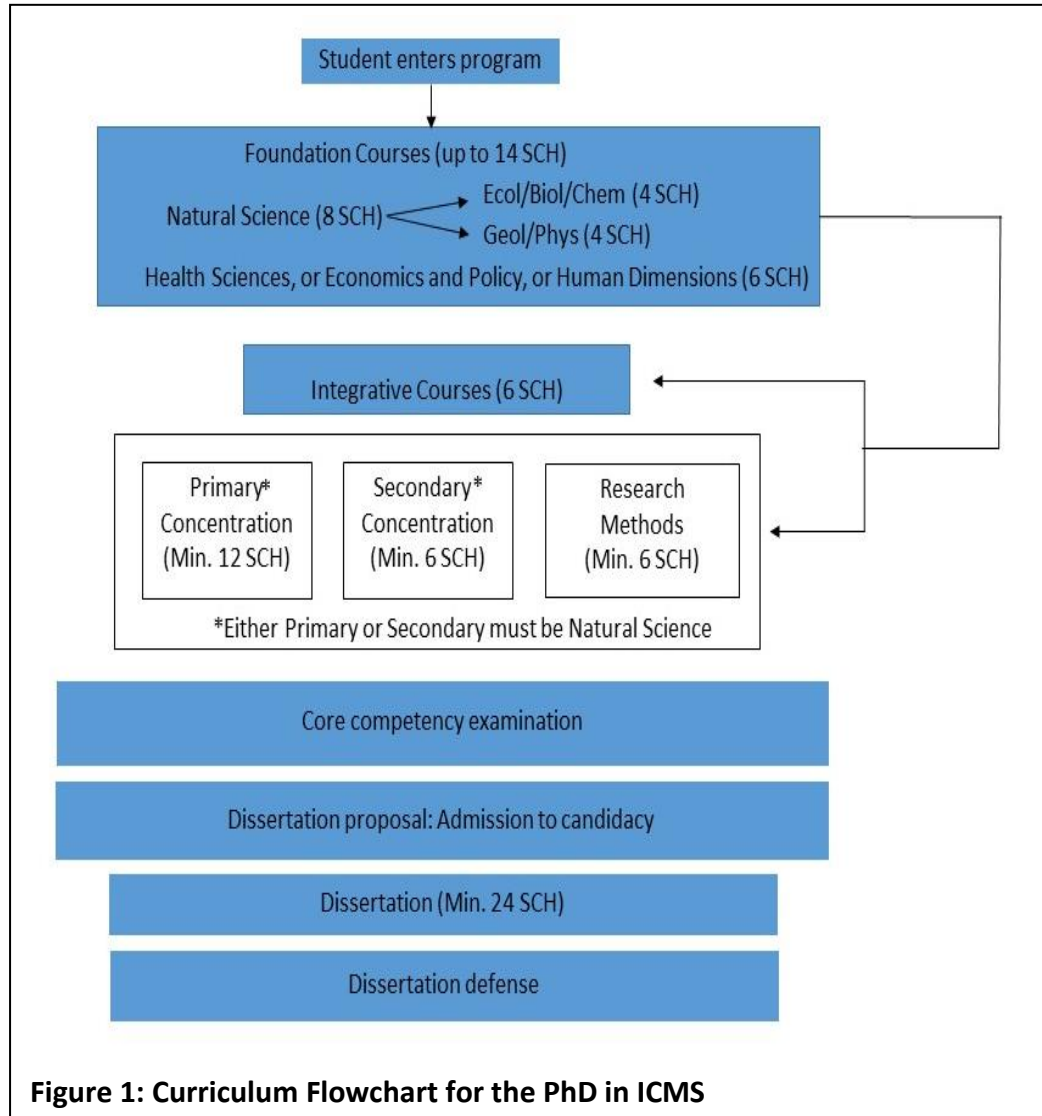
The proposed ICMS degree will require a minimum of 68 post-graduate credit hours (SCH), including dissertation credits. Typically, no more than 18 credit hours can be transferred from a prior master's degree. The actual number of hours will be determined by master's level and transfer credits earned and approved by the Director of the ICMS degree and each student's committee; mastery of the subject matter demonstrated through examination and research; and gaps identified in areas such as skills and methods required to conduct research or teach in the student's declared area of concentration. Courses at the 5000-level (or 500 level at UNCW) are available to students who enter without a master's or others who need them; however, those credits will not count towards the PhD.

Each student will select a primary course of study within one of the joint program's four concentrations:

- ***Natural Sciences***: This concentration includes coursework in the natural sciences (i.e., biological, chemical, geological, physical) or engineering associated with the coastal and marine environments.
- ***Economics and Policy***: This concentration includes coursework in economics and policy.
- ***Human Dimensions***: This concentration involves coursework in social sciences outside of economics (i.e. geography, anthropology).
- ***Health Sciences***: This concentration involves study related to public health impacts of the interface between human and environmental health along the coast from biomedical, environmental health, and public health science perspectives.

Request to Establish the ECU & UNCW PhD in Integrative Coastal and Marine Sciences (ICMS)
Document updated 9/2/17

Students in the proposed ICMS degree will complete, as part of the minimum 68 student credit hours (SCH) (including dissertation credits), the following coursework:



- 8 SCH in coastal natural sciences (4 SCH of coastal ecology/biology/chemistry and 4 SCH of coastal geology/physics).
- 6 SCH of required course work in a secondary concentration area in economics and policy, human dimensions, or health sciences.
- 6 SCH integrative core courses offered jointly on both campuses.
- A minimum of 12 SCH in their primary concentration area; a minimum of 6 SCH in their secondary concentration area.
- 6 SCH of PhD level research methodology in their primary concentration area.
- 24 SCH of dissertation research.

These requirements and the curriculum flowchart are displayed in Figure 1.

Each student selects a primary and secondary concentration area. Similarly, each student will be required to have one advisor from the primary area and another from the secondary area. Students in the program will only work with faculty that are research-active. Thus, each

student is co-advised by a social and natural scientist. Students entering with adequate qualifications in any specific area may place out of the required foundations courses for their primary or secondary concentration courses only after consultation with the appropriate course instructor, ICMS program director, major advisor and co-advisor. However, all students must take the integrative experience courses (ICMS 7003 and ICMS 7004, see Attachment 4, page 51). The student will work with the ICMS program director, PhD co-advisors and three other PhD committee members to determine the required coursework in their primary and secondary concentrations as well as the research methods coursework and advanced electives that are required.

1. Total hours required. State requirements for Major, Minor, General Education, etc.

- 68 post-graduate SCH. Typically, no more than 18 SCH can be transferred from a prior master's degree.
 - 14 SCH Foundations Courses
 - 6 SCH of Integrative Courses, ICMS 7003, ICMS 7004 (see Attachment 4, page 51)
 - 12 SCH of coursework in the primary concentration
 - 6 SCH of coursework in the secondary concentration
 - 6 SCH of research methods in primary concentration area
 - 24 SCH of dissertation

The specific coursework required to satisfy the primary, secondary, and research methods requirements is determined by the student's dissertation committee in consultation with the ICMS Program Director. Participation in integrative coursework across both campuses and annual seminar showcasing research, will be required of all students.

2. Other requirements (e.g. residence, comprehensive exams, thesis, dissertation, clinical or field experience, "second major," etc.).

- Participate and present research at an annual ICMS symposium
- Pass a core competency exam (CCE)
- Defend a dissertation prospectus or proposal before their committee (advance to candidacy)
- Publicly defend a dissertation
- Complete a dissertation in accordance with requisite programmatic and university requirements (See Attachment 2, page 48)
- Publication of research in peer-reviewed journals is also an expectation

For graduate programs only, please also answer the following:

3. Proportion of required program courses open only to graduate students

100 percent

4. Grades required

Students will need to maintain a grade point average of 3.0 (B) or better to graduate from this program. Three grades of a C or one of an F will result in dismissal from the program. However, ECU and UNCW use different grading systems. At ECU, students are assessed as follows:

1. A (Excellent)
2. AU (Audit)
3. B (Good)
4. C (Passed)
5. F (Failure)
6. I (Incomplete)
7. NR (Not reported by faculty)
8. S (Satisfactory progress)
9. U (Unsatisfactory progress)
10. W (Withdrawn)

At UNCW, (+) or minus (-) grades may be awarded at the discretion of the faculty and the following QP point system is used:

Grade Point	
A 4.00 qp	Excellence
A- 3.67 qp	
B+ 3.33 qp	
B 3.00 qp	Completely satisfactory
B- 2.67 qp	
C+ 2.33 qp	
C 2.00 qp	Minimally acceptable
F 0 qp	Failure
I/F 0 qp	Failure
P/F	Pass/Fail
S	Satisfactory progress (thesis)
U	Unsatisfactory progress (thesis)
I/U	Unsatisfactory progress (thesis)
I	Work incomplete
W	Withdraw passing

The Implementation Plan contained in Attachment 2 describes how the two campuses plan to reconcile grading and other issues related to coordinating academic records (see page 44).

5. Amount of transfer credit accepted

The maximum amount of credit a Ph.D. student may count toward a doctorate from a master's degree is typically 18 SCH. The exact number of hours will be determined by the Director of the ICMS program and each student's committee. This applies whether the master's degree was earned at ECU, UNCW, or elsewhere. Six of the 18 post-master's credit hours may be transferred from another regionally accredited institution. Exceptions to these policies may be granted with permission of the Joint Faculty Advising Committee, and the program coordinators and graduate deans from both universities, by petition from the student and his/her dissertation committee. Grades earned on transfer coursework must be the equivalent of "B" or better and must be approved by the graduate coordinator.

6. Language and/or research requirements

A score of at least 550 on the paper test or 79 on the internet-based Test of English as a Foreign Language (TOEFL) or a minimum score on the International English Language Testing System (IELTS) of 6.5 or 7.0 to be eligible for a teaching assistantship.

7. Any time limits for completion

A full-time student admitted with a master's degree will have six calendar years (PhD) to complete the degree program. The period begins with the student's first term of work after formal admission to a degree-granting program. Courses completed as a non-degree student will be counted towards the six-year period for completing a degree program. Full-time students will have two calendar years to achieve doctoral candidacy in the program. Exceptions to these requirements will require the approval of the program director and the graduate school.

D. For all programs, list existing courses by title and number and indicate (*) those that are required. Include an explanation of numbering system. List (under a heading marked "new") and describe new courses proposed.

Given the interdisciplinary nature of this program, students will take PhD level courses to satisfy the degree requirements associated with the Foundations and Interdisciplinary core areas, as well as their primary area of concentration. However, students may use existing master's level coursework to satisfy some of the requirements associated with the degree.

At ECU, courses designated as 5000 level generally equate to master level coursework. Courses designated at the 7000 level are generally designated as PhD level courses. Qualified master's students may enroll in 7000-level courses if they have completed the stated prerequisite(s) or with the written permission of the instructor, chairperson of the department, director of the school, or dean of the college in which the course is offered. At UNCW, courses designated at the 500 level are generally for a master's degree program, whereas courses at the 600 level are generally designated as PhD level courses. The Implementation Plan contained in Attachment 2 (page 44) describes how these inconsistencies will be managed and reconciled to maintain a consistent set of student records.

New Required Courses at ECU and UNCW

- ICMS 7001. Coastal and Marine Science 1: Coastal Physical and Geological Sciences (4 SCH) (required for students without an M.S. in coastal and marine science)
Currently GEOL 7002 – Coastal Geoscience (3 SCH), GEOL 7003 – Coastal Geoscience Laboratory (1 SCH)
- ICMS 7002. Coastal and Marine Science 2: Coastal Ecological and Chemical Sciences (4 SCH) (required for students without an M.S. in coastal and marine science). Currently BIOL 7005. Coastal Ecological Processes (4 SCH)
- ICMS 7003. Interdisciplinary Research Seminar I (3 SCH)
- ICMS 7004. Interdisciplinary Research Seminar II (3 SCH)
- ICMS 7005. Human Dimensions of Coastal Resource Management I (3 SCH)
Currently CRM 7005. Human Dimensions of Coastal Resource Management (3 SCH)
- ICMS 7006. Human Dimensions of Coastal Resource Management II (3 SCH)
Currently CRM 7007. Research Design in Marine and Coastal Studies (3 SCH)

Request to Establish the ECU & UNCW PhD in Integrative Coastal and Marine Sciences (ICMS)
Document updated 9/2/17

- ICMS 7007. Coastal Economics and Policy I (3 SCH). Currently ECON 7010. Coastal Economics and Policy (3 SCH)
- ICMS 7008. Coastal Economics and Policy II (3 SCH). Currently ECON 8540. Environmental and Resource Economics (3 SCH)
- ICMS 7009. Foundations of Coastal Human Health I (3 SCH)
- ICMS 7010. Foundations of Coastal Human Health II (3 SCH)

East Carolina University (ECU) – Existing Courses

Existing Courses for the Natural Sciences

- BIOL 5150. Herpetology
- BIOL 5230. Biology of Algae
- BIOL 5260. Microbial Ecology
- BIOL 5270. Marine Community Ecology
- BIOL 5550. Ichthyology
- BIOL 5950 Taxonomy of Vascular plants
- BIOL 5600. Fisheries Techniques
- BIOL5680. Current Topics in Coastal Biology
- BIOL 6770. Ornithology
- BIOL 6800. Population Ecology
- BIOL 6820. Systems Ecology
- BIOL 6850. Advances in Ecology, I
- BIOL 6860. Advances in Ecology, II
- BIOL 7010. Estuarine Ecology
- BIOL 7020. Marine Biology
- BIOL 7200 Invertebrate Biology
- BIOL 7300 Landscape Ecology
- BIOL 7310. Ecological Modeling and Simulation
- BIOL 7320. Ecological Dimensions of Coastal Management
- BIOL 7330. Ecosystems of Coastal Cities
- BIOL 7360. Fisheries Management
- BIOL 7400. Wetland Ecology and Management
- BIOL 7630. Fish Physiology
- BIOL 7900. Ecological Statistics
- BIOL 7920. Conservation Biology
- GEOG 6150. Quantitative Methods in Geography
- GEOG 6220. Advanced Coastal Geomorphology
- GEOG 6410. Advanced Cartography
- GEOG 6420. Advanced Remote Sensing
- GEOG 6430. Advanced Geographic Information Systems
- GEOG 6440. Spatial Analysis of Coastal Environments
- GEOG 6460. Advanced Digital Terrain Analysis
- GEOG 6510. Meteorological Measurement Systems
- GEOG 6540. Advanced Coastal Storms
- GEOG 6590. Advanced Tropical Meteorology
- GEOL 5000. Geomorphology
- GEOL 5001. Geomorphology Lab
- GEOL 5150. The Geological Component of Environmental Science
- GEOL 5300. Geology of Coastal Processes and Environments
- GEOL5350. Marine Geology
- GEOL 5450. Aqueous Geochemistry

- GEOL 5710. Groundwater Hydrology
- GEOL 6250. Stratigraphic Analysis
- GEOL 6300. Sedimentary Environments
- GEOL 6301. Sedimentary Environments Lab
- GEOL 6310. Principles of Paleoecology
- GEOL 6311. Principles of Paleoecology Lab
- GEOL 6340. Micropaleontology
- GEOL 6342. Micropaleontology Lab
- GEOL 6350. Environmental and Global Change
- GEOL 6400. Geochemistry
- GEOL 6950. Geological Data Analysis
- GEOL 7002. Coastal and Marine Geology
- GEOL 7003. Coastal and Marine Geology lab
- GEOL 7500. Marine Isotope Geochemistry
- GEOL 7600. Remote Sensing of Coastal Environments
- GEOL 7710. Groundwater Modeling
- GEOL 7930. Principles of Biogeochemical Interactions
- GEOL 7910. Sediment Transport and Depositional Processes
- GEOL 7920. Advanced Surface Water/Groundwater Hydrology

Existing Courses for the Social Sciences

- ANTH 6104. Research Design
- ECON 5910. Health Economics
- ECON 7010. Coastal and Marine Economics and Policy
- ECON 8540. Environmental and Resource Economics
- ECON 8350. Applied Research Methods
- ECON 5360. Mathematical Economics
- ECON 6300. Coastal Populations
- ECON 6301. Econometrics I
- ECON 6302. Econometrics II
- ECON 6401. Microeconomic Theory I
- ECON 6402. Microeconomic Theory II
- ECON 8111. Microeconomic Theory I
- ECON 8310. Econometrics
- ECON 8411. Risk Analysis I
- ECON 8510. Applied Welfare Analysis
- GEOG/PLAN 6250. Advanced Environmental Impact Analysis
- GEOG/PLAN 6270. Advanced Water Resources Management and Planning
- OMGT 6123. Quantitative Methods
- HIST 5505. Maritime History of the Western World to 1415
- HIST 5520. Maritime History of the Western World Since 1815
- HIST 6010. Maritime History of the Atlantic World, 1415-1815
- HIST 6525. Sea Power, 480 BC to the Present
- HIST 6805. History and Theory of Nautical Archaeology
- PLAN 6015. Hazards and Emergency/Disaster Planning
- SOCI 6312. Multivariate Techniques and Analysis
- PLAN 6055. Coastal Planning and Policy

Existing courses for the Health Sciences

- PHAR 7680. General Toxicology
- PHAR 7682. Advanced Toxicology
- PHAR 7777. Practical Problems in Biometry
- HLTH/MPH 6011. Introduction to Epidemiology
- BIOS 7021. Biostatistics for Health Professionals I
- EHST 5010/5011. Principles of Toxicology/Laboratory
- EHST/MPH 6010. Fundamentals of Environmental Health

University of North Carolina Wilmington (UNCW)

Existing Courses for the Natural Sciences

- BIO 515. Introductory Biostatistics
- BIO 560. Estuarine Biology
- BIO 561. Barrier Island Ecology
- BIO 564. Biological Oceanography
- BIO 564L. Biological Oceanography Lab
- BIO 568. River Ecology
- BIO 601. Oceanography and Environmental Science (Topics and Methods)
- BIO 602. Ecology (Topics and Methods in Marine Ecology)
- BIO 605. Evolution and Diversity (Topics and Methods in Evo and Diversity of marine organisms)
- BIO 690. Seminar
- CHM 512. Mass Spectrometry and Nuclear Magnetic Resonance Spectroscopy
- CHML 512. Mass Spectrometry and Nuclear Magnetic Resonance Spectroscopy Lab
- CHM 517. Medicinal Chemistry
- CHM 525. Computational Chemistry
- CHM 536. Advanced Analytical Chemistry
- CHM 567. Biochemical Techniques and Instrumentation
- CHM 574. Aquatic Chemistry
- CHM 575. Chemical Oceanography
- CHM 576. Chemical and Physical Analysis of Seawater
- CHM 579. Role of the Oceans in Human Health
- CHM 586. Fundamentals of Heterocycles with Emphasis on Pharmaceuticals
- CHM 591. Directed Independent Study
- CHM 592. Special Topics in Chemistry
- EVS 520. Foundations of Coastal Management
- EVS 530. Tropical Environmental Ecology
- EVS 540. Foundations of Environmental Conservation and Management
- EVS 541. Terrestrial Wildlife Field Methods
- EVS 554. Remote Sensing for Environmental Management
- EVS 555. Geospatial Analysis for Coastal Management
- EVS 564. Natural Resource Policy
- EVS 570. Advanced Environmental Law and Policy
- EVS 572. Coastal Protected Areas Management
- GGY 520. Fundamentals of Geographic Information Systems
- GGY 522. Remote Sensing in Environmental Analysis
- GGY 524. Advanced Geographic Information Systems
- GGY 526. Environmental Geographic Information Systems

- GGY 528. Advanced Remote Sensing
- GGY 535. Environmental Geography
- GGY 575. Water Resources: Science and Policy
- GLY 520. Global Climate Change
- GLY 521. Seminar in Paleoceanography
- GLY 543. Tectonics
- GLY 545. Sedimentary Basin Analysis
- GLY 550. Marine Geology
- GLY 551. Seafloor Mapping
- GLY 552. Coastal Sedimentary Environments
- GLY 555. Coastal Sediment Dynamics
- GLY 558. Introduction to Coastal Management
- GLY 560. Advanced Stratigraphy
- GLY 561. Coastal Plains Geology
- GLY 565. Introduction to Geophysics
- GLY 572. Introduction to Geochemistry
- GLY 573. Isotope Geochemistry
- MAT 518. Applied Analytical Methods 1
- MAT 525. Numerical Analysis
- MAT 563. Ordinary Differential Equations
- MAT 564. Applied Analytical Models
- MAT 565. Applied Probability
- MSC 525. Physical Oceanography
- MSC 526. Cruise or Field Sampling
- MSC 550. Marine Geology
- MSC 564. Biological Oceanography
- MSC 569. Advanced Oceanography
- MSC 575. Chemical Oceanography
- MSC 579. Role of the Oceans in Human Health
- MSC 592. Special Topics Marine Science
- PHY 550. Fluid Mechanics
- PHY 575. Physical Oceanography
- PHY 576. Chemical and Physical Analysis of Seawater
- PHY 577. Observational Methods and Data Analysis in Physical Oceanography
- PHY 578. Geophysical Fluid Dynamics
- PHY 579. Ocean Circulation Systems
- PHY 580. Coastal and Estuarine Systems
- STT 512. Applied Regression and Correlation
- STT 520. Biostatistical Analysis
- STT 535. Applied Multivariate Analysis
- STT 525. Categorical Data Analysis
- STT 592. Statistical Programming and Data Management

Existing Courses for the Social Sciences

- ECN 525. Environmental Economics
- ECN 530. Natural Resource Economics
- MCOP 511. Coastal and Ocean Law
- MCOP 512. Marine Resource Law
- MCOP 520. Coastal and Environmental Science and Policy
- MCOP 524. Coastal Resources Management
- MCOP 521. Institutions and the Environment

- MCOP 525. Coastal Ecosystem Governance
- MCOP 531. Fisheries Law & Management
- MCOP 540. Interdisciplinary Field Seminar in Coastal and Ocean Policy
- MCOP 592. Special Topics in Coastal and Ocean Policy
- MCOP 593. Seminar in Coastal and Ocean Policy
- PLS 505. Policy Analysis
- PLS 506. Program Evaluation
- PLS 520. Seminar in Coastal Processes and Problems
- PLS 521. Foundations of Coastal and Environmental Management
- PLS 522. Field Seminar in Coastal Management
- PLS 523. Coastal Land Use Planning
- PLS 524. Managing Coastal Hazards
- PLS 525. Managing Coastal Ecosystems
- PLS 541. Applied Public Economics
- PLS 542. Public Economics and Cost-Benefit Analysis
- PLS 543. Environmental Policy Analysis
- PLS 544. Resource Economics
- PLS 545. Government Planning and Geographic Information Systems
- PLS 548. Energy Policy
- PLS 562. International Environmental Policy

Existing Courses for the Health Sciences

Students will complete their health sciences coursework primarily on the ECU campus until PhD level health sciences courses become available at UNCW.

II. Faculty

- A. (For undergraduate and master's programs) List the names, ranks and home department of faculty members who will be directly involved in the proposed program. The official roster forms approved by SACSCOC may be submitted. For master's programs, state or attach the criteria that faculty must meet in order to be eligible to teach graduate level courses at your institution.**

Not applicable

- B. (For doctoral programs) List the names, ranks, and home department of each faculty member who will be directly involved in the proposed program. The official roster forms approved by SACSCOC may be submitted. Provide complete information on each faculty member's education, teaching and research experience, research funding, publications, and experience directing student research including the number of theses and dissertations directed.**

ECU expects approximately 50 faculty across a variety of departments to be involved in some fashion in the PhD in ICMS. UNCW expects approximately 65 faculty to be involved in delivering different aspects of the PhD in ICMS. A URL link to two-page vitae of the following faculty are contained in Attachment 3 (page 50):

Table 1A. ECU faculty involved in Proposed ICMS Joint PhD degree - Name, Rank, and Home Department.

ECU Faculty Name	Rank (Assistant Professor, Associate Professor, or Full Professor)	Home Department¹
Asch, Rebecca	Assistant	BIOL
Bee, Beth	Assistant	GEOG
Bin, Okmyung	Full	ECON
Blakeslee, April	Assistant	BIOL
Chalcraft, David R.	Full	BIOL
Christian, Robert	Full	BIOL
Collier, David	Full	BSOM
Corbett, David R.	Full	GEOL
Culver, Steve	Full	GEOL
Curtis, Scott	Full	GEOG
Daniel, Randy	Full	ANTH
DeWitt, Jamie	Associate	BSOM
Edwards, Robert	Full	HIST
Ericson, Richard	Full	ECON
Etheridge, James Randall	Assistant	ENG
Ewen, Charles	Full	ANTH
Ferreira, Rosana	Full	GEOG
Field, Erin	Assistant	BIOL
Gares, Paul	Full	GEOG
Gittman, Rachel	Assistant	BIOL
Grace-McCaskey, Cynthia	Assistant	ANTH
Griffith, David C.	Full	ANTH
Harris, Brenda L.	Associate	HIST
Hochard, Jacob	Assistant	ECON
Howard, Greg	Assistant	ECON
Humphrey, Charlie	Associate	HEP
Kearney, Greg	Associate	BSOM
Keeler, Andrew G.	Full	ECON
Kruse, Jamie L.	Full	ECON
Lee, Jonathan	Assistant	ECON
Leorri Soriano, Eduardo	Associate	GEOL
Loomis, David K.	Full	RCLS
Luczkovich, Joseph J.	Full	BIOL
Mallinson, David	Full	GEOL
Manda, Alex K.	Associate	GEOL
McKinnon, Jeffrey	Full	BIOL
McKinnon, Jennifer	Assistant	HIST

Miller, Richard	Full	GEOL
Mitra, Siddhartha	Associate	GEOL
Montz, Burrell	Full	GEOG
O'Driscoll, Michael A.	Associate	GEOL
Peralta, Ariane Legaspi	Assistant	BIOL
Reyes, Enrique	Full	BIOL
Richards, Nathan T.	Associate	HIST
Rickenbach, Tom	Associate	GEOG
Rulifson, Roger A.	Full	BIOL
Sprague, Mark	Full	PHYS
Spruill, Richard	Associate	GEOL
Su, Hong-Bing	Associate	GEOG
Vogelsong, Hans G.	Associate	RCLS
Walsh, John P.	Full	GEOL

¹ANTH-Anthropology, BIOL-Biology, BSOM – Brody School of Medicine, ECON-Economics, ENG-Engineering, HIST – History, HEP – Health Education and Promotion, PHYS – Physics, RCLS – Recreation and Leisure Studies.

Table 1B. UNCW faculty involved in Proposed ICMS Joint PhD degree - Name, Rank, and Home Department.

UNCW Faculty Name	Rank (Assistant Professor, Associate Professor, or Full Professor)	Home Department ¹
Avery, Brooks	Full	CHM
Baden, Daniel	Full	BMB and CHM
Biddle, Jennifer	Assistant	PIA
Bingham, Fred	Full	PPO
Borrett, Stuart	Associate	BMB
Bourdelaïs, Andrea	Research Associate	MARBIONC
Brander, Suzanne	Assistant	BMB
Cahoon, Larry	Full	BMB
Covi, Joe	Assistant	BMB
Danner, Ray	Assistant	BMB
Dumas, Chris	Full	ECN
Durako, Mike	Full	BMB
Emslie, Steve	Full	BMB
Erwin, Patrick	Assistant	BMB
Eulie, Devon	Assistant	EVS
Finelli, Chris	Full	BMB
Frampton, Art	Associate	BMB
Freshwater, Wilson	Research Associate	CMS
Gamble, Doug	Full	EOS
Hall, Jack	Full	EVS
Halls, Joanne	Associate	EOS

Request to Establish the ECU & UNCW PhD in Integrative Coastal and Marine Sciences (ICMS)
Document updated 9/2/17

Hancock, Robert	Full	CHM
Hao, Huili	Assistant	EVS
Hawkes, Andrea	Assistant	EOS
Hill, Jeff	Full	EVS
Hoffmann, Sharon	Assistant	EOS
Imperial, Mark	Associate	PIA
Keiber, Robert	Full	CHM
Kinsey, Steve	Full	BMB
Koopman, Heather	Full	BMB
LaMaskin, Todd	Assistant	EOS
Lammers, Mark	Full	MAT
Lane, Chad	Associate	EOS
Le Pabic, Pierre	Assistant	BMB
Leonard, Lynn	Full	EOS
Loh, Ai Ning	Associate	EOS
Long, Zachary	Associate	BMB
Lopez-Legentil, Susanna	Assistant	BMB
Mallin, Mike	Research Professor	CMS
McNamara, Dylan	Associate	PPO
Mead, Ralph	Full	CHM
Morrison, John	Full	PPO
Nooner, Scott	Associate	EOS
Pabst, Ann	Full	BMB
Pawlik, Joe	Full	BMB
Posey, Martin	Full	BMB
Pricope, Narcisa	Assistant	EOS
Rotenburg, Jamie	Associate	EVS
Scharf, Fred	Full	BMB
Schuhmann, Peter	Full	ECN
Shew, Roger	Lecturer	EOS
Skrabal, Steve	Full	CHM
Snider, Antony	Associate	EVS
Taylor, Alison	Full	BMB
Urbanek, Rachel	Assistant	EVS
Volety, Aswani	Full	BMB and Dean CAS
Wang, Yin	Assistant	CHM
Watanabe, Wade	Research Professor	CMS
Weinkle, Jessica	Assistant	PIA
White, Will	Associate	BMB
Wilbur, Ami	Associate	BMB
Willey, Joan	Full	CHM
Williard, Amanda	Full	BMB

Wright, Jeff	Full	CHM
Yopak, Kara	Assistant	BMB

¹BMB - Biology and Marine Biology, CHM - Chemistry and Biochemistry, CMS - Center for Marine Science, ECN - Economics and Finance, EOS - Earth and Ocean Science, EVS - Environmental Sciences, MARBIONC - Marine Biotechnology NC, MAT - Mathematics and Statistics, PIA - Public and International Affairs, PPO - Physics and Physical Oceanography

C. Estimate the need for new faculty for the proposed program over the first four years. If the teaching responsibilities for the proposed program will be absorbed in part or in whole by the present faculty, explain how this will be done without weakening existing programs.

There is no need for additional faculty at ECU. The implementation of this PhD program will coincide with phasing out the current PhD in Coastal Resource Management. The CRM's faculty resources will then be reallocated in support of the new ICMS degree program.

UNCW will require 3 additional faculty lines, a teaching post-doc, a floating post doc, 16 new graduate teaching assistant positions, program director stipend and release time, as well as 16 in-state tuition scholarships and 6 out-of-state remissions. The additional faculty lines and post-doc positions at UNCW are needed to help offset the reduced instruction that will occur as existing faculty have workloads adjusted based on their participation in the proposed Joint PhD program. These additional faculty lines will also help to compensate departments for the lost classroom instruction resulting from the classes needed to serve students in the Joint PhD in ICMS.

D. Explain how the program will affect faculty activity, including course load, public service activity, and scholarly research.

The implementation of this PhD program will replace the current PhD in Coastal Resources Management. At the time of implementation, existing CRM students will have the option to complete their CRM course of study or transfer to the ICMS Degree. As a result, there is no expected impact on faculty activity at ECU. Most of the faculty's efforts in support of the CRM will simply be reallocated in support of the new ICMS degree program. However, there will be a teach-out plan developed by December 7, 2017, to meet SACSCOC reporting guidelines. Within three years, the CRM phase-out will be complete.

The proposed program will have a bigger impact on faculty activity at UNCW. Teaching loads will require adjustment for many of the UNCW faculty that are actively involved in the delivery of the Joint PhD in ICMS.

III. Delivery Considerations. Provide assurances of the following (not to exceed 250 words per lettered item):

A. Access (online, site-based distance education, and off-campus programs). Students have access to academic support services comparable to services provided to on-campus students and appropriate to support the program, including admissions, financial aid, academic advising, delivery of course materials, and placement and counseling.

Students taking courses remotely will use either ECU or UNCW's existing internet-based processes that support all students, both DE and campus. Both campuses have made a commitment to providing online interfaces for services that all students can access any time.

- B. Curriculum delivery (online and site-based distance education only). The distance education technology to be used is appropriate to the nature and objectives of the program. The content, methods and technology for each online course provide for adequate interaction between instructor and students and among students.**

For purposes of delivering curricula across two campuses as needed for this Joint PhD, students and instructors may use Blackboard, which is often used to manage learning materials and deliver course content. In addition to features in Blackboard, such as chat, blog, journal, quiz, exams, assignments, and notes, faculty and students may use additional third-party tools (e.g. Saba meeting, virtual computing lab, Lynda.com, Mediasite recording, Camtasia). Faculty members can deliver course content in hybrid synchronous and asynchronous modes to fit the need of the students.

- C. Faculty development (online and site-based distance education only). Faculty engaged in program delivery receive training appropriate to the distance education technologies and techniques used.**

All faculty members on both campuses who are teaching ICMS courses online will be required to complete an initial five-module online-teaching workshop to be qualified to teach online. Each year thereafter, faculty members who teach online must complete annual training modules to be current with the technology and pedagogy. Ample workshops and training opportunities for faculty are available on both campuses. The faculty who teach online have their courses evaluated every three years to ensure the quality of the course delivery.

- D. Security (online and site-based distance education only). The institution authenticates and verifies the identity of students and their work to assure academic honesty/integrity. The institution assures the security of personal/private information of students enrolled in online courses.**

Secure web-based authentication is mandatory to access ECU and UNCW's internet services available to students and faculty. All students and faculty are required to use their campus user name and password to log into Blackboard to verify their identities. Faculty members have adopted a wide range of tools and approaches to ensure the integrity of the online courses including:

1. Using UNC proctoring services to ensure integrity of the classes.
2. Using software tools such as Lockdown browser to limit students' access to supporting materials and extra resources during exams.
3. Educating students about the academic integrity and the punitive consequences if academic integrity is violated.
4. Including a standardized academic integrity statement in the syllabi.

ECU and UNCW's Computing Services have state-of-the-art infrastructure to protect the privacy and confidentiality of student's information.

IV. Library

A. Provide a statement as to the adequacy of present library holdings for the proposed program to support the instructional and research needs of this program.

No additional library resources will be needed on either campus, as both campuses have adequate journals and other literature needed for their existing coastal and marine science master's programs. Students and faculty will have access to the library materials on both campuses, and some of these holdings are expected to be complementary.

B. If applicable, state how the library will be improved to meet new program requirements for the next four years. The explanation should discuss the need for books, periodicals, reference material, primary source material, etc. What additional library support must be added to areas supporting the proposed program?

Not applicable

C. Discuss the use of other institutional libraries.

Students in the ICMS program will have ID cards for both campuses which will also grant access to materials in libraries on both campuses.

V. Facilities and Equipment

A. Describe facilities available for the proposed program.

ECU has equipment and facilities related to drilling wells in the coastal plain (Geoprobe), ecosystem research (Li-COR gas analyzers, fisheries equipment), an SV2 Waveglider, optical luminescence age-dating capability of Quaternary age soils and sediments, a dedicated Weather Research and Forecasting (WRF) computing lab, hi volume aerosol samplers, 6 ft dia automated rain collector, scanning electron microscopy facilities, and optical luminescence geological dating. The UNC Coastal Studies Institute (UNC-CSI) includes a wave tank, several small (<40 ft) vessels able to traverse NC's sounds and one recently acquired seaworthy (42 ft) vessel.

UNCW has a coastline and a strong infrastructure for students, including seaworthy vessels, a state-of-the art centralized analytical chemistry facility including solid state NMR, hi resolution mass spectrometry (stable isotopic ratio), a flow through aquaculture facility. Students and committees will have access to facilities on both campuses. See Appendix A for a detailed discussion of the wide range of facilities and resources available to support faculty and students in the Joint PhD in ICMS.

B. Describe the effect of this new program on existing facilities and indicate whether they will be adequate, both at the commencement of the program and during the next decade.

The proposed Joint PhD in ICMS builds upon the complementary nature of the world class faculty, facilities, and university resources on both campuses, to train a new generation of interdisciplinary scientists, health professionals, and policy analysts with the ability to address the complex problems facing coastal and marine ecosystems. The program will require students to work across disciplines, allow students to utilize the facilities at ECU, UNCW, and UNC-CSI, and work with faculty across disciplines and campuses to address interdisciplinary

research problems. Similarly, the program is designed to encourage new research collaborations between ECU, UNCW and UNC-CSI, as well as internally across departments, programs, and research centers that will allow researchers to pursue new extramural funding opportunities. Therefore, the implementation of the ICMS degree program will have a positive impact on the coastal, marine, and health related facilities on all three campuses. See Appendix A for a detailed discussion of the facilities and their relationship to the ICMS degree program.

C. Describe information technology and services available for the proposed program.

The information technology and services available at ECU, UNCW and UNC-CSI to faculty, students, and administrators are summarized in the Implementation Plan contained in Attachment 2 (see page 46).

D. Describe the effect of this new program on existing information technology and services and indicate whether they will be adequate, both at the commencement of the program and during the next decade.

The information technology and services at ECU, UNCW and UNC-CSI are adequate to begin implementation of the ICMS PhD degree program. The implementation of the ICMS degree program is not expected to impact information technology and services at any of the three locations during the next decade. This issue is discussed in further detail in the Implementation Plan contained in Attachment 2 (page 46).

VI. Administration

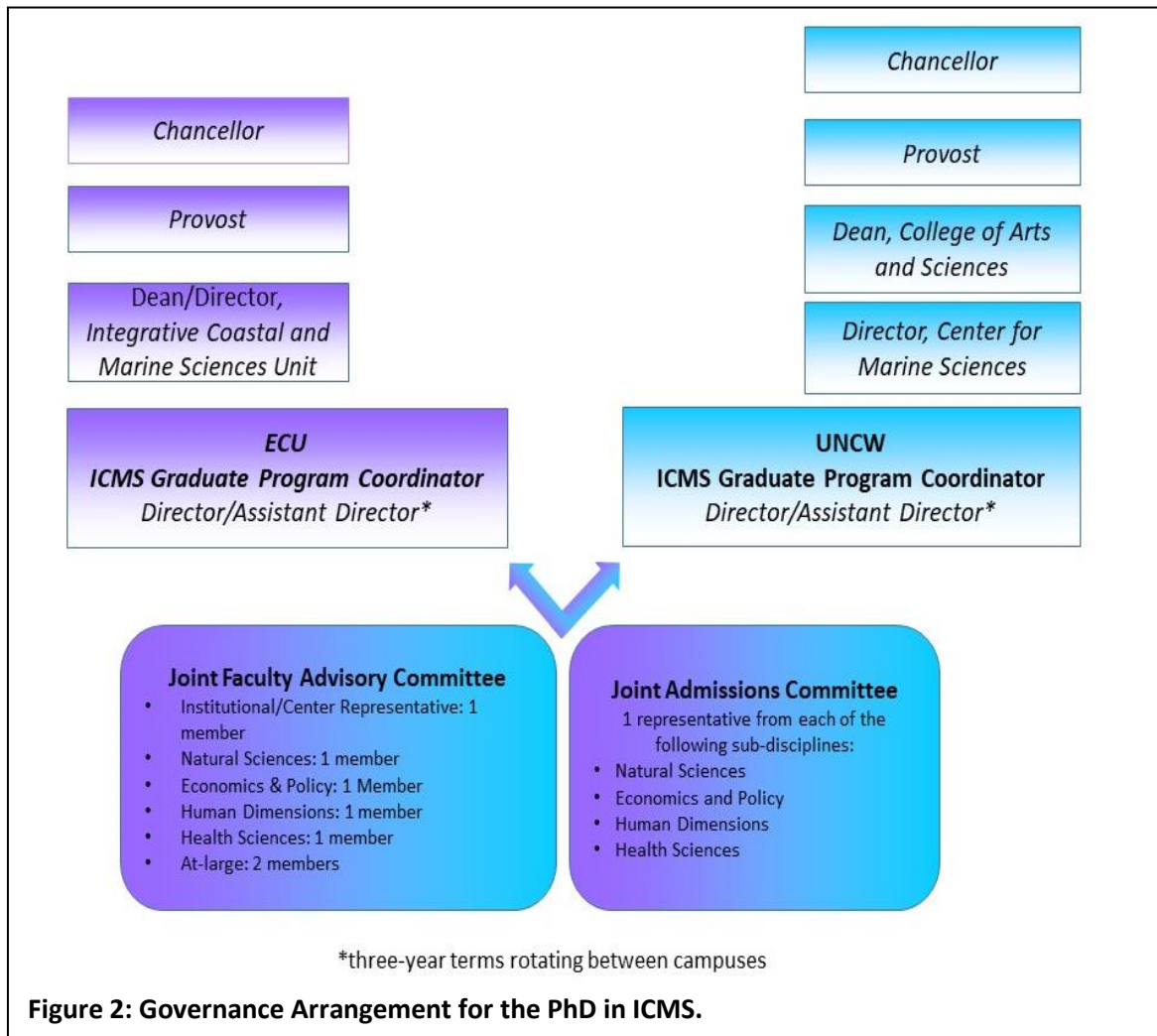
A. Describe how the proposed program will be administered, giving the responsibilities of each department, division, school, or college. Explain any inter-departmental or inter-unit administrative plans. Include an organizational chart showing the "location" of the proposed new program.

The program will be administered jointly by both campuses. This administrative arrangement is described in greater detail in the Implementation Plan contained in Attachment 2 (page 37) in the text below, and in Figure 2 (see next page). Each campus will have a graduate program coordinator. Working closely together, these individuals will update and revise documents (e.g. student manuals) and curriculum associated with the program, oversee student recruitment, advocate for student funding, make decisions regarding student funding, regularly evaluate student progress with their faculty advisors, encourage faculty advisors to seek funding for students, and act as liaisons between the program and the graduate schools of both universities. The graduate coordinators will serve three-year terms with the possibility of renewal for a second three-year term. The terms will be staggered so that each new coordinator will work with one with more experience. One coordinator will serve as the director of the Joint PhD in ICMS. The other will have the title of assistant director. The director will serve as the central point of contact for admissions inquiries, chair the admissions committee, chair the faculty advisory committee, coordinate program development activities, represent or respond to queries on behalf of the program, and coordinate assessment activities.

Faculty Advisory Committee

The graduate coordinators on both campuses will establish a 14-member faculty advisory committee (FAC) consisting of 7 members from each campus with the following composition:

- Institutional/center representative (ex officio members) (1 each campus)
- Natural sciences representative (1 each campus)
- Economics and Policy representative (1 each campus)
- Human Dimensions representative (1 each campus)
- Health sciences representative (1 each campus)
- At-large member (2 each campus)



The FAC will provide the overall governance for the Joint PhD in ICMS. The members of the FAC will consist of faculty who have been actively conducting research, teaching and/or mentoring students in the program. The FAC will review and approve curriculum changes, oversee program assessment activities (e.g., SACSCOC), coordinate activities in support of the ICMS program on both campuses, and help identify current and future opportunities for faculty, students, and research units on both campuses to work together in innovative ways that advance the mission of the ICMS program. The FAC is expected to meet approximately four times a year using virtual classroom technology.

B. For joint programs only, include documentation that, at minimum, the fundamental elements of the following institutional processes have been agreed to by the partners:

Attachment 2 (beginning on page 37) contains a detailed Implementation Plan that describes the fundamental aspects of different institutional processes and how both campuses plan to coordinate the delivery of the Joint PhD in ICMS across both campuses.

1. Admission process

The ICMS admissions process is designed to ensure a fair and unbiased evaluation of all student applications by both campuses. Applications will be evaluated on the demonstrated capabilities of the prospective student, the fit between the applicant and the faculty within the ICMS program, the potential of the applicant to succeed in the joint degree program, and the ability of the program to provide funding for the applicant.

Review of applications to the program will begin on January 15th of every year. Completed applications for admission will be reviewed on a rolling basis and continue until March 1st, the deadline for admissions, after which time the Joint Faculty Advisory Committee will meet to finalize acceptance/funding offers. The Director of the ICMS program will pass along completed applications to the Joint Faculty Advisory Committee which will serve as the admissions committee. Each member of the Joint Faculty Advisory Committee will read each application packet. These applications are to be distributed widely to ECU and UNCW faculty within the sub-discipline they represent. The committee members are to solicit responses from the faculty gauging their interest in working with the student and their ability to fund them through external awards. The members of the admissions committee will then collate those responses and use GRE and GPA scores, letters of recommendation, an example of the student's writing abilities, and the student's academic credentials, all to collectively prioritize and rank the applicants. The admissions committee may also take into account a potential faculty mentor's historical track record of funding students into the decision to accept or reject a student applicant as that faculty member's advisee. Essentially, research-active faculty members will be prioritized as potential major professors.

By March 15th, the Joint Faculty Advisory Committee will meet in person or virtually with the Director and Associate Director of the ICMS program. The Committee can then recommend to accept or reject applicants based on discussion with the Director and Associate Director. At that meeting, the Director will communicate funding availability for each campus for the upcoming year. In general, the Director will comply with the rankings made by the admissions committee. The final decision to accept or reject new applicants will be based on both the ranking and availability of academic year funding.

The Implementation Plan contained in Attachment 2 (page 40) describes other aspects of the admission process and how students will be matriculated on both campuses such that they have equal access to the resources on both campuses.

2. Registration and enrollment process for students

The Implementation Plan contained in Attachment 2 describes how the registration and enrollment processes will be coordinated across both campuses (see page 43).

3. Committee process for graduate students

Each student will select a primary course of study within one of the joint program's four concentrations: *Natural Sciences, Economics and Policy, Human Dimensions, Health Sciences*. All students will also select a secondary concentration area to ensure the degree emphasizes two areas spread across the natural, economic, human dimension, and health sciences. Similarly, the research embodied in the resulting dissertation will be interdisciplinary in nature to expand the student's marketability beyond a single traditional academic discipline and demonstrate the student's ability to perform research utilized by governmental and nongovernmental organizations.

Each student is also responsible for identifying a major advisor, a co-advisor, and forming a five-member PhD committee (total) that will review and approve the student's course of study. The student's PhD committee shall be chaired by the major advisor from the primary concentration area and co-chaired by the member from the secondary concentration; and three additional members qualified to provide technical guidance in the dissertation research. The committee's membership must also include at least one faculty member from the second campus.

4. Plan for charging and distributing tuition and fees

This is described in the Implementation Plan contained in page 45 of Attachment 2.

5. Management of transcripts and permanent records

This is described in the Implementation Plan contained in page 40 of Attachment 2.

6. Participation in graduation

This is described in the Implementation Plan contained in page 47 of Attachment 2.

7. Design of diploma

This is described in the Implementation Plan contained in page 47 of Attachment 2.

VII. Accreditation and Licensure

- A. Where appropriate, describe how all licensure or professional accreditation standards will be met, including required practica, internships, and supervised clinical experiences.**

Not applicable

- B. Indicate the names of all accrediting agencies normally concerned with programs similar to the one proposed. Describe plans to request professional accreditation.**

Not applicable

- C. If the new degree program meets the SACSCOC definition for a substantive change, what campus actions need to be completed by what date in order to ensure that the substantive change is reported to SACSCOC on time?**

The proposed degree program involves a collaborative academic arrangement that will result in the award of a Joint PhD degree between ECU and UNCW, a Procedure 2 substantive change requiring SACSCOC notification prior to implementation. SACSCOC will be notified of the prospective joint degree program by the end of calendar year 2017.

D. If recipients of the proposed degree will require licensure to practice, explain how program curricula and title are aligned with requirements to “sit” for the licensure exam.

Not applicable.

VIII. Supporting Fields. Discuss the number and quality of lower-level and cognate programs for supporting the proposed degree program. Are other subject-matter fields at the proposing institution necessary or valuable in support of the proposed program? Is there needed improvement or expansion of these fields? To what extent will such improvement or expansion be necessary for the proposed program?

There are a number of undergraduate and master degree programs at ECU and UNCW in a wide range of academic disciplines that will provide support to the PhD in ICMS. These programs are described in detail in the Appendix A document.

IX. Additional Information. Include any additional information deemed pertinent to the review of this new degree program proposal.

None.

X. Budget

- A. Complete and insert the Excel budget template provided showing incremental continuing and one-time costs required each year of the first four years of the program. Supplement the template with a budget narrative for each year.**

UNC Budget Worksheets for ECU, Years 1 through 4 are provided below.

ECU Budget narrative: Currently the equivalent of about 9 FTE faculty contribute to the existing interdisciplinary CRM PhD program at ECU with pro-rated salaries summing to \$817,755. A current list of ECU faculty and their time and effort attributed to the CRM PhD program was used to arrive at this sum. The prior year's expenditures for graduate assistantships at ECU was \$482,000 from all sources including grants and contracts. Funds budgeted for the CRM program will be transferred to the new ICMS PhD program. Grant revenue attributed to this program was about \$1,700,000 in the most recent year, and is projected to increase by at least 5% to 6% per year with the new ICMS program. Based on the UNC funding matrix, tuition revenue less tuition remissions at current enrollment levels in the ECU CRM PhD program is about \$213,588 per year. In year 1, revenue from grants and tuition (\$1,913,588) is expected to exceed faculty salaries and graduate assistantship budgets (\$1,712,640). Similar trends are expected in years 2 to 4.

ECU tuition support assumes current CRM support continues at historical trends (Avg. of about 16 FTE in-state tuition remissions with health insurance plus 3 out-of-state tuition remissions). Historical trends show about 35% of tuition and health insurance is covered from grants and contracts, included in the above total. Not every student is full-time and receives this support. Campus-based budget plans in subsequent years include 3% inflation per year.

UNC Budget Worksheets for UNCW (forthcoming)

UNCW Budget narrative: UNCW will require 3 additional faculty lines, a teaching post-doc, a floating post doc, 16 new graduate teaching assistant positions, program director stipend and release time, as well as 16 in-state tuition scholarships and 6 out-of-state remissions. The additional faculty lines and post-doc positions at UNCW are needed to help offset the reduced instruction that will occur as existing faculty have workloads adjusted based on their participation in the proposed Joint PhD program. These additional faculty lines will also help to compensate departments for the lost classroom instruction resulting from the classes needed to serve students in the Joint PhD in ICMS.

Request to Establish the ECU & UNCW PhD in Integrative Coastal and Marine Sciences (ICMS)
Document updated 9/2/17

SUMMARY OF ESTIMATED ADDITIONAL COSTS FOR PROPOSED PROGRAM					
INSTITUTION	East Carolina Univeristy		DATE	1-Aug-17	
Program (CIP, Name, Level)	30.0000, Integrative Coastal and Marine Sciences (ICMS), Doctoral				
Degree(s) to be Granted	Ph.D.		Program Year	Year 1 (2019-2020)	
Differential tuition requested per student per academic yr		\$0			
Projected annual FTE students		24			
Projected annual differential tuition		\$0			
Percent differential tuition for financial aid		0%			
Differential tuition remainder		\$0			
	ADDITIONAL FUNDS REQUIRED - BY SOURCE				
	Reallocation of Present Institutional Resources	Projected Differential Tuition	Enrollment Increase Funds	Other New Allocations (Fees; Campus Tuition)	Total
EPA/SPA Regular Salaries					
Administrative Assistant (1 FTE)	\$ 40,000.00	\$ -	\$ -	\$ -	\$ 40,000.00
EPA Academic Salaries					
9.1 FTE faculty in current CRM PhD	\$ 817,755.19	\$ -	\$ -	\$ -	\$ 817,755.19
	\$ -	\$ -	\$ -	\$ -	\$ -
Social Security (7.65%)	\$ 65,618.27	\$ -	\$ -	\$ -	\$ 65,618.27
State Retirement (18%)	\$ 154,395.93	\$ -	\$ -	\$ -	\$ 154,395.93
Medical Insurance (\$5,500 per FTE)	\$ 52,800.00	\$ -	\$ -	\$ -	\$ 52,800.00
Director stipend (1)	\$ 18,500.00	\$ -	\$ -	\$ -	\$ 18,500.00
Course Releases	\$ 16,500.00	\$ -	\$ -	\$ -	\$ 16,500.00
Graduate Stipends					\$ -
Graduate Assistants (16 @ \$23K)	\$ 368,000.00	\$ -	\$ -	\$ -	\$ 368,000.00
In-state tuition (16 @ \$4749)	\$ 75,984.00	\$ -	\$ -	\$ -	\$ 75,984.00
Out-of-state remissions (3 @ \$13,149)	\$ 39,447.00	\$ -	\$ -	\$ -	\$ 39,447.00
Health Insurance (16 @ \$2540)	\$ 40,640.00				\$ 40,640.00
Supplies and Materials					\$ -
Instructional Supplies	\$ 10,000.00		\$ -	\$ -	\$ 10,000.00
Computer Software	\$ -		\$ -	\$ -	\$ -
Current Services					\$ -
(Identify)	\$ -	\$ -	\$ -	\$ -	\$ -
Travel	\$ 10,000.00	\$ -	\$ -	\$ -	\$ 10,000.00
Communications	\$ 1,000.00	\$ -	\$ -	\$ 1,000.00	\$ 2,000.00
Printing and Binding	\$ 1,000.00	\$ -	\$ -	\$ -	\$ 1,000.00
Advertising	\$ 1,000.00	\$ -	\$ -	\$ 1,000.00	\$ 2,000.00
Fixed Charges					\$ -
(Identify)	\$ -	\$ -	\$ -	\$ -	\$ -
Capital Outlay (Equipment)					
New Faculty Start Up Equipment	\$ -	\$ -	\$ -	\$ -	
					\$ -
Libraries	\$ -	\$ -	\$ -	\$ -	
TOTAL ADDITIONAL COSTS	\$ 1,712,640.40	\$ -	\$ -	\$ 2,000.00	\$ 1,714,640.40

Request to Establish the ECU & UNCW PhD in Integrative Coastal and Marine Sciences (ICMS)
Document updated 9/2/17

SUMMARY OF ESTIMATED ADDITIONAL COSTS FOR PROPOSED PROGRAM					
INSTITUTION	East Carolina Univeristy	DATE	1-Aug-17		
Program (CIP, Name, Level)	30.0000, Integrative Coastal and Marine Sciences (ICMS), Doctoral				
Degree(s) to be Granted	Ph.D.	Program Year	Year 2 (2020-2021)		
Differential tuition requested per student per academic yr		\$0			
Projected annual FTE students		24			
Projected annual differential tuition		\$0			
Percent differential tuition for financial aid		0%			
Differential tuition remainder		\$0			
	ADDITIONAL FUNDS REQUIRED - BY SOURCE				
	Reallocation of Present Institutional Resources	Projected Differential Tuition	Enrollment Increase Funds	Other New Allocations (Fees; Campus Tuition)	Total
EPA/SPA Regular Salaries					
Administrative Assistant (1 FTE)	\$ 40,000.00	\$ -	\$ -	\$ -	\$ 40,000.00
EPA Academic Salaries					
9.1 FTE faculty in current CRM PhD	\$ 817,755.19	\$ -	\$ -	\$ -	\$ 817,755.19
	\$ -	\$ -	\$ -	\$ -	\$ -
Social Security (7.65%)	\$ 65,618.27	\$ -	\$ -	\$ -	\$ 65,618.27
State Retirement (18%)	\$ 154,395.93	\$ -	\$ -	\$ -	\$ 154,395.93
Medical Insurance (\$5,500 per FTE)	\$ 52,800.00	\$ -	\$ -	\$ -	\$ 52,800.00
Director stipend (1)	\$ 18,500.00	\$ -	\$ -	\$ -	\$ 18,500.00
Course Releases - Director (2)	\$ 16,500.00	\$ -	\$ -	\$ -	\$ 16,500.00
Graduate Stipends					\$ -
Graduate Assistants (16 @ \$23K)	\$ 368,000.00	\$ -	\$ -	\$ -	\$ 368,000.00
In-state tuition (16 @ \$4749)	\$ 75,984.00	\$ -	\$ -	\$ -	\$ 75,984.00
Out-of-state remissions (3 @ \$13,149)	\$ 39,447.00	\$ -	\$ -	\$ -	\$ 39,447.00
Health Insurance (16 @ \$2540)	\$ 40,640.00				\$ 40,640.00
Supplies and Materials					
Instructional Supplies	\$ 10,000.00		\$ -	\$ -	\$ 10,000.00
Computer Software	\$ -		\$ -	\$ -	\$ -
Current Services					
(Identify)	\$ -	\$ -	\$ -	\$ -	\$ -
Travel	\$ 10,000.00	\$ -	\$ -	\$ -	\$ 10,000.00
Communications	\$ 1,000.00	\$ -	\$ -	\$ 1,000.00	\$ 2,000.00
Printing and Binding	\$ 1,000.00	\$ -	\$ -	\$ -	\$ 1,000.00
Advertising	\$ 1,000.00	\$ -	\$ -	\$ 1,000.00	\$ 2,000.00
Fixed Charges					
(Identify)	\$ -	\$ -	\$ -	\$ -	\$ -
Capital Outlay (Equipment)					
New Faculty Start Up Equipment	\$ -	\$ -	\$ -	\$ -	\$ -
					\$ -
Libraries	\$ -	\$ -	\$ -	\$ -	\$ -
					\$ -
TOTAL ADDITIONAL COSTS	\$ 1,712,640.40	\$ -	\$ -	\$ 2,000.00	\$ 1,714,640.40

Request to Establish the ECU & UNCW PhD in Integrative Coastal and Marine Sciences (ICMS)
Document updated 9/2/17

SUMMARY OF ESTIMATED ADDITIONAL COSTS FOR PROPOSED PROGRAM					
INSTITUTION	East Carolina Univeristy	DATE	1-Aug-17		
Program (CIP, Name, Level)	30.0000, Integrative Coastal and Marine Sciences (ICMS), Doctoral				
Degree(s) to be Granted	Ph.D.	Program Year	Year 3 (2021-2022)		
Differential tuition requested per student per academic yr		\$0			
Projected annual FTE students		24			
Projected annual differential tuition		\$0			
Percent differential tuition for financial aid		0%			
Differential tuition remainder		\$0			
	ADDITIONAL FUNDS REQUIRED - BY SOURCE				
	Reallocation of Present Institutional Resources	Projected Differential Tuition	Enrollment Increase Funds	Other New Allocations (Fees; Campus Tuition)	Total
EPA/SPA Regular Salaries					
Administrative Assistant (1 FTE)	\$ 40,000.00	\$ -	\$ -	\$ -	\$ 40,000.00
EPA Academic Salaries					
9.1 FTE faculty in current CRM PhD	\$ 817,755.19	\$ -	\$ -	\$ -	\$ 817,755.19
	\$ -	\$ -	\$ -	\$ -	\$ -
Social Security (7.65%)	\$ 65,618.27	\$ -	\$ -	\$ -	\$ 65,618.27
State Retirement (18%)	\$ 154,395.93	\$ -	\$ -	\$ -	\$ 154,395.93
Medical Insurance (\$5,500 per FTE)	\$ 52,800.00	\$ -	\$ -	\$ -	\$ 52,800.00
Director stipend (1)	\$ 18,500.00	\$ -	\$ -	\$ -	\$ 18,500.00
Course Releases - Director (2)	\$ 16,500.00	\$ -	\$ -	\$ -	\$ 16,500.00
Graduate Stipends					\$ -
Graduate Assistants (16 @ \$23K)	\$ 368,000.00	\$ -	\$ -	\$ -	\$ 368,000.00
In-state tuition (16 @ \$4749)	\$ 75,984.00	\$ -	\$ -	\$ -	\$ 75,984.00
Out-of-state remissions (3 @ \$13,149)	\$ 39,447.00	\$ -	\$ -	\$ -	\$ 39,447.00
Health Insurance (16 @ \$2540)	\$ 40,640.00				\$ 40,640.00
Supplies and Materials					\$ -
Instructional Supplies	\$ 10,000.00		\$ -	\$ -	\$ 10,000.00
Computer Software	\$ -		\$ -	\$ -	\$ -
Current Services					\$ -
(Identify)	\$ -	\$ -	\$ -	\$ -	\$ -
Travel	\$ 10,000.00	\$ -	\$ -	\$ -	\$ 10,000.00
Communications	\$ 1,000.00	\$ -	\$ -	\$ 1,000.00	\$ 2,000.00
Printing and Binding	\$ 1,000.00	\$ -	\$ -	\$ -	\$ 1,000.00
Advertising	\$ 1,000.00	\$ -	\$ -	\$ 1,000.00	\$ 2,000.00
Fixed Charges					\$ -
(Identify)	\$ -	\$ -	\$ -	\$ -	\$ -
Capital Outlay (Equipment)					\$ -
New Faculty Start Up Equipment	\$ -	\$ -	\$ -	\$ -	\$ -
Libraries	\$ -	\$ -	\$ -	\$ -	\$ -
					\$ -
TOTAL ADDITIONAL COSTS	\$ 1,712,640.40	\$ -	\$ -	\$ 2,000.00	\$ 1,714,640.40

Request to Establish the ECU & UNCW PhD in Integrative Coastal and Marine Sciences (ICMS)
Document updated 9/2/17

SUMMARY OF ESTIMATED ADDITIONAL COSTS FOR PROPOSED PROGRAM					
INSTITUTION	East Carolina Univeristy	DATE	1-Aug-17		
Program (CIP, Name, Level)	30.0000, Integrative Coastal and Marine Sciences (ICMS), Doctoral				
Degree(s) to be Granted	Ph.D.	Program Year	Year 4 (2022-2023)		
Differential tuition requested per student per academic yr		\$0			
Projected annual FTE students		24			
Projected annual differential tuition		\$0			
Percent differential tuition for financial aid		0%			
Differential tuition remainder		\$0			
ADDITIONAL FUNDS REQUIRED - BY SOURCE					
	Reallocation of Present Institutional Resources	Projected Differential Tuition	Enrollment Increase Funds	Other New Allocations (Fees; Campus Tuition)	Total
EPA/SPA Regular Salaries					
Administrative Assistant (1 FTE)	\$ 40,000.00	\$ -	\$ -	\$ -	\$ 40,000.00
EPA Academic Salaries					
9.1 FTE faculty in current CRM PhD	\$ 817,755.19	\$ -	\$ -	\$ -	\$ 817,755.19
	\$ -	\$ -	\$ -	\$ -	\$ -
Social Security (7.65%)	\$ 65,618.27	\$ -	\$ -	\$ -	\$ 65,618.27
State Retirement (18%)	\$ 154,395.93	\$ -	\$ -	\$ -	\$ 154,395.93
Medical Insurance (\$5,500 per FTE)	\$ 52,800.00	\$ -	\$ -	\$ -	\$ 52,800.00
Director stipend (1)	\$ 18,500.00	\$ -	\$ -	\$ -	\$ 18,500.00
Course Releases - Director (2)	\$ 16,500.00	\$ -	\$ -	\$ -	\$ 16,500.00
Graduate Stipends					\$ -
Graduate Assistants (16 @ \$23K)	\$ 368,000.00	\$ -	\$ -	\$ -	\$ 368,000.00
In-state tuition (16 @ \$4749)	\$ 75,984.00	\$ -	\$ -	\$ -	\$ 75,984.00
Out-of-state remissions (3 @ \$13,149)	\$ 39,447.00	\$ -	\$ -	\$ -	\$ 39,447.00
Health Insurance (16 @ \$2540)	\$ 40,640.00				\$ 40,640.00
Supplies and Materials					\$ -
Instructional Supplies	\$ 10,000.00		\$ -	\$ -	\$ 10,000.00
Computer Software	\$ -		\$ -	\$ -	\$ -
Current Services					\$ -
(Identify)	\$ -	\$ -	\$ -	\$ -	\$ -
Travel	\$ 10,000.00	\$ -	\$ -	\$ -	\$ 10,000.00
Communications	\$ 1,000.00	\$ -	\$ -	\$ 1,000.00	\$ 2,000.00
Printing and Binding	\$ 1,000.00	\$ -	\$ -	\$ -	\$ 1,000.00
Advertising	\$ 1,000.00	\$ -	\$ -	\$ 1,000.00	\$ 2,000.00
Fixed Charges					\$ -
(Identify)	\$ -	\$ -	\$ -	\$ -	\$ -
Capital Outlay (Equipment)					\$ -
New Faculty Start Up Equipment	\$ -	\$ -	\$ -	\$ -	\$ -
Libraries	\$ -	\$ -	\$ -	\$ -	\$ -
					\$ -
TOTAL ADDITIONAL COSTS	\$ 1,712,640.40	\$ -	\$ -	\$ 2,000.00	\$ 1,714,640.40

B. Based on the campus’ estimate of available existing resources or expected non-state financial resources that will support the proposed program (e.g., federal support, private sources, tuition revenue, etc), will the campus:

1. Seek enrollment increase funds or other additional state appropriations (both one-time and recurring) to implement and sustain the proposed program? If so, please elaborate.

No enrollment growth is planned at ECU when the students in the existing CRM PhD program transfer to the new ICMS PhD program. At ECU, resources allocated to the existing CRM PhD program will be transferred to the new ICMS PhD program.

2. Require differential tuition supplements or program-specific fees? If so, please elaborate.

Yes. UNCW will require a tuition differential to ensure that students in the Joint PhD in ICMS are charged the same combination of tuition and fees as their counterparts on ECU’s campus. This is part of our broader strategy that ensures students on both campuses have equal access to facilities and resources. The Implementation Plan in Attachment 2 (p. 35) describes these efforts in greater detail.

a. State the amount of tuition differential or program-specific fees that will be requested.

UNCW will request the following differential tuition:

Number of credits	UNCW tuition	ECU tuition	UNCW Total	ECU total	Difference between schools due to tuition & fee differences*
1-2 hours	578.25	593.63	777.27	1,266.38	\$489.11
3-5 hours	1,156.50	1,187.25	1,421.01	1,860.00	\$438.99
6-8 hours	1,734.75	1,780.88	2,550.50	3,126.38	\$575.88
9 or more	2,313.00	2,374.50	3,636.87	3,720.00	\$83.13
Health	\$1,280.00	\$1,270.00			0.00

*These figures represent the additional revenue that UNCW will collect and roll into their budget. These differences were calculated using fall 2017 tuition rates.

b. Describe specifically how the campus will spend the revenues generated.

The revenues will be used to provide some of the needed support for students and faculty involved in the delivery of the Joint PhD in ICMS on UNCW’s campus (Table 1B) as shown in the UNCW budget sheets.

c. Does the campus request the tuition differential or program-specific fees be approved by the Board of Governors prior to the next Tuition and Fee cycle?

We will seek approval of the UNCW's tuition differential with this proposal so that total tuition and fees on both campuses will be equal at the time the program is launched. ECU is not seeking a tuition differential.

- C. If enrollment increase funding, differential tuition, or other state appropriations noted in the budget templates are not forthcoming, can the program still be implemented and sustained and, if so, how will that be accomplished? Letters of commitment from the Chancellor and/or Chief Academic Officer should be provided.**

Letters of commitment from both Provosts at both ECU and UNCW are attached.

XI. Evaluation Plans.

- A. Criteria to be used to evaluate the quality and effectiveness of the program, including academic program student learning outcomes.**

All students in the ICMS PhD Program will be evaluated per SACSCOC guidelines provided by each campus's Institutional Assessment and Reporting organization. Program directors will conduct programmatic assessment, annually, and will involve successful completion of academic milestones such as passing of core competency exams, achievement of candidacy, etc. Current learning outcomes in the existing CRM PhD program will serve as the starting point for the new ICMS program: 1) original scholarship in a coastal research topic; 2) thematic knowledge of coastal natural and social sciences; 3) interdisciplinary knowledge across coastal natural and social sciences; 4) quantitative skills; and 5) effective oral communication. Enrollment and number of degrees awarded must meet or exceed UNC-GA low productivity guidelines. Employment outcomes of graduates will be assessed and benchmarked against BLS data in the discipline.

- B. Measures (metrics) to be used to evaluate the program (include enrollments, number of graduates, and student success).**

The success of the PhD Program in ICMS will be measured using the following metrics:

- Enrollments (including student diversity)
- Number of PhD degrees awarded
- Research productivity of faculty and students participating in the PhD Program in ICMS
- Number of new research collaborations and partnerships developed between ECU and UNCW
- Completion rates consistent with national norms within each area

- C. The plan and schedule to evaluate the proposed new degree program prior to the completion of its fourth year of operation.**

One of the roles and responsibilities of the faculty advisory committee will be to assist the coordinators on both campuses with programmatic assessment pursuant to the SACSCOC requirements. Annual review by the two campus program directors of the criteria and measures in XI.A and XI.B will ensure that the progress implementing the Joint PhD in ICMS is evaluated on an ongoing basis. At the end of the third year of implementation the

Request to Establish the ECU & UNCW PhD in Integrative Coastal and Marine Sciences (ICMS)
Document updated 9/2/17

assessment data will be summarized by the Joint Faculty Advisory Committee and submitted to the respective campus assessment offices, deans and provosts for review.

In addition, ECU develops an annual post-approval metrics report using key indicators, such as actual student enrollment and degrees awarded. This report is provided beginning with the first fall of establishment/enrollment and continues for five years post-establishment. In the third year of establishment, an additional post-approval survey is conducted for any program that has not achieved specialized accreditation. The report is reviewed by the ECU Academic Council, and any deficiencies are addressed with the appropriate dean.

XII. Attachments. Attach the final approved Request to Plan as the first attachment following this document.

This proposal to establish a new degree program has been reviewed and approved by the appropriate campus committees and authorities.

ECU Chancellor: _____ **Date:** _____

UNCW Chancellor: _____ **Date:** _____

Attachment 1

**APPENDIX A
UNIVERSITY OF NORTH CAROLINA
REQUEST FOR AUTHORIZATION TO PLAN A NEW DEGREE PROGRAM**

Attachment 2

**ADMINISTRATIVE IMPLEMENTATION PLAN FOR THE
JOINT PHD IN INTEGRATIVE COASTAL AND MARINE SCIENCES (ICMS)**

Table of contents

Purpose of Administrative Implementation Document	37
Program Administration.....	37
Directory of Implementation Contacts as of August 19, 2017.....	37
Equitable Distribution of Students	40
Reporting, Transcripts and Permanent Records.....	40
Admissions.....	40
Admissions Coding Structures	41
Orientation	43
Registration/Courses.....	43
Advising Codes/Pins for Registration	43
<i>Courses and Grading</i>	44
Course Set-up & Crosswalk.....	44
Registration Business Cycle	44
Tuition and Fees.....	45
Financial Aid and Assistantship Funding	45
Technology	46
Instructional Technology and Campus Infrastructure	46
Services	46
Computer Accounts	46
ID CARDS	46
Campus Parking.....	46
Recreational Facilities	46
Athletics	46
Libraries	47
Student Health Services	47
Transportation	47
University Writing Center	47
Degree Audit/Graduation	47
Dissertation.....	48
Table 1.	48

Purpose of Administrative Implementation Document

This document describes the administrative implementation plan across the two campuses (ECU and UNCW) needed to ensure the smooth administration of the Joint PhD in Integrative Coastal and Marine Sciences (ICMS). While both universities are within the UNC system with some parallel systems and procedures, there are still specific distinctions that require clarification and/or confirmation. This implementation document will guide all personnel in implementing procedures to ensure students are appropriately enrolled at both institutions and that overall program administration can be efficient and seamless.

Program Administration

Each campus will have a Graduate Program Coordinator and a Graduate Advisory Committee to oversee the program's curriculum, academic policies, admissions decisions, etc., as described in the Request for Authorization to Establish document. One of the coordinators will serve as the Director of the ICMS program for both campuses. The other coordinator will hold the title of Assistant Director. Assignment of the primary director will rotate between the campuses on three-year terms.

Directory of Implementation Contacts as of August 19, 2017

Office/Function	ECU Contact	Email	UNCW Contact	Email
Program Administration	Siddhartha Mitra Sheila Ellis (admin)	mitras@ecu.edu elliss@ecu.edu	Steve Skrabel	skrabel@uncw.edu
Graduate Dean	Paul Gemperline	gemperlinep@ecu.edu	Ron Vetter	vetterr@uncw.edu
VC for Student Affairs	Virginia Hardy	hardyv@ecu.edu	Patricia Leonard	leonard@uncw.edu
Provost	Ron Mitchelson	mitchelsonr@ecu.edu	Marilyn Sheerer	sheererm@uncw.edu
Admissions	Heidi Puckett	pucketh@ecu.edu	Kimberly Harris	harrisk@uncw.edu
Computing Services	Zach Loch	lochz@ecu.edu	April Lewis	lewisv@uncw.edu
ID Cards	Katie Heacox	heacoxk@ecu.edu	Celeste Jones	jonesc@uncw.edu
Registration	Amy Barber	bissettea@ecu.edu	David Childers	childersd@uncw.edu

Financial Aid	Julie Poorman	poormanj@ecu.edu	Tania Urbinati	urbinatit@uncw.edu
Tuition and Fees	Michael Fox	foxmi@ecu.edu	Kim Lundy	zadellk@uncw.edu
Parking	Debra Garfi	garfid@ecu.edu	Celeste Jones	jonesc@uncw.edu
Rec Center	Janis Steele	steelej@ecu.edu	Tim McNeilly	mneillyt@uncw.edu
Athletics Services	Lee Workman	workmanl@ecu.edu	Rob Brickels	brickelsr@uncw.edu
Transportation	Nick Pittman	Pittmann15@ecu.edu	Ken Kaiser	kaiserk@uncw.edu
Library Services	Bryna Coonin	cooninb@ecu.edu	Anne Pemberton	pembertona@uncw.edu
Student Health Services	LaNika Wright	wrightla@ecu.edu	Katrin Wesner	wesnerk@uncw.edu
Bookstores	Bryan Tuten	tutenb@ecu.edu	Cindy Salmon	salmon@uncw.edu
Housing	William McCartney	mccartneyw@ecu.edu	Nic Troutman	troutmann@uncw.edu
Writing Center	Nicole Caswell	caswelln@ecu.edu	Carol Porter	porter@uncw.edu
Speech Communication Center	Pam Hopkins	hopkinsp@ecu.edu		
Orientation	Kathleen Cox	coxka@ecu.edu	Nancy Holland	hollandn@uncw.edu
Graduation	Bernie Schulz	schulzb@ecu.edu	Wanda Underwood	underwoodw@uncw.edu
VA Benefits	Nicole Jablonski	Jablonskin15@ecu.edu	Tania Urbinati	urbinatit@uncw.edu
Assistantships, Waivers, Stipends	Alexis Morris	morrisal@ecu.edu	Wanda Underwood	underwoodw@uncw.edu
IT- Banner	Savon Lynn	lynns@ecu.edu	Betsy McIntosh	mcintoshb@uncw.edu
DegreeWorks	Novine Kros	krosn@ecu.edu	David Childers	childersd@uncw.edu

	Karen Rupp	ruppk@ecu.edu		
GA Reporting/ & Assessment	TBD	seniora@ecu.edu	TBD	
Blackboard	Matt Long	longm@ecu.edu	April Lewis	lewisa@uncw.edu
Disability Support Services	Liz Johnston	johnstone@ecu.edu	Betsy Terkeltoub	terkeltoub@uncw.edu
University Registrar	Angela Anderson	andersona@ecu.edu	Jonathan Reece	reecej@uncw.edu

Equitable Distribution of Students

- Students will apply to either of the two universities but will be considered for admission by the Joint Admissions Committee, made up of faculty from both campuses (see Figure 2 in main document).
- The campus providing funding for a student will be designated as the student's home campus.
- Students will have an ID number and ID card from each institution to ensure students have access to resources on both campuses (library, computer systems and software, etc).
- Students will take courses from both institutions. (Students will have a "no bill" code in Banner at the institution where they are not paying tuition when they enroll in a course on that campus)
- Faculty will be able to co-teach a course (See Registration Section; page 43)
- Students will have access to services on both campuses (see sections of this document for specifics).
- If a student wishes to change advisors such that a student's funding is transferred to the other campus, the campus providing the majority of funding will be designated as the student's "home campus."

Reporting, Transcripts and Permanent Records

Both campuses are subject to the UNC DataMart and will submit data for the "home campus" students at their university. Technologies, processes, and personnel already present at each institution will utilize already existing systems for creating, storing, and distributing transcripts and other permanent records for each student and the program data.

Admissions

All Applicants:

- Applicants will apply through their preferred "home campus" institution according to the system being used. For ECU, the current system is Hobson's Radius, while for UNCW it is Hobson's ApplyYourself, which will be migrated to Hobson's Radius in the next year.
- Applicants will upload their transcripts and credentials into the institutional portal of the home campus institution.
- This information is used to make decisions, which are made jointly between ECU and UNCW per the Admissions Committee. The Director of Graduate Admissions at each institution will have "viewing" capability of admissions information at both the home and partner university and will facilitate dissemination of complete application packets to the full joint Admissions Committee.
- After the emails of acceptance have gone out through the respective university systems, the individual serving as the Joint Program Director over both campuses will send a welcome message to all students.
- Identical automatically-generated emails will be sent to applicants and newly-admitted students will be the same on both campuses to ensure equitable student experiences.
- Students will use a link in the offer of admission email from their home campus to notify their intent to enroll. The Director of Admissions at each Graduate School will maintain a master list of students for that home campus. This list will be

communicated to the Joint Director of the program to ensure one master list is developed/maintained.

- Students are advised by their home campus regarding where to submit any outstanding transcripts or credentials including standardized test scores, foreign transcript evaluations, letters of recommendation, essays, and any other admissions documents that are deemed necessary by either university.
- Students are sent "welcome" emails from their home campus with information about account activation, registration, etc.
- All students will be assigned a Banner ID by each campus through existing campus processes and other procedures that typically occur during admissions.
- Each university and the Joint Program Director will contact all students with information on how to activate accounts on their campus.
- The students will follow the academic calendar in the following manner:
 - For graduation purposes, dissertation deadlines, and major components of being in the degree program, the student will observe the academic calendar and deadlines for the home campus.
 - For individual classes, the student will observe the academic calendar and deadlines for the campus offering the course, referred to as the “teaching school.” Course syllabi for courses jointly administered across both campuses will clearly identify all necessary deadlines (which should be a reflection of one of the campuses’ policies).
 - The joint program will develop guidelines on academic performance, probation, and dismissal consistent with the Graduate School policies of both universities. Note that time limits and minimum GPA are already specified in the request for Authorization to Establish proposal. These guidelines will be published in the Student Handbook and in the Graduate Catalog of each university.

Admissions Coding Structures

In form SAAADMS (application) within ECU Banner

	ECU Home Student	UNCW Home Student
Level		GR
ATY		GR
STY		G (rolls to C for subsequent terms)
Majo		DCMS (not determined...just suggestion)
Dept		BIO
Program		(do not use)
Degree		PhD
Conc Codes		Will there be concentrations?

In form SAAADMS (application) within UNCW Banner

	ECU Home Student	UNCW Home Student
Level		GR
ATY		GR

STY		<i>G (rolls to C for subsequent terms)</i>
Majo		<i>DCMS (not determined...just suggestion)</i>
Dept		BIO
Program		<i>(do not use)</i>
Degree		PhD
Conc Codes		Will there be concentrations?

In form SGBSTDN (learner) within ECU Banner

	ECU Home Student	UNCW Home Student
Level		GR
ATY		GR
STY		<i>G (rolls to C for subsequent terms)</i>
Majo		<i>DCMS (not determined...just suggestion)</i>
Dept		BIO
Program		<i>(do not use)</i>
Degree		PhD
Conc Codes		Will there be concentrations?

	ECU Home Student	UNCW Home Student
Level		GR
ATY		GR
STY		<i>G (rolls to C for subsequent terms)</i>
Majo		<i>DCMS (not determined...just suggestion)</i>
Dept		BIO
Program		<i>(do not use)</i>
Degree		PhD
Conc Codes		Will there be concentrations?

In form SGBSTDN (learner) within UNCW Banner

	ECU Home Student	UNCW Home Student
Level		GR
ATY		GR
STY		<i>G (rolls to C for subsequent terms)</i>
Majo		<i>DCMS (not determined...just suggestion)</i>
Dept		BIO
Program		<i>(do not use)</i>
Degree		PhD
Conc Codes		Will there be concentrations?

Orientation

Both Graduate Schools will make all students aware of online or campus orientations that can assist students in becoming comfortable with both campuses.

The Joint Program Director will ensure that a campus-based orientation (at either campus) occurs at least once per year where all students and faculty affiliated with the program are encouraged to attend. First-year students will be required to attend this campus-based orientation (location can vary year to year). After their first year, can attend on an as-needed or as-requested basis.

The program coordinators at each university should ensure students attend a meeting at least yearly to review (as needed):

- Hiring contracts, employment requirements, I-9 forms, etc.
- Student Health Center regulations for immunizations, flu shots, etc.
- Students' use of campus resources for enrollment (i.e., Banner Self-Service for registering for classes, Degree Works for program of study and planning, etc.)
- Changes in university policies that affect joint students; i.e., new parking regulations on one campus that affect students coming to that campus for classes, changes in academic policies that would affect students when enrolled in courses on that campus, etc.
- Changes to the ICMS PhD program such as requirements for dissertations, defenses, programs of study, field work, etc. The Joint Program Director should maintain a working list of all updates that need to be documented and communicated to students regularly.
- The course cross-walk to ensure knowledge of all courses within the program.

In addition, staff members affiliated with the joint program should be provided regular updates at both campuses, to ensure that staff can most efficiently assist students.

Registration/Courses

Advising Codes/Pins for Registration

New Students:

- All students should be registered for their first semester of courses within 30-60 days of accepting the offer of admission. This should be done either by the program director for that campus or by the student after receiving instructions from the program director for the student's home campus. The home campus should instruct the student in how to enroll (via Banner Self Service at ECU and via SeaNet at UNCW)

Continuing Students:

- The program directors across both campuses will encourage students to obtain course enrollment advice from their program advisor. The campus program directors should provide regular direction regarding required registration dates and procedures for enrollment on each campus.

Courses and Grading

- Courses will be listed in the registration schedules on both campuses.
- Each home campus will use the grading system that has been approved for that campus. If these differ, the grading system used will be the one for the campus that is offering the course. Students will be responsible for understanding both grading systems.
- Courses taken at the non-home institution will be on the home campus transcript as transfer credits. Currently, the Registrars at each institution are investigating whether grades can be transferred along with the course credit. These transfer credits (from within the joint program) do not count in the maximum number of transfer credits allowed (1/3 of the total degree credits as stated in the Graduate Catalog of each institution).
- Grades, credits, and calculated GPA for all courses taken at either institution in the joint program will be used to determine satisfactory progress for all students.
- The Program Director will maintain a cross-walk of courses offered at each institution with their equivalent at the other institution. This cross-walk will be updated regularly and published each semester on the joint program website. See Figure 1 for an example.
- Institutional data and registrar personnel will create the Banner codes and course numbers once the program is approved at UNC-GA. Efforts will be made to have the same codes and course numbers although, due to differences at each institution in Banner programming, exact duplication may not be possible. A cross-walk of courses will be published regularly to educate the student and faculty population regularly.
- Graduate Students at ECU and UNCW are not required to use PINS during the registration process.
- Graduate students are required to register themselves for all courses when possible with few exceptions. Both programs will ensure that students are enrolled by the deadlines published in the academic calendars at each institution. Late registration and late changes to registration (i.e., after Census Day) will not be allowed except in extreme unforeseen circumstances.
- Late registration situations and other registration enrollment exceptions will be reviewed according to prevailing campus procedures at both institutions. Students will adhere to the registration and enrollment policies of the campus offering the course.

Course Set-up & Crosswalk

- Courses will be listed in the registration schedules on both campuses.
- Capacity is set in the Home Banner system to accommodate the home student needs. Physical capacity of rooms must be monitored by the home campus offering the course.
- A crosswalk table of all courses for the program at each institution will be developed and updated by the Program Director on a semester basis.

Registration Business Cycle

- Enrollment data for the program and its courses will be shared with each partner institution the day after Census Day each semester.

Tuition and Fees

- The tuition, fees, and health insurance rates will be those of the institution with the highest rate.
- Students in the program will pay the same rate of tuition, fees (including audit fees), and health insurance. Payment will go to the school designated as their “home campus” and tuition and fees will roll up to the home campus budget. There will be no inter-institutional budget transfers associated with tuition, fees, or health insurance for this program.
- Each institution will ensure that tuition, fees, and health insurances charges are requested through appropriate processes for its campus.
- Tuition, fees, and health insurance will be charged at the “on-campus” rate.
- A tuition differential is requested for UNCW such that they are equivalent to ECU’s on-campus rate.
- Student will purchase health insurance from their home institution per the policy of the home institution but the cost will be the price of the institution with the higher rate.
- Both institutions will ensure that websites, program materials, and faculty communicate tuition rates and policies clearly.

Financial Aid and Assistantship Funding

Financial Aid:

ECU Home Students:

- Applying: FAFSA Application is sent to ECU by student, following rules currently in place at ECU.
- Awards/disbursements through ECU.

UNCW Home Students:

- Applying: FAFSA Application is sent to UNCW by student, following rules currently in place at UNCW.
- Awards/disbursements through UNCW.

Assistantships, Tuition Waivers & Stipends:

All students will be eligible for assistantships through the ICMS program and will be administered through their home campus. Assistantship levels should be equivalent across both campuses when funds are coming from Graduate School funding.

Assistantship levels from outside sources (grant agencies, scholarships, fellowships) may vary per the funder/donor.

Technology

Instructional Technology and Campus Infrastructure

Both campuses are currently equipped with ample technology infrastructure, hardware, and software to implement the program on each campus. Classroom management software already in place on both campuses will be used as needed for online or hybrid courses. In addition, both campuses are equipped for web and video conferencing. Students will have complete access to all technology services and tools available to active, current students on both campuses due to having a Banner ID number on both campuses and a student ID card on both campuses. The collaboration will ensure students have opportunities to work with state-of-the-art technology within the disciplines because the students will participate in classes and field-work on both campuses. Instructional Technology and Computing Services (ITCS) on both campuses maintain state-of-the-art hardware, software, and processes, and it is expected that both campuses are equipped well for this program well into the next decade.

Services

Computer Accounts

Students will be eligible for the computing privileges of each university as appropriate per their student status.

ID CARDS

Students will have a Banner ID at each institution and thus, an ID card at each institution. It is the student's responsibility to obtain these ID cards at the beginning of their program.

Campus Parking

Students will be expected to adhere to all university parking regulations at each respective institution. Discussions are occurring to determine if parking permits for each institution can be arranged by paying only the home institution.

Recreational Facilities

Every student pays the standard student fees at Home campus and both campuses will offer services to all ICMS students.

Athletics

ECU Home Students:

- In order to receive student tickets to athletic events not open to the public, student must be active and registered for classes.
- Students obtain tickets per existing policies at ECU.

- Discussions are occurring to determine reciprocity.

UNCW Home Students:

- In order to receive student tickets to athletic events not open to the public, student must be active and registered for classes.
- Students obtain tickets per existing policies at UNCW.
- Discussions are occurring to determine reciprocity.

Libraries

Students will have library privileges at both universities because they will have the appropriate ID card for each university.

Student Health Services

ECU Home Students:

- Current ECU ID is required to receive services
- Must provide Immunization records to ECU
- Must provide verification of insurance or waive out to ECU
- Will have access at UNCW with one joint ID or will have 2 ID cards.

UNCW Home Students:

- Current UNCW ID is required to receive services.
- Must provide Immunization records to UNCW
- Must provide verification of insurance to UNCW
- Will have access at UNCW with one joint ID or will have 2 ID cards.

Transportation

Students will have ID cards for both institutions and will be able to use campus transportation per the already existing policies of both universities.

University Writing Center

Students will have full access to the university writing centers at each institution through their campus ID cards.

Degree Audit/Graduation

Degree Audits/Plans of Study

At both institutions, plans of study are completed in DegreeWorks. The student and the program advisor are responsible for creating plans of study in DegreeWorks. The degree audit is used throughout the program. The final check of the student's degree audit will occur when the student applies to graduate (per the requirements of the home institution) one semester prior to the semester of graduation.

Students will participate in the graduation ceremony of their home institution. Regalia will be purchased through already present campus policies and processes at either ECU or UNCW. Students will RSVP or register to attend the graduation ceremony or any other recognition ceremonies on their home campus through already present campus policies and processes. The diploma will be developed collaboratively by the Registrars of each campus and will contain the program name, concentration and the names/seals of both ECU and UNCW. The diploma cover will be provided by the home institution. The student will be listed in the commencement program of both institutions.

Dissertation

All students in the joint program are required to produce a dissertation that represents an integrated approach across natural and social or health sciences to addressing an important problem in coastal and marine sciences. The format will be completed in accordance with the rules and regulations of the home institution for that student. The student will observe all deadlines for dissertation completion, defense, online submission, etc. as published in the academic calendar and/or program handbook or as communicated by the director of the joint program. The specific format of the document submitted may take on many forms such as a traditional chapter format, a compilation of publications, or other format as agreed upon by the Graduate School of each institution, the program director, the dissertation director and the dissertation committee. Each institution will be responsible for ensuring any required research approvals (IRB, IACUC) are obtained, the dissertation is in the appropriate format for that institution, and that the approved, completed document is uploaded to ProQuest or another repository for public access.

Specific dissertation requirements for the joint program will be published in the program handbook which will be available to students online at all times. Dissertation directors will be responsible for reviewing all pertinent language in this handbook with students under their directorship. Language in the handbook will include information such as proposal/prospectus requirements, timeline for projects, processes for obtaining a dissertation director and committee, expectations for defenses, and any other necessary information for successful completion of dissertations.

Table 1.

Joint Program in Integrative Coastal and Marine Sciences
Course Cross-Walk¹
Publication date: Fall 2017 (to be updated each semester)

Name of Course Offered	ECU Course Number	UNCW Course Number	Credits	Online, Face-to-Face or Hybrid	Semester Typically Offered
Example Course Title	EXMP ² 7000 ³	EXAM 7022	3	F2F	Fall

Second Example Course	EXMP 7001	EXAM 7021	2	Hybrid	Varies
Etc.					

¹The entire course cross walk will be updated, published, and available to all students each semester to ensure all students are aware of courses offered at each institution.

²Three or four digit course prefixes & Banner codes will be created once UNC-GA approval is granted; the appropriate personnel in each registrar's and institutional data offices will develop. The codes may not be the same at both institutions due to previously created codes already in use at each institution.

³The course numbers may not be the same across institutions although they will represent the same course.

Attachment 3

**CURRICULUM VITAE OF ECU & UNCW FACULTY MEMBERS INVOLVED IN
JOINT PHD IN INTEGRATIVE COASTAL AND MARINE SCIENCES (ICMS)**

Attachment 4

**PROPOSED CATALOG DESCRIPTION OF NEW, RETITLED, AND CROSS-LISTED ICMS
COURSE OFFERINGS AT ECU AND UNCW**

ICMS 7001: COASTAL and MARINE SCIENCE 1: Physical and Geological Sciences, (Cross listed as GEOL 7002)

Fundamental concepts of geological and physical oceanographic principles of coastal systems.

ICMS 7002: COASTAL and MARINE SCIENCE 2: Chemical and Ecological Sciences, (Cross listed as BIOL 7005)

Presentation and discussion of fundamental concepts of chemistry and biology within the context of the coastal zone and with emphasis on local ecosystems.

ICMS 7003 - Interdisciplinary Research Seminar I (New Course)

Critical review and presentation of coastal and marine research from the primary literature focusing on using a multidisciplinary approach to find adequate solutions.

ICMS 7004 - Interdisciplinary Research Seminar II (New Course)

Interdisciplinary field-based laboratory course, applying natural and social science methods to a variety of coastal systems...

ICMS 7005 – Coastal Human Dimensions I (New Course)

Interdisciplinary course exposing students to breadth of social science theories and methods in anthropology, geography, and maritime studies.

ICMS 7006 – Coastal Human Dimensions II (formerly CRM 7005)

In-depth study of social dimensions of coastal resource management.

ICMS 7007: Coastal Economics and Policy I (cross-listed as ECON 7010)

Principles, jargon, and quantitative approaches to environmental and natural resource economics with application to coastal issues

ICMS 7008: Coastal Economics and Policy II (cross-listed as ECON 8540)

Using economic approaches to investigate an empirical research question applicable to coastal natural resources.

ICMS 7009: Coastal Human Health I (new course)

Theory and practical understanding of the dynamic interactions between factors associated with human health and the coastal environment.

ICMS 7010: Coastal Human Health II, Spring Semesters (cross-listed as PHAR 7680)

Overview of general principles in toxicology, toxic responses of major organs and systems, major classes of toxicants, and broad applications of the toxicological sciences relevant to coastal and marine environments and populations.