

Student Health Service



“Dedicated Health Professionals
Serving Our Campus Community”



Location & Hours

Central Campus,
Between Joyner Library and the Flanagan Building

Fall and Spring Semester Hours:

Monday, Tuesday, Thursday, 8:00 AM - 6:30 PM

Wednesday 9:00 AM - 6:30 PM

Friday, 8:00 AM - 4:30 PM

Weekend Clinic:

Saturday & Sunday, 9:00 AM - 11:30 AM



After Hours Care



After Hours Nurse Phone Line

(252)328-6841

Can be called from anywhere

A student can also contact the local hospital:

UNIVERSITY HEALTH SYSTEMS
Pitt County Memorial Hospital



On Site Staff



- Physicians
- Nurse Practitioners
- Physicians Assistants
- Nursing Staff
- Health Educator
- Nutritionist
- X-ray Technicians
- Laboratory Technicians
- Pharmacists
- Immunization Staff
- Massage Therapist



Accessing Care

Appointments

- Our Open Access system ensures more same day appointments are available
- Can be made in person at Student Health, by phone, or online

Triage Care

- If appointments are full a Registered Nurse will assess urgent symptoms such as lacerations, vomiting, disabling injury or fever $> 102^{\circ}$

Self Care

- Pharmacist on duty for recommendations about over the counter items.
- General OTC Items, Cough and Cold Relievers, Pain Relievers, Personal Care Items, Sun Safety Items, Contraceptive Products

Students Are Encouraged To Make Appointments!



Appointments

- Physicals
- Upper Respiratory Infections
- Elective Procedures
- GYN Problems
- Injuries
- Skin Problems
- Nutrition Counseling
- Massage Therapy
- Long Term Medical Problems
- STI Testing and Counseling
- Pregnancy Testing and Referral
- Non Urgent Mental Health Problems or Referral

Triage Care

- Acute, Disabling Injury or Pain
- Illness with Temperature $> 102^{\circ}$
- Lacerations or Acute Wounds
- Fainting Episodes
- Chest Pain
- Acute Emotional Problems
- Contagious Illness
- Burns
- Acute Abdominal Pain
- Acute Bleeding
- Seizures
- Acute Asthma Attacks
- Poisoning
- Head Injuries

Student Health Offers

- Laboratory
- Radiology
- Pharmacy
- Sports Medicine
- Tracking Nurse
- Health Education
- Nutrition
- Therapeutic Massage
- Referrals
- Allergy, Immunization Clinic





Health Insurance Portability and Accountability Act (HIPAA)

- Federal law that includes protection of medical records
- Confidentiality of records
- Age 18 considered an adult. No one other than health care providers can have access to medical information without written consent.

Health Insurance

- Private insurance
- Student Health Insurance plan available from Pearce and Pearce:

Website: www.studentinsurance.com

Phone: 1 -800- 222-6491



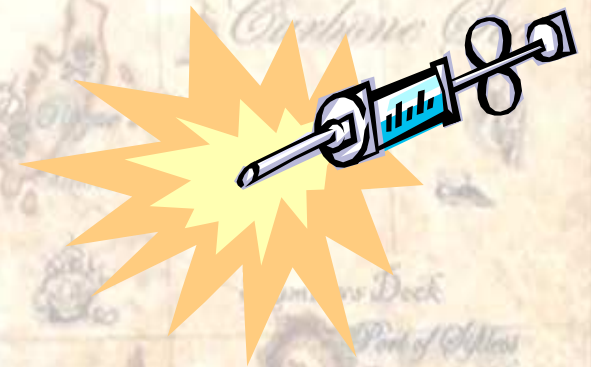
La Islas Hispania 1597
per cabo de bara

Reminder About Immunizations

NC state law requires all incoming students to provide updated immunization records.

A Few Words About:

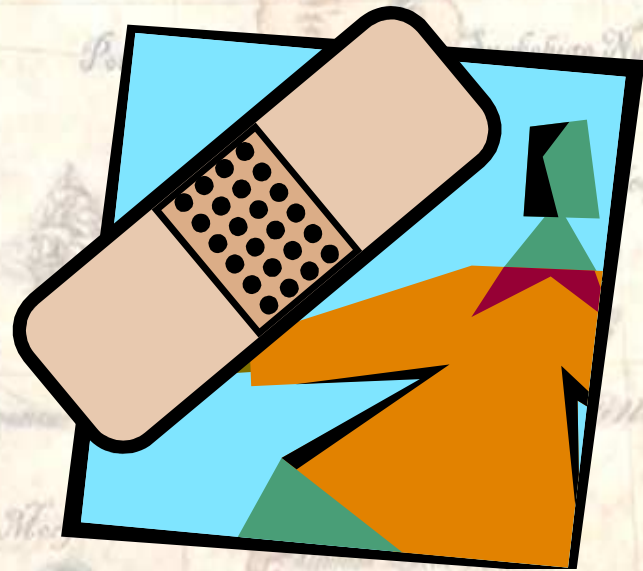
- Hepatitis B vaccine
- Meningococcal vaccine



What to Send to School

With Your Students

- Insurance Card
- Thermometer
- Tylenol/Ibuprofen
- Band-Aids
- Antibiotic ointment
(remember OTC items can also be purchased at Student Health Service)





Questions

- Phone
(252) 328-6841
- Immunization fax:
(252) 328-4007
- Fax for other documents:
(252) 328-0462
- Email
gotquestions@ecu.edu
- www.ecu.edu/studenthealth
 - Full Listing of Services
 - On-Line Brochures for Health Questions
 - Hours, Calendar, Location, Forms, Parking Questions
 - Pharmacy Medication and OTC list
 - Immunization Pricing
 - On-Line Medical Self Help Booklet
 - Contacts and Links