

# Extracting RG61 Equivalent from INB

ECU - Microsoft Internet Explorer provided by East Carolina University

File Edit View Favorites Tools Help

Back Forward Stop Refresh Home Search Favorites

Address <http://ecuinb1.intra.ecu.edu:9090/> Go Links SnagIt

# East Carolina University

## SCT Banner


East Carolina University

**BANNER - PRODUCTION**

- [Production - Internet Native Banner](#)
- [Production - Self Service Banner](#)

**BANNER - TEST**

- [TDT - Internet](#)
- [TDT - Self Service Banner](#)

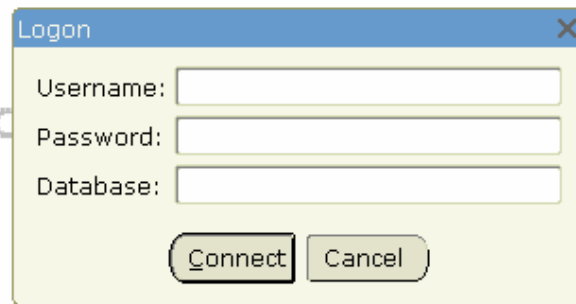


ITCS - Software Development Services  
209 Cotanche St  
Greenville, NC 27858

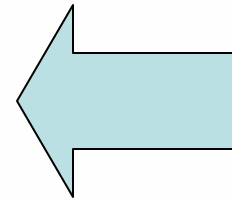
**Select Production – Internet Native Banner from the above web address.**

Local intranet

Start | Microsoft PowerPoint - [...] | ECU - Microsoft Inter... | 1:26 PM



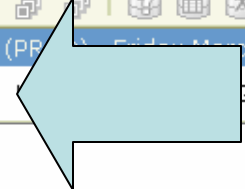
A screenshot of a 'Logon' dialog box. The dialog has a title bar with 'Logon' and a close button. It contains three text input fields: 'Username:', 'Password:', and 'Database:'. Below the fields are two buttons: 'Connect' and 'Cancel'.



**Enter your Banner username and Banner password.  
Leave Database blank.  
Select Connect.**



Go To...



- My Banner
- Banner
  - Student [\*STUDENT]
  - Financial [\*FINANCE]
  - Human Resources [\*HRS]
  - Financial Aid [\*RESOURCE]
  - General [\*GENERAL]
  - XtenderSolutions [\*BXS]

**Enter SSASECQ in the "Go To..." box.  
Then hit Enter on your keyboard.**

Products:

- My Links**
- - 
  - 
  - 
  - 
  - 
  - 
  -



**Banner Broadcast Messages**

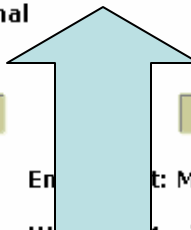
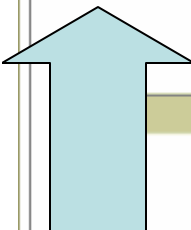
[Empty area for Banner Broadcast Messages]



Term ▼ 200780	Part of Term ▼	Registration From [Calendar Icon]	Registration To [Calendar Icon]	CRN	Block Schedule	Subject ▼ BIOL	Course	Section	Section Status ▼	Campus ▼
Course/Section Title		Schedule Type ▼		Instructional Method ▼		Duration	Unit ▼			
Cross List	Reserved Seats	Long	Syllabus	Comments	Enrollment: Maximum	[ ] - Actual	[ ] = [ ]			
					Waitlist: Maximum	[ ] - Actual	[ ] = [ ]			

Term ▼	Part of Term ▼	Registration From [Calendar Icon]	Registration To [Calendar Icon]	CRN	Block Schedule	Subject ▼	Course	Section	Section Status ▼	Campus ▼
[ ]	[ ]	[ ]	[ ]	[ ]	[ ]	[ ]	[ ]	[ ]	[ ]	[ ]
Link	List	Seats	Long	Syllabus	Comments	Enrollment: Maximum	[ ] - Actual	[ ] = [ ]		
[ ]	[ ]	[ ]	[ ]	[ ]	[ ]	Waitlist: Maximum	[ ] - Actual	[ ] = [ ]		



**Enter the appropriate term in the term block.**  
**Enter the appropriate subject in the subject field.**  
**Then hit F8 on your keyboard to execute the query.**



**This yields a list of all courses in that subject being offered for the term selected.**

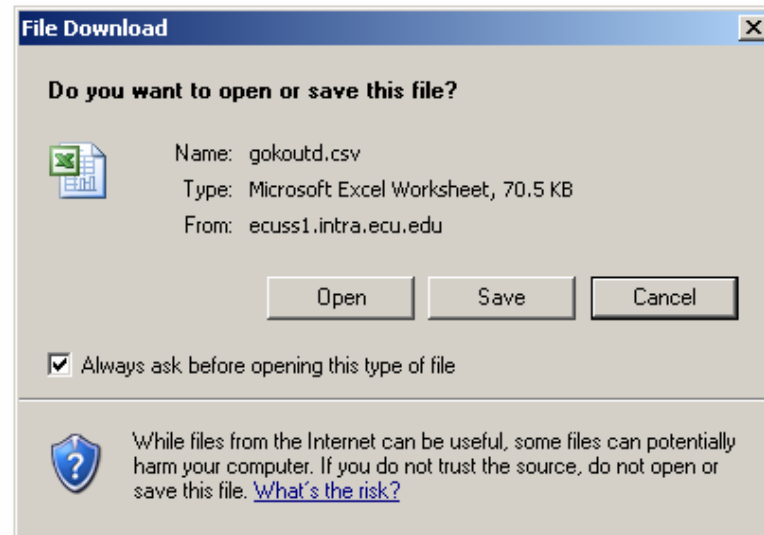
Term	Part of Term	Registration From	Registration To	CRN	Block Schedule	Subject	Course	Section	Section Status	Campus
200780	1			81926		BIOL	1050	001	A	008
Course/Section Title		Schedule Type		Instructional Method		Duration		Unit		
General Biology		04		TR						
Link	Cross List	Reserved Seats	Long	Syllabus	Comments	Enrollment: Maximum 250 - Actual 1 = 249		Waitlist: Maximum - Actual =		
<input type="checkbox"/>	<input type="checkbox"/>	<input type="checkbox"/>	<input type="checkbox"/>	<input type="checkbox"/>	<input type="checkbox"/>					
Term	Part of Term	Registration From	Registration To	CRN	Block Schedule	Subject	Course	Section	Section Status	Campus
200780	1			81927		BIOL	1050	002	A	008
Course/Section Title		Schedule Type		Instructional Method		Duration		Unit		
General Biology		04		TR						
Link	Cross List	Reserved Seats	Long	Syllabus	Comments	Enrollment: Maximum 176 - Actual 3 = 173		Waitlist: Maximum - Actual =		
<input type="checkbox"/>	<input type="checkbox"/>	<input type="checkbox"/>	<input type="checkbox"/>	<input type="checkbox"/>	<input type="checkbox"/>					

- Online Help
- Dynamic Help Query
- Dynamic Help Edit
- Help (Item Properties)
- Show Keys
- List
- Display Error
- Display ID Image
- Calendar
- Calculator
- Extract Data with Key
- Extract Data No Key**
- Technical Support
- About SCT Banner

Term	Part of Term	Registration From	Registration To	Block Schedule	Subject	Course	Section	Section Status	Campus
200780	1				BIOL	1050	001	A	008
Course/Section Title									
General Biology									
Link	Cross List	Reserved Seats	Long	Duration	Unit	Enrollment: Maximum 250 - Actual 1 = 249			
						Waitlist: Maximum - Actual =			

**Select Help from the top menu.  
Select "Extract Data No Key".**

Term	Part of Term	Registration From	Registration To	Schedule Type	Instructional Method	Duration	Unit	Enrollment: Maximum 176 - Actual 3 = 173	
200780	1			04	TR			Waitlist: Maximum - Actual =	
Course/Section Title									
General Biology									
Link	Cross List	Reserved Seats	Long	Syllabus	Comments				



**This will prompt you to open or save an Excel spreadsheet of the course offering list.**

**You may select save or simply open.**

	A	B	C	D	E	F	G	H	I	J	K	L	M	N	O
1	200780	1			81926		BIOL	1050	1	A		8 General Bi	4	TR	
2	200780	1			81927		BIOL	1050	2	A		8 General Bi	4	TR	
3	200780	1			81928		BIOL	1050	3	A		8 General Bi	4	TR	
4	200780	1			81929		BIOL	1050	4	A		8 General Bi	4	TR	
5	200780	1			81930		BIOL	1050	5	A		8 General Bi	4	TR	
6	200780	1			81931		BIOL	1050	6	A		8 General Bi	4	TR	
7	200780	1			88171		BIOL	1050	7	A		8 General Bi	4	TR	
8	200780	1			80250		BIOL	1050	601	A		650 General Bi	4	WWW	
9	200780	1			87000		BIOL	1050	602	A		650 General Bi	4	WWW	
10	200780	1			81932		BIOL	1051	1	A		8 General Bi	2	TR	
11	200780	1			81933		BIOL	1051	2	A		8 General Bi	2	TR	
12	200780	1			81934		BIOL	1051	3	A		8 General Bi	2	TR	
13	200780	1			81935		BIOL	1051	4	A		8 General Bi	2	TR	
14	200780	1			81936		BIOL	1051	5	A		8 General Bi	2	TR	
15	200780	1			81937		BIOL	1051	6	A		8 General Bi	2	TR	
16	200780	1			81938		BIOL	1051	7	A		8 General Bi	2	TR	
17	200780	1			81939		BIOL	1051	8	A		8 General Bi	2	TR	
18	200780	1			81940		BIOL	1051	9	A		8 General Bi	2	TR	
19	200780	1			81941		BIOL	1051	10	A		8 General Bi	2	TR	
20	200780	1			81942		BIOL	1051	11	A		8 General Bi	2	TR	
21	200780	1			81943		BIOL	1051	12	A		8 General Bi	2	TR	
22	200780	1			81944		BIOL	1051	13	A		8 General Bi	2	TR	
23	200780	1			81945		BIOL	1051	14	A		8 General Bi	2	TR	
24	200780	1			81946		BIOL	1051	15	A		8 General Bi	2	TR	
25	200780	1			81947		BIOL	1051	16	A		8 General Bi	2	TR	
26	200780	1			81948		BIOL	1051	17	A		8 General Bi	2	TR	
27	200780	1			81949		BIOL	1051	18	A		8 General Bi	2	TR	
28	200780	1			81950		BIOL	1051	19	A		8 General Bi	2	TR	
29	200780	1			81951		BIOL	1051	20	A		8 General Bi	2	TR	
30	200780	1			80254		BIOL	1051	601	A		650 General Bi	2	WWW	
31	200780	1			87017		BIOL	1051	602	A		650 General Bi	2	WWW	
32	200780	1			81952		BIOL	1060	1	A		8 Environme	4	TR	
33	200780	1			81953		BIOL	1060	2	A		8 Environme	4	TR	
34	200780	1			81954		BIOL	1060	3	A		8 Environme	4	TR	

**This Excel File is a comprehensive list of all courses in that subject area. It can be adjusted to suit your needs.**

<b>Column:</b>	<b>Data:</b>
<b>A</b>	<b>Term</b>
<b>B</b>	<b>not needed</b>
<b>C</b>	<b>not needed</b>
<b>D</b>	<b>not needed</b>
<b>E</b>	<b>CRN</b>
<b>F</b>	<b>not needed</b>
<b>G</b>	<b>Subject</b>
<b>H</b>	<b>Course Number</b>
<b>I</b>	<b>Section Number</b>
<b>J</b>	<b>not needed</b>
<b>K</b>	<b>Campus Code</b>
<b>L</b>	<b>Course Title</b>
<b>M</b>	<b>Credit Hours</b>
<b>N</b>	<b>Method (TR- face to face &amp; WWW – web)</b>
<b>O-V</b>	<b>not needed</b>
<b>W</b>	<b>Max Enrollment Limit</b>
<b>X</b>	<b>Actual Enrollment</b>
<b>Y</b>	<b>Remaining</b>
<b>Z-AB</b>	<b>not needed</b>