

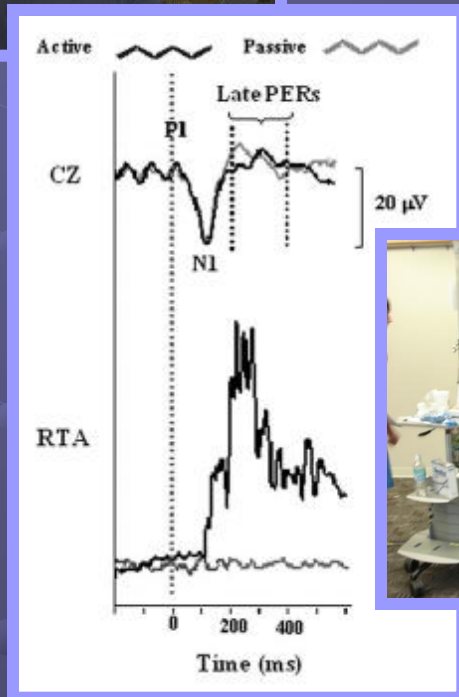
Is perception of surface motion influenced by vision or divided attention?

Russell KE, Harden AL, Murray NP, Allison LK



Somatosensory information from the feet & legs triggers balance recovery responses to prevent falls.

Perception of a disturbance in the relationship between the body and support surface occurs at both unconscious & conscious levels.



We are currently investigating whether the detection of subtle surface motion is affected by the removal of vision or the addition of a concurrent cognitive task.