

**Master of Public Health
Program Manual**

2009-2010

**Department of Public Health
Brody School of Medicine
East Carolina University
Hardy Building
600 Moyer Blvd., Mail stop 660
Greenville, NC 27834**

Table of Contents

EXECUTIVE SUMMARY	3
1.0 BACKGROUND.....	3
1.1 ABOUT THE MPH PROGRAM.....	3
1.2 WHAT IS PUBLIC HEALTH?	4
1.3 CAREER OPPORTUNITIES IN PUBLIC HEALTH?	4
1.4 ABOUT EAST CAROLINA UNIVERSITY	4
2.0 DESCRIPTION OF THE MPH PROGRAM	5
2.1 MISSION AND OBJECTIVES	5
2.2 ADMINISTRATION AND ORGANIZATION	6
2.3 CURRICULUM.....	7
2.4 OTHER REQUIREMENTS.....	10
2.5 APPLICATION AND ADMISSIONS.....	13
2.6 FINANCIAL COSTS	16
2.7 FINANCIAL AID, ASSISTANTSHIPS, REMISSIONS.....	16
2.8 PROGRAM DIRECTOR AND FACULTY.....	13
2.9 FREQUENTLY ASKED QUESTIONS.....	17

List of Tables

Table 1. Summary of Course Requirements by Credit Hours

Table 2. Core Courses by Area of Knowledge and Credit Hours

Table 3. Required Courses by Area of Concentration and Credit Hours

Table 4. Example of Courses to Fulfill Elective Requirements, ECU Graduate Catalog

Table 5. 20 Competencies of the Association of Schools of Public Health Provided by MPH Core Coursework

Table 6. Estimated Costs of Tuition and Fees by Credit Hours by Annual and Semester (estimated 2009)

Table 7. Summary of Major Categories of Expenses by Semester and Resident Status

Table 8. Core Faculty by Rank and Teaching Duties

Table 9. Adjunct Faculty in the ECU MPH Program

List of Exhibits

Exhibit 1. Organization of Department of Public Health, Brody School of Medicine, East Carolina University, October 2008

Exhibit 2. MPH Sample Degree Plan for Two-year Full Time Student

Executive Summary

This manual is intended for use by students as they consider application for admission, selection of their specific curriculum, and completion of requirements to become candidates for the Masters of Public Health (MPH) degree. The MPH degree program is accredited by the Council on Education in Public Health (CEPH). Students complete 45 semester credit hours (s.c.h.) for the MPH degree, of which 24 s.c.h. are core courses. An internship and professional paper are also required. In-person classes are offered once per week for three hours in the late afternoon. Several courses are available online. Additional program information can be found in the program page at <http://www.ecu.edu/mph/>.

This manual is also a compilation of philosophy, policies, and procedures of the MPH Program within the Department of Public Health (DPH), Brody School of Medicine (BSOM) at East Carolina University (ECU). This manual supplements policies, procedures, and requirements of the ECU Graduate School. Applications are submitted through the ECU Graduate Division and reviewed by DPH faculty for admissions decisions. Estimated program costs are included in this manual.

1.0. Background

1.1 About the MPH program

Health status indicators in eastern North Carolina (NC) are among the worst in the nation. The region's diverse population is predominantly rural and disproportionately poor. Meaningful improvement in the health status of the region's population requires a transformation in the practice of public health and medicine emphasizing prevention, health promotion, strategic partnerships, and greater efficiency. Training of public health professionals will provide leadership to implement this transformation.

ECU's practice-based program is specifically tailored to individuals working in public health, medicine, and health or health-related agencies without formal training in public health. Individuals with other academic or professional backgrounds with an interest in public health are also encouraged to apply. Courses are offered at times and in formats convenient to working professionals. A dual MD-MPH degree is available with admissions through the School of Medicine. The program incorporates practice-based teaching, competency-based learning, and evidence-based education with emphasis on field placement and communication skills.

The MPH degree program admitted its inaugural class in fall 2003. This interdisciplinary program prepares professionals to provide public health leadership in a variety of health and human service settings. Consistent with the public health needs of North Carolina, ECU's MPH program focuses on public health of rural and minority populations. Full-time students can complete the 45-semester hour curriculum in two years. Part-time students can complete the curriculum in two and a half to four years. Most courses are taught once per week in the late afternoon or evening to encourage working professionals to continue their education. The core curriculum, consistent with accreditation requirements of CEPH, integrates the applied and theoretical foundations of public health with those of medicine and other health-related disciplines. The MPH program received a five year accreditation by the CEPH in June 2007.

Core knowledge areas include epidemiology, health services administration, social and behavioral sciences, environmental health sciences, and research methodology. An internship and

professional paper add a learning dimension in applied research. These knowledge areas converge to provide each student with competencies directed toward solutions to health problems of rural and/or minority communities experiencing health disparities.

This interdisciplinary program, administratively located in the BSOM, encourages coursework in other ECU colleges and schools to promote integration, cooperation, and communication between medicine, public health, and the many disciplines that contribute to public health.

1.2 What is public health?

Public health consists of organized efforts to improve the health of communities. The operative components of this definition are that public health efforts are **organized and directed to communities** rather than to individuals. Public health practice does not rely on a specific body of knowledge and expertise; rather, a combination of science and social approaches is used. The definition of public health reflects its central goal – the reduction of disease and the improvement of health in the community. Acknowledging that there are multiple determinants of health and embracing the vision for health improvement articulated in **Healthy People 2010**, the practice of public health includes partnerships with the community, health and social services, clinical services, industry and business, academia, and the media.

1.3 Career opportunities in public health?

This MPH is a general degree, providing entry-level credentials and basic training for management and leadership positions in public health and the health care fields, one of the fastest growing fields of employment in the nation. The principal focus of the MPH at ECU will be on training a workforce for local and state public health agencies, hospitals and other health and human service providers in North Carolina.

Careers in public health have traditionally included physicians, epidemiologists, public health nurses, disease investigators, laboratory specialists, and sanitarians. These important careers are the backbone of the profession but there are many other careers in fields related to public health.

Other examples are: health educators; nutritionists and dietitians; injury control and prevention specialists; infection control specialists; radiation control technicians; dentists; dental hygienists; veterinarians; nurse practitioners; nurse midwives; pharmacists; occupational health and safety specialists; social workers; family planning and reproduction health specialists; mental health and substance abuse counselors; gerontologists and aging services specialists; vision care specialists; environmental health specialists; industrial hygienists; laboratory technicians; genetic counselors; emergency management specialists; disaster managers; health planners; public information and media specialists; legislative policy analysts; health department directors; business managers and management support staffs; hospital administrators; corporate medical directors; biostatisticians; vital statistic registrars; information technology specialists; and, researchers in many other health disciplines. People in each of these careers may have an MPH degree.

1.4 About Brody School of Medicine and East Carolina University

In 1974, the General Assembly of North Carolina appropriated the funds to establish a four-year medical school at East Carolina University. The legislature set forth a three-fold mission for the
8/11/2009

ECU School of Medicine: to increase the supply of primary care physicians to serve the state, to improve health status of citizens in eastern North Carolina, and to enhance the access of minority and disadvantaged students to a medical education.

Since 1977, when the first class of 28 students enrolled in the four-year School of Medicine, the institution has grown dramatically in its teaching, research and patient care roles. Today, in its partnership with [University Health Systems of Eastern Carolina](#) and regional physicians, the school is the educational centerpiece of one of North Carolina's largest and most productive academic medical centers. In 1999, it was renamed the Brody School of Medicine at East Carolina University, in recognition of the continuous support of the Brody family

East Carolina University, with over 25,000 students, is the third largest constituent institution of The University of North Carolina. It is a public doctoral university committed to meeting the educational needs of NC. ECU offers baccalaureate, masters, specialist, and doctoral degrees in the liberal arts, sciences and professional fields, including medicine and nursing. The campus is located in Greenville, North Carolina, a city of more than 80,000 and the hub of business, health care, and education in the eastern region of the state. Greenville is approximately a 75 minute drive to Raleigh, the state capital. The NC Atlantic Coast beaches can be reached in about three hours.

2.0 Description of the MPH Program

2.1 Mission and Objectives

The mission of the MPH Program is to educate and develop the skills of health professionals to improve health through prevention of disease and disability within rural and disadvantaged communities. Through education, research, service, advocacy, and emphasis on collaborative partnerships, the health of the people of NC and other regions with health disparities will be improved.

The objectives of MPH degree program are to prepare graduates with skills to:

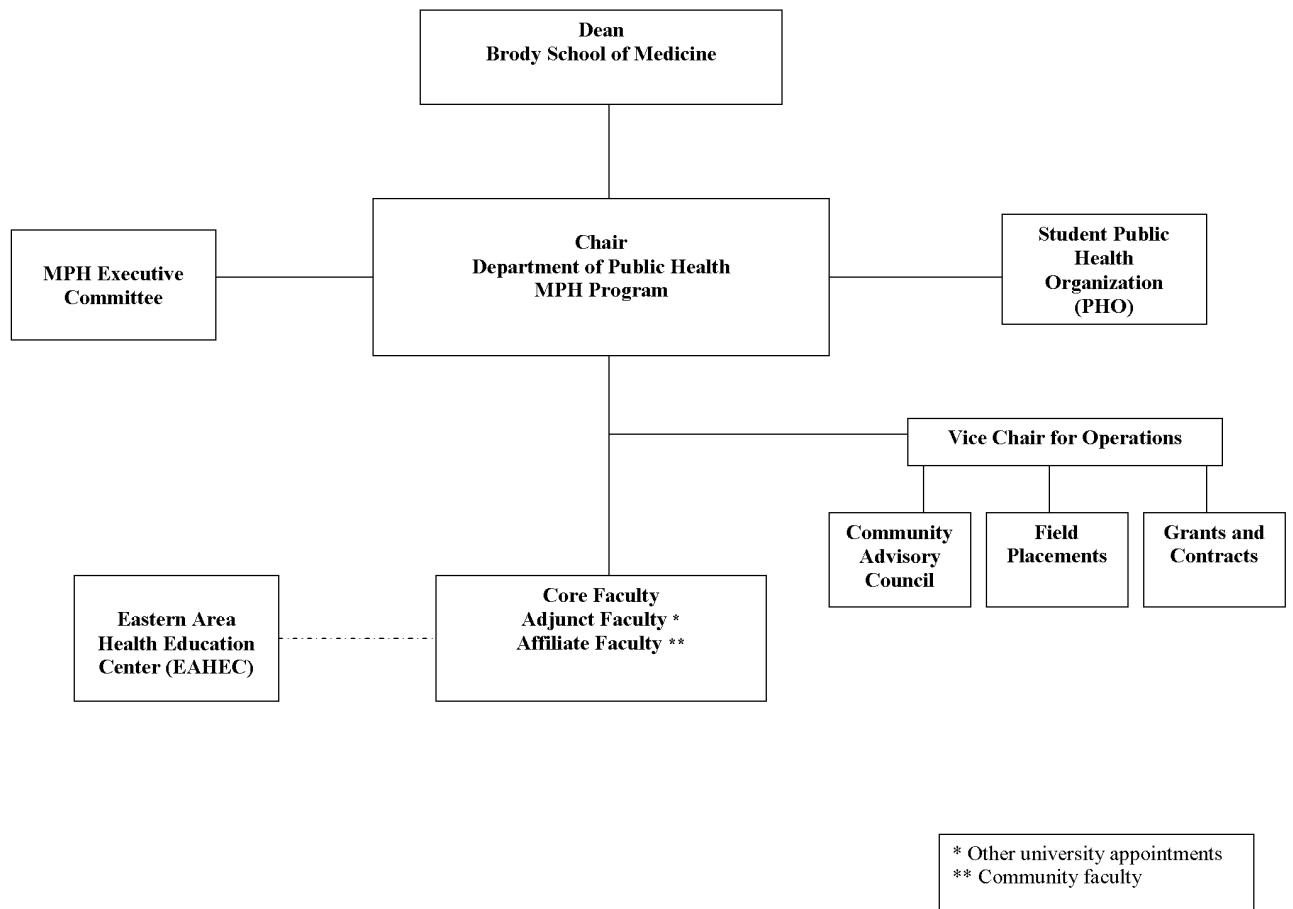
1. Monitor health status to identify existing and emergent community health problems.
2. Diagnose, investigate, and forecast health problems and health hazards in the community.
3. Plan and guide governmental response to natural disasters, natural disease outbreaks, or intentionally caused biological, chemical, or radiological threats to public health.
4. Inform, educate, and empower people to address public health issues.
5. Mobilize community partnerships to identify and solve public health problems.
6. Develop policies and plans that support individual and community health efforts.
7. Enforce laws and regulations that protect health and ensure safety.
8. Link people to needed personal health services and ensure the provision of health care when otherwise unavailable.
9. Assure a competent public health and personal health care workforce.
10. Evaluate the effectiveness, accessibility, and quality of personal and population-based health services.
11. Conduct research for new insights, knowledge, and innovative solutions to health problems.

Though the focus of the program is eastern North Carolina, these objectives are relevant to public health practice anywhere. They are consistent with the competencies for providing essential public health services identified by the Public Health Functions Project of the U.S. Public Health Service in *The Public Health Workforce: An Agenda for the 21st Century*.

2.2 Administration and Organization

The MPH degree program is administered by the Department of Public Health of the Brody School of Medicine at East Carolina University. The Program Director is also Chair of the Department of Public Health. The DPH was formed in July 2008 for the education of public health students, medical students and resident physicians. The DPH has active research, community service, and teaching responsibilities in the area of population-based prevention. The MPH Program was formerly within the Department of Family Medicine. **Exhibit 1** displays an organizational chart of the DPH within the BSOM administrative structure.

Exhibit 1. Organization of Department of Public Health, Brody School of Medicine, East Carolina University



Although this manual contains the most pertinent information students will need, students should also be familiar with the ECU Graduate School Bulletin. If conflicts of policy occur, policies of the ECU Graduate School take precedence. The DPH reserves the right to add, delete, or modify all provisions in this manual.

2.3 Curriculum

Forty-five (45) semester credit hours (s.c.h) are required for the MPH Degree. As presented in **Table 1**, curriculum requirements are 24 hours of required core courses, 9 hours of concentration-specific courses, an internship and professional paper, and two electives.

Table 1. Summary of Course Requirements by Credit Hours

Course Requirements	Number	Total credit
Core courses	8	24
Concentration-specific courses	3	9
Culminating courses (internship & professional paper I/II)	3	6
Electives	2	6
Total MPH program	16	45

Consistent with accreditation requirements, five substantive areas of knowledge are offered in the MPH program. Completion of eight core courses (24 s.c.h) is required by all students. Other required courses are discussed in Section 2.4 of this document. **Table 2** presents the required core courses by area of knowledge.

Table 2. Core Courses by Area of Knowledge and Credit Hours

Area of Knowledge	Core Courses	Credit
Health Services Administration	MPH 6000 Public Health Practice – I	3
	MPH 6002 Public Health Practice – II	3
	MPH/NURS 6035 Interdisciplinary Rural Health	3
Environmental Health	EHST/MPH 6010 Fundamentals of Environmental Health	3
Epidemiology	MPH 6011 Introduction to Epidemiology	3
	MPH 6020 Research Methods for Public Health	3
Social and Behavioral Sciences	MPH 6013 Behavioral Sciences and Health Education	3
Biostatistics	BIOS/MPH 7021 Biostatistics for Health Professionals I	3
Total credit		24

Students should select one of two concentrations after completion of their core courses.

- Analysis and Management
- Health Education and Promotion

Each concentration area, Analysis and Management or Health Education and Promotion, requires courses to be completed as part of the program. **Table 3** presents the required courses by concentration area or concentration-specific courses required to complete the program.

Table 3. Required Courses by Area of Concentration and Credit Hours

Concentration	Required Courses	Credits
Analysis and Management	MPH 6022 Epidemiology of Infectious Diseases	3
	MPH 6023 Epidemiology of Cancer	3
	HIMA 5060 Health Informatics (or COHE 6430, Database Systems in Health Care; COHE 6450, Decision Support in Health Care)	3
	2 Electives	6
		15+6=21
Health Education and Promotion	HLTH 6001 Foundations of Health Education and Promotion*	3
	HLTH 6110 Intervention Strategies for Health Education and Promotion	3
	HLTH 6600 Needs Assessment in Health Education and Promotion	3
	2 Electives	6
		15 + 6 =21
Other Required for Courses Each Concentration	MPH 6903 Internship	3
	MPH 6991 MPH Professional Paper Proposal	2
	MPH 6992 MPH Professional Paper	1

*For students with a Health Education undergraduate degree, MPH 6027 is required as a substitute for HLTH 6001 (see Table 4).

Three of the concentration-specific courses are typically completed during the fall and spring semesters of year two. Courses with sections ending in 001 are face-to-face classes and 601 are distance education (DE) classes. Some elective courses may fulfill concentration requirements if a concentration-specific course is not offered. The advisor must approve alternative courses to fulfill concentration requirements, and/or consent of the instructor, as provided in the ECU Graduate Catalog or online registration process. Registration, course offerings for semester, sections, enrollment limitations, and room/time, appear in the online BANNER system, available to the student once an ECU 'pirateID' is assigned. The MPH Student Coordinator registers student for courses that require permission of the instructor, once the instructor approves.

In addition to concentration-specific courses, a student must take six s.c.h of electives. An elective is any graduate level university course (6000 or above) approved by the student's faculty advisor for which the instructor grants permission to enroll. For example, some classes may require a pre-requisite. If a student has not taken the pre-requisite, permission from the instructor must be obtained and communicated to the advisor. **Table 4** lists courses that may fulfill an elective. Please check ONE-STOP to identify which semester the course will be taught. Additional biostatistics courses are encouraged for students interested in pursuing a terminal degree in

Epidemiology or Health Administration. The ECU Graduate Catalog can be found at the following link: <http://www.ecu.edu/cs-acad/grcat/coursespublichealth.cfm> .

Table 4. Examples of Courses to Fulfill Elective Requirements, ECU Graduate Catalog

MPH Courses	MPH 6005: African-American Health MPH 6007: Medical Anthropology and Public Health: A Global Perspective MPH 6008: Ethnic Health and Health Disparities MPH 6025: Delivery of Health Services MPH 6027: Allied Mixed Methods Research MPH 6670: Maternal and Child Health
Adult Education	ADED 6307: Proposal Writing for Grants and Contracts
Biostatistics	BIOS 7022: Biostatistics for Health Professional II BIOS 7501: Experimental Design BIOS 7550: Applied Multivariate Analysis
Community Health	COHE 6000: Health Care Systems and Problems COHE 6600: Management of Health Care Operations COHE 6620: Health Care Strategic Management
Communications	COMM 6210: Media and Health COMM 6221: Intercultural Communication in a Health Context COMM 6224: Communication and Health Organizations COMM 6230: Introduction to Health Communication
Health Information, Management and Information	HIMA 6410: Electronic Health Records
Health Education and Promotion	HLTH 6600: Needs Assessment in Health Education and Promotion HLTH 6700: Qualitative Research and Evaluation Methods HLTH 6900: Managing Health Education and Promotion Programs HLTH 7100: Qualitative Research: Analysis and Interpretation
Public Administration	PADM 6410: Health Policy Analysis PADM 6400: Health Policy

At the beginning of the program, students are expected to meet with their advisor to map out a course plan, based on the student's anticipated graduation date. **Exhibit 2** shows an example of curriculum taken to achieve 45 s.c.h for a full-time MPH student wishing to complete the program in two years, including summer enrollment. Medical Students and residents arrange a slightly different degree plan to achieve 45 credit hours. Non-matriculating students must obtain permission to enroll in Introduction to Epidemiology (MPH 6011) for any Fall semester.

Exhibit 2. MPH Sample Degree Plan for Two-Year Full Time Student

	Course	Dept. Number	Credit Hours
Fall, yr 1	Public Health Practice	MPH 6000	3
	Epidemiology	MPH 6011	3
	Interdisciplinary Rural Health	MPH 6035	3
	*Elective		3
			<i>TOTAL: 9 or 12</i>
Spring, yr 1	Environmental Health	MPH/EHST 6010	3
	Biostatistics	BIOS 7021	3
	Advanced Public Health Practice	MPH 6002	3
	Research Methods (prior to 6991)	MPH 6020	3
			<i>TOTAL: 12</i>
S.S. 1/2 WEEK	Behavioral Health (in person)	MPH 6013	3
	Internship	MPH 6903	3
			<i>TOTAL: 6</i>
			YR 1 Total = 30
Fall, yr 2	Professional Paper I	MPH 6991	2
	*Concentration course		3
	*Concentration course		3
			<i>TOTAL: 8</i>
Spring, yr 2	*Elective		3
	*Concentration course		3
	Professional Paper II	MPH 6992	1
			<i>TOTAL: 7</i>
			<i>TOTAL: 45</i>

*see Table 4

2.4 Other Requirements

Culminating experiences for MPH students consist of a field experience or internship and MPH professional paper. Each is discussed below.

An internship (3 s.c.h) is required of all students. Time and duration of internships depend upon the student's concentration. At a minimum, the internship will be 240 hours for three s.c.h. .

The internship may be waived if the student has had extensive experience in public health with the approval of the MPH program director.

The field experience or internship offers students the opportunity to integrate and demonstrate the application of academic knowledge with learned public health core competencies in a professional setting through exposure to one or more core functions of essential public health services.

A professional paper (3 s.c.h) is required of all students and serves as an applied-learning experience. The professional paper will typically describe a public health action, intervention, or an increase in knowledge useful to public health practice that has resulted from the student's internship experience, professional employment, or research. The professional paper is completed over a two semester sequence:

- MPH 6991 2 s.c.h. consists of developing and writing the proposal or protocol, and
- MPH 6992 1 s.c.h. consists conducting/completing the analysis, writing, and presenting the work.

Professional paper guidelines and student example can be found under the link "Professional Paper" from the MPH homepage.

Grades required for graduation

A "B" average is required for graduation. Any student who receives a final grade of "C" or lower on courses totaling in excess of 6 semester hours will have his or her program terminated.

A student cannot graduate with "Incomplete" on the ECU Graduate Transcript. A student should re-enroll to "Complete" the class, convert the Incomplete to Complete, and receive a grade. A student has one calendar year to replace the "Incomplete." For example, during completion of the MPH Professional Paper, MPH 6992, a student could be delayed in IRB approval, data collection, and other aspects of implementing research. For this reason, a student may take an "Incomplete" in MPH 6992 for that semester. Then, the student should register for another semester, pay tuition, and enroll in MPH 6992 to complete the course if their timeframe for graduation coincides with the end of the semester after they have received "Complete". Details of this process can be discussed with the advisor. A student must be registered to receive a grade and be a registered student in the semester in which the 45 credits are completed.

In most circumstances, students may "walk" in the graduation ceremony if a student has completed 44 credits before graduation and will have their paper and MPH 6992 completed by the end of the next consecutive semester. In certain circumstances student may "walk" in graduation if they have completed all but several credits with the permission of the MPH Program Director. Students in this category shall request their professional paper instructor to inform the MPH Program Director that all requirements will be met by the completion of the next consecutive semester. The student must be registered to submit the paper to be graded.

Requirements below are consistent with the ECU Graduate Division, including:

- a graduate summary completed and signed by the program director
- a completed graduate application

Please see the ECU Graduate Division website for further details.

Competencies

Consistent with objectives of the MPH program presented earlier, students are expected to attain 20 basic public health competencies (**Table 5**). Competencies are measured at several points throughout the curriculum, such as course work, internship and professional paper.

Table 5. 20 Competencies of the Association of Schools of Public Health
Provided by MPH Core Coursework

Competency	ASPH Description
BIOSTATISTICS	Apply descriptive techniques commonly used to summarize public health data
	Interpret results of statistical analysis found in public health studies
	Use vital statistics and other public health records in the description of population health characteristics and in public health research and evaluation
	Comprehend basic ethical and legal principles pertaining to the collection, maintenance, use and dissemination of epidemiological data
	Apply common statistical methods for inference
COMMUNICATION	Develop cogent and persuasive written materials regarding public health topics
	Deliver oral presentations using recognized criteria for effective information dissemination
	Demonstrate sensitivity to varied cultural, ethnic, and socioeconomic backgrounds of individuals and groups including: education, health, literacy, race, gender, age, profession, political preferences, health conditions, religion/spirituality, place of origin, sexual orientation and lifestyle
ENVIRONMENTAL HEALTH	Specify approaches for assessing, preventing and controlling environmental hazards that pose risks to human health and safety
	Describe a public health problem in terms of magnitude, person, time and place
EPIDEMIOLOGY	Calculate basic epidemiology measures
	Recognize the principles and limitations of public health screening programs
ETHICS	Apply evidence-based concepts in public health decision-making
HEALTH POLICY	Identify the main components and issues of the organization, financing and delivery of health services in the US
	Use the principles of program planning, development, budgeting, management, and evaluation in organizational and community initiatives
EVALUATION	Prepare proposals for funding from internal and external sources
BEHAVIORAL SCIENCES	Identify basic theories, concepts and models from a range of social and behavioral disciplines that are used in public health research and practice
	Describe the role of social and community factors in both the onset and solution of public health problems
	Use evidence-based approaches in the development and evaluation of social and behavioral science interventions
	Describe steps and procedures for the planning, implementation and evaluation of public health programs, policies and interventions

Student Code of Conduct

Integrity of MPH Program, students, and faculty is extremely important. All students are expected to abide by the ECU Code of Student Conduct. Plagiarism, cheating, and other misconduct are not expected among our students and will be dealt with according to the Code of Conduct. Details of Brody School of Medicine at East Carolina University MPH Code of Student Conduct can be found in MPH Program web page at <http://www.ecu.edu/mph/>.

2.5 Application and Admission

Students applications are considered for the MPH Program for the Fall Semester. Spring admissions can be considered in certain situations but the major entry point for the ECU MPH Program is the Fall Semester.

Application Deadlines

Deadlines for submission of applications are April 15 for fall semester and October 15 for spring semester. Before applying for Spring admission, please confirm with the MPH Student Services Coordinator that admissions for the Spring semester are planned. Based on the total number of students enrolled, Spring admissions may be restricted.

Students may seek to take coursework as non-matriculating students. Non-degree seeking students may be permitted to register up to two weeks before classes begin. Non-matriculating students must follow the guidance of the ECU Graduate School for non-degree seeking enrollment. Non-matriculating students may take up to 12 credit hours in the MPH program. Enrolling as a non-matriculating student does not guarantee a student will be accepted to the program.

Admission Requirements

Admission to the Master of Public Health degree program requires the student to meet the minimum admission requirements for graduate study as established by the ECU Graduate School and university, as well as, the following requirements established by the Master of Public Health Program.

1. Submission of one official transcript from every college or university at which applicant completed seven or more s.c.h of coursework.
2. An acceptable score on the Graduate Record Examination (GRE) taken within the past five years. The entrance exam may be waived for applicants with advanced degrees upon the recommendation of the graduate director. The Medical College Admissions Test (MCAT) may be substituted in lieu of the GRE.
3. Three letters of recommendation from persons familiar with the applicant's academic and professional capabilities, achievements, work experience, and/or personal qualities.
4. A resume or curriculum vitae.
5. A short essay (less than 600 words) explaining why the applicant wishes to pursue the MPH degree and how her/his future career goals are related to the degree.

An interview is not required for admissions but may be requested at the discretion of the Program Director. Please see the

MPH-MD Dual Degree Program

The MPH degree requires 45 s.h. for physicians. Medical students may complete the program by taking MPH course work during a leave of absence between the second and third year of medical school as well as during summer vacations. A leave of absence to pursue the MPH degree may be granted to students in the Brody School of Medicine who have been accepted into the MPH program, have completed Step I of the USMLE, and are in good standing in the medical school. Physicians and residents apply through the ECU Graduate School.

Qualifications Required for Admission

To qualify for regular admission to the ECU Graduate School, an applicant must have a overall undergraduate GPA of 3.0, and a satisfactory score on the required standardized test (GRE or MCAT), minimum of 1000 on GRE.

Acceptance into the Master of Public Health Program is determined by the graduate faculty based on evaluation of the applicant's record of scholarship, standardized test scores, professional experience and accomplishments, the writing skills displayed by the Statement of Intent, 3 references, and personal interview (if one occurred). Verbal, written, and quantitative skills are required of graduate students entering the MPH program. The ability to use computers and standard software in basic public health applications is a requirement for graduate work and proficiency is the responsibility of the student. The faculty of the MPH program establishes guidelines for admissions into the MPH Program. Graduates are admitted by a formal letter from the ECU Graduate School.

Transfer of Credits from other programs

Requests for transfer of courses taken prior to enrollment must be made at the time of admission and be approved by the director of the MPH program and the dean of the Graduate School.

How to Apply

Applicants apply to the MPH program by completing a "self-managed" application to the ECU Graduate School. The application form must be submitted electronically. The application and instructions can be downloaded from the graduate school website at <http://www.ecu.edu/cs-acad/gradschool/results.cfm?id=125>. The application deadline can be found at <http://www.research2.ecu.edu/Gradschool/Application%20Deadlines.htm>.

If applicant cannot download and print the paper forms, these forms may be obtained from the graduate school along with the *Graduate School Program Information* booklet. Applicant may obtain forms in person by visiting the Graduate School in Ragsdale Hall, request one be sent to you by telephone (252) 328-6012, or by e-mail at gradschool@ecu.edu.

All applicants to the program should submit the following to the ECU **graduate school**:

- **Application and fees (see link above)**
- **Transcripts**
- **Test Scores**

Mail to: ECU Graduate School
131 Ragsdale Hall
East Carolina University
Greenville, NC 27858

Applicants should then submit the following information **directly to the Department of Public Health**:

- **3 letters of recommendation**
- **Letter of intent (essay)**
- **Resume**

Mail to: Student Services Coordinator
 Department of Public Health
 Brody School of Medicine
 Hardy Building
 600 Moye Boulevard, mail stop 660
 Greenville, NC 27834

Equal Opportunity Policy of East Carolina University

East Carolina University is committed to equality of opportunity and does not discriminate against applicants, students, or employees based on race, religion, color, creed, national origin, sex, age, sexual orientation, or disability. Please see details at <http://www.ecu.edu/oie/>.

2.6 Financial Costs of Program

Because the duration of completion of the program will differ for each student, the financial commitment by semester will differ for each student. Costs are calculated based on the number of credit hours enrolled during one semester. Summer session is considered a separate semester for cost purposes. **Table 6** presents an example, based on 2008-2009 academic year costs, for the expected expenditures for tuition and fees. Costs will vary depending on the credit hours enrolled. These costs do not include enrollment in summer session.

Table 6. Estimated Costs of Tuition and Fees by Credit Hours by Annual and Semester (estimated 2009)

<u>Tuition and Fees</u>	Two semesters Annual, full time student	Per semester (Fall or Spring)			
		9+ hours	6-8 hours	3-5 hours	1-2 hours
Resident Tuition	\$ 2,816.00	1,408.00	1,055.99	704.00	351.99
Non-Resident Tuition	13,132.00	6,566.00	4,924.49	3,283.00	1,641.49
MBA/MSA Tuition	MBA/MSA classes are assessed an additional \$60.00 per credit hour.				
University Fees	1,331.00	665.50	499.13	332.75	166.38
Educational/Technology Fee	137.00	68.50	51.38	34.25	17.13
Health Service Fee	200.00	100.00	75.00	50.00	25.00
Total (NC Resident)	\$ 4,484.00	\$ 2,242.00	\$ 1,681.50	\$ 1,121.00	\$ 560.50
Total (Non-Resident)	\$14,800.00	\$ 7,400.00	\$ 5,550.00	\$ 3,700.00	\$ 1,850.00

Table 7 shows an example of expenses that full-time students might expect per semester, paying either in-state or out-of-state tuition.

Table 7. Summary of Major Categories of Expenses by Semester and Resident Status

	In-state	Out-of-state
Tuition and fees	\$2,242	\$7,400
Books and supplies	400	400
Living expenses	4,000	4,000
Personal expenses	<u>1,800</u>	<u>1,800</u>
Estimated Total per semester	\$8,442	\$13,600

Tuition and fees change yearly. For the most current listing of tuition and fees, visit the cashier's office website: http://www.ecu.edu/financial_serv/cashier/tufee.cfm

2.7 Financial Aid, Assistantships, and Remissions

While graduate education is financed primarily by personal savings and loans, the university provides limited financial support for graduate study through several mechanisms.

- Graduate assistantship
- Work Study
- Out-of-State tuition remission

Any student gaining regular admission is eligible for consideration of a *graduate assistantship*. These awards provide a stipend of approximately \$3,750 per semester. The number of awards vary by year and semester. Awards require that the student be full-time (enrolled in 9 semester hours or more) and that the student provides 20 hours per week of service to the program. Service is usually assisting faculty in teaching or research, either of which enriches the learning experience. Graduate assistantships are allotted to the program by the ECU Graduate School and allocated to students by the Program Director.

Information about financial aid can be found at http://www.ecu.edu/financial_serv/. Work-study assignments in the DPH are available for qualified students. Check with the MPH student services coordinator and the Office of Financial Aid for more information. A limited number of *out-of-state tuition remissions* are available to cover the out-of-state portion of a student's tuition. The remissions are highly competitive and awarded by the MPH program. The minimum requirements are 3.0 overall GPA or a 3.0 GPA in the senior year, and an acceptable score on the GRE. Students are strongly advised to apply to the program as early as possible to be considered. Certain *members of the armed services* and their dependent relatives, as well as *public school teachers* may be eligible for out-of-state tuition remissions.

2.8 MPH Program Director and Faculty

Lloyd F. Novick, MD, MPH is the MPH Program Director and Chair of the Department of Public Health. N. Ruth Little, MPH is Vice Chair for Operations. Core MPH faculty, adjunct and community-affiliated faculty are listed below in **Tables 8 and 9**, respectively.

Table 8. Core Faculty by Rank, and Teaching Duties

Name	Rank	Teaching
Eric Bailey, PhD, MPH	Professor	Health Disparities, Global Public Health, African American Health.
Judy Bernhardt, PhD, MPH	Professor	Rural Health
Jeffrey Bethel, PhD	Asst. Professor	Infectious Epidemiology, Disparities
Doyle 'Skip' Cummings, PharmD	Professor	Rural Health
Stephanie Jilcott, PhD	Asst. Professor	Nutrition and Research Methods
Hans Johnson, EdD, MS	Asst. Professor	Health Education and Promotion
Suzanne Lazorick, MD, MPH	Asst. Professor	Maternal and Child Health
C. Suzanne Lea, PhD, MPH	Assoc. Professor	Cancer Epidemiology, Methods
N. Ruth Little, MPH	Asst. Professor	Field Activities, Internship
Chris Mansfield, PhD, MS	Professor	Research Methods
Justin B. Moore, PhD, MS	Asst. Professor	Behavioral Health, Physical Activity
Lloyd F. Novick, MD, MPH	Professor	Public Health Practice
Kristina Simeonsson, MD, MSPH	Asst. Professor	Public Health Practice

Table 9. Adjunct Faculty in the ECU MPH Program

Name	Adjunct Rank	School/College	Teaching
Alice Anderson, MS, PhD	Asst. Professor	HHP	Environmental Health
Alta Andrews, MPH, DrPH	Professor	Nursing	Rural Health
Catherine Sullivan, MPH	Clin. Asst. Professor	Medicine	Nutrition
Craig Becker, PhD	Asst. Professor	HHP	Health Education
Dan Sprau, MS, DrPH	Assoc. Professor	HHP	Environmental Health
David Collier, MD, PhD	Asst. Professor	Medicine	Pediatrics
David Weismiller, MS, MD	Assoc. Professor	Medicine	Epidemiology
David White, MS, EdD	Professor	HHP	Health Education
Debbie Ramey, BS, MAED	Asst. Professor	AHEC	Continuing Education
Janet P. Moye PhD, RN	Asst. Professor	Nursing	Healthcare Delivery
Jim Mitchell, PhD	Professor	Sociology	Geriatrics
Jim Wilson, PhD	Asst. Professor	Medicine	Healthcare Data
Kathryn Kolasa, PhD	Professor	Medicine	Applied Nutrition
Katrina DuBose, MS, PhD	Asst. Professor	HHP	Physical Activity
Kenneth DeVille, PhD, JD	Professor	Medicine	Law
Linda Kean, PhD	Assoc. Professor	Communication	Communications
Maria Clay, PhD, MAEd	Assoc. Professor	Medicine	Rural Health
Mary Glascoff, MSN, PhD	Assoc. Professor	HHP	Health Education
Pamela Larsen, FNP, DNSC	Professor	Medicine	Child Health
Paul Vos, PhD	Professor, Chair	Allied Health	Biostatistics
Robert Barnes, MPA	Assoc. Professor	HHP	Health Education
Stephen Willis, MD	Professor	AHEC	
Suzanne Orr, MA, PhD	Assoc. Professor	HHP	Health Education
Sylvie Henning, MA, PhD	Professor	Lib. Arts	International Health
Thomas Irons, MD	Professor	Medicine	Pediatrics
Wayne Cascio, MD	Professor	Medicine	Cardiology
Xiaoming Zeng, PhD	Asst. Professor	Allied Health	Biostatistics

Advisory Board

The MPH program has a diverse external advisory board with exceptional experience to draw on for wisdom and insight. It is composed of local, state, and national public health practitioners as well as faculty and administrators of other academic public health programs.

2.9 Frequently Asked Questions about the ECU MPH program at the Brody School of Medicine.

- **How many credit hours are required for graduation?** 45 semester credit hours.
- **Are all students required to complete an internship in public health?** Yes. The internship is an integral component of the MPH Program. Students with substantial previous field experience may petition to be exempt from the internship requirement or a portion thereof. Exemption is at the discretion of the MPH Program Director.
- **How long will it take to complete the degree requirements?** It depends on whether you pursue this on a full-time basis or part-time. Students can complete the program in 2 to 4 years.
- **Can I transfer courses from another master of public health program?** With approval of the program and Dean of the Graduate School, up to 12 credit hours may be transferred, depending on how well a course matches the ECU MPH course substituted.
- **Can I transfer courses from another graduate program?** Yes. With approval of the program and Dean of the Graduate School, up to 12 credit hours may be transferred. The 12-hour limit applies to all transfers or inter-institutional electives.
- **Are courses offered in the evening?** Most courses are offered in the late afternoon or early evening once per week for three hours.
- **Can I take courses on-line?** Many courses are available in distance education format. Courses with sections ending in 601 are online courses. Courses with section 001 are face-to-face courses.
- **How do I apply?** Through an application to the ECU graduate school at <http://www.ecu.edu/gradschool>. Mail 3 Recommendations, resume, and Statement of Intent directly to MPH Program office.
- **What is the application deadline?** Deadlines for submission of admission applications are April 15 for fall semester and October 15 for spring semester. Prospective students are strongly urged to apply well before the deadline. Late admission considered based on program capacity.
- **What is the program code I should put on the application in item 10?** Program code 159.
- **Are students accepted only for fall admission?** Some students may be accepted for Spring enrollment. The occurrence of Spring enrollment depends on the total number of students enrolled in the previous fall and expected number of graduates.
- **What entrance exams and scores are required?** The Graduate Record Exam (GRE) is used as one gauge of an applicant's ability to complete the program. MCAT may be substituted for the GRE. Acceptance into the program is based on evaluation of the applicant's record of scholarship, standardized test scores, professional experience and accomplishments, the required essay, references, and personal interview (optional). Until the program gains experience sufficient to relate students' successful completion of the program to entrance exam scores, the minimum requirements of the ECU Graduate School will be followed, a minimum GRE score of 1000 and a GPA of 3.0. MCAT scores can be submitted in lieu of the GRE.
- **Must I take the Graduate Record Exam if I have already completed a graduate degree?** It depends on what the graduate program was, how recently you completed it, and what your grades in the graduate program were. If you are interested in waiving the GRE, you must receive written consent from the MPH Program Director **BEFORE** the application deadline.
- **How do I find more about the Graduate Record Exam (GRE)?** Go to www.gre.com

- **Is there any financial aid?** Financial Aid is limited. See the information at <http://www.ecu.edu/financial/>
- **Is the program accredited?** ECU is accredited by the Southern Association of Colleges. The MPH Program was fully accredited in 2007 by Council on Education for Public Health.

Contact information

Student Services Coordinator
Brody School of Medicine at East Carolina University
Department of Public Health
Hardy Building, 1709 W. Sixth Street (FedEX), Greenville, NC 27834
Tel: (252) 744-4079, Fax: (252) 744-4008
Email: mph@ecu.edu

