

# **Program Manual**

**Master of Public Health Program**

**Department of Public Health**

**Brody School of Medicine**

**East Carolina University**

**Hardy Building  
600 Moye Blvd.  
Greenville, NC 27834**

## Table of Contents

<b>EXECUTIVE SUMMARY .....</b>	<b>3</b>
<b>1.0 BACKGROUND.....</b>	<b>3</b>
<b>1.1 ABOUT THE MPH PROGRAM.....</b>	<b>3</b>
<b>1.2 WHAT IS PUBLIC HEALTH? .....</b>	<b>4</b>
<b>1.3 CAREER OPPORTUNITIES IN PUBLIC HEALTH? .....</b>	<b>4</b>
<b>1.4 ABOUT EAST CAROLINA UNIVERSITY .....</b>	<b>4</b>
<b>2.0 DESCRIPTION OF THE MPH PROGRAM .....</b>	<b>5</b>
<b>2.1 MISSION AND OBJECTIVES .....</b>	<b>5</b>
<b>2.2 ADMINISTRATION AND ORGANIZATION .....</b>	<b>6</b>
<b>2.3 CURRICULUM.....</b>	<b>7</b>
<b>2.4 OTHER REQUIREMENTS.....</b>	<b>10</b>
<b>2.5 FINANCIAL COSTS OF PROGRAM .....</b>	<b>11</b>
<b>2.6 FINANCIAL AID, ASSISTANTSHIPS, GRANTS.....</b>	<b>12</b>
<b>2.7 PROGRAM DIRECTOR AND FACULTY.....</b>	<b>13</b>
<b>2.8 APPLICATION AND ADMISSION .....</b>	<b>14</b>
<b>2.9 FREQUENTLY ASKED QUESTIONS.....</b>	<b>17</b>

### List of Tables

- Table 1.** Summary of Course Requirements by Credit Hours  
**Table 2.** Core Courses by Area of Knowledge and Credit Hours  
**Table 3.** Required Courses by Area of Concentration and Credit Hours  
**Table 4.** Example of Courses to Fulfill Elective Course Requirement  
**Table 5.** Concentration-Specific Competencies  
**Table 6.** Estimated Costs of Tuition and Fees by Credit Hours by Annual and Semester (estimated 2009)  
**Table 7.** Summary of Major Categories of Expenses by Semester and Resident Status  
**Table 8.** Name, Rank, and Teaching Duties of Core Faculty in the ECU MPH Program  
**Table 9.** Adjunct Faculty in the ECU MPH Program  
**Table 10.** Community-Based Affiliate Faculty

### List of Exhibits

- Exhibit 1.** Organization of Department of Public Health, Brody School of Medicine, East Carolina University, October 2008  
**Exhibit 2.** MPH Sample Degree Plan for Two-year Full Time Student
- Appendix 1** Public Health Competencies by 5 Areas of Knowledge at Degree Completion

---

## Executive Summary

This manual is intended for use by students as they consider application for admission, selection of their specific curriculum, and completion of requirements to become candidates for the Masters of Public Health (MPH) degree. This manual is also a compilation of philosophy, policies, and procedures of the MPH Program within the Department of Public Health (DPH), Brody School of Medicine (BSOM) at East Carolina University (ECU). It is a supplement to policies, procedures, and requirements of the ECU Graduate School. Admissions criteria and estimated program costs are included in this manual.

Although this manual contains the most pertinent information students will need, students should also be familiar with the ECU Graduate School Bulletin. If conflicts of policy occur, policies of the ECU Graduate School take precedence. Faculty and staff of the program are readily available to students for guidance. Each student, however, must assume responsibility for monitoring his or her progress toward achieving the degree. The DPH reserves the right to add, delete, or modify all provisions in this manual. Additional program information can be found in the program page at <http://www.ecu.edu/mph/>.

### 1.0. Background

#### 1.1 About the MPH program

Health status indicators in eastern North Carolina (NC) are among the worst in the nation. The region's diverse population is predominantly rural and disproportionately poor. Meaningful improvement in the health status of the region's population requires a transformation in the practice of public health and medicine emphasizing prevention, health promotion, strategic partnerships, and greater efficiency. Training of public health professionals will provide leadership to implement this transformation.

ECU's practice-based program is specifically tailored to individuals working in public health, medicine, and health or health-related agencies without formal training in public health. Individuals with other academic or professional backgrounds with an interest in public health are also encouraged to apply. Courses are offered at times and in formats convenient to working professionals. A dual MD-MPH degree is available. The program incorporates practice-based teaching, competency-based learning, and evidence-based education with emphasis on field placement and communication skills.

The MPH degree program admitted its inaugural class in fall 2003. This interdisciplinary program prepares professionals to provide public health leadership in a variety of health and human service settings. Consistent with the public health needs of North Carolina, ECU's MPH program focuses on public health of rural and minority populations. Full-time students can complete the 45-semester hour curriculum in two years. Part-time students can complete the curriculum in two and a half to four years. Most courses are taught once per week in the late afternoon or evening to encourage working professionals to continue their education. The core curriculum, consistent with accreditation requirements of the Council on Education for Public Health (CEPH), integrates the applied and theoretical foundations of public health with those of medicine and other health-related disciplines. The MPH program received a five year accreditation by the CEPH in June 2007.

Core knowledge areas include epidemiology, health services administration, social and behavioral sciences, environmental health sciences, and research methodology. An internship and

professional paper add a learning dimension in applied research. These knowledge areas converge to provide each student with competencies directed toward solutions to health problems of rural and/or minority communities experiencing health disparities.

This interdisciplinary program, administratively located in the BSOM, encourages coursework in other ECU colleges and schools to promote integration, cooperation, and communication between medicine, public health, and the many disciplines that contribute to public health.

## 1.2 What is public health?

Public health consists of organized efforts to improve the health of communities. The operative components of this definition are that public health efforts are **organized and directed to communities** rather than to individuals. Public health practice does not rely on a specific body of knowledge and expertise; rather, a combination of science and social approaches is used. The definition of public health reflects its central goal – the reduction of disease and the improvement of health in the community. Acknowledging that there are multiple determinants of health and embracing the vision for health improvement articulated in **Healthy People 2010**, the practice of public health includes partnerships with the community, health and social services, clinical services, industry and business, academia, and the media.

## 1.3 Career opportunities in public health?

This MPH is a general degree, providing entry-level credentials and basic training for management and leadership positions in public health and the health care fields, one of the fastest growing fields of employment in the nation. The principal focus of the MPH at ECU will be on training a workforce for local and state public health agencies, hospitals and other health and human service providers in North Carolina.

Careers in public health have traditionally included physicians, epidemiologists, public health nurses, disease investigators, laboratory specialists, and sanitarians. These important careers are the backbone of the profession but there are many other careers in fields related to public health.

Other examples are: health educators; nutritionists and dietitians; injury control and prevention specialists; infection control specialists; radiation control technicians; dentists; dental hygienists; veterinarians; nurse practitioners; nurse midwives; pharmacists; occupational health and safety specialists; social workers; family planning and reproduction health specialists; mental health and substance abuse counselors; gerontologists and aging services specialists; vision care specialists; environmental health specialists; industrial hygienists; laboratory technicians; genetic counselors; emergency management specialists; disaster managers; health planners; public information and media specialists; legislative policy analysts; health department directors; business managers and management support staffs; hospital administrators; corporate medical directors; biostatisticians; vital statistic registrars; information technology specialists; and, researchers in many other health disciplines. People in each of these careers may have an MPH degree.

## 1.4 About Brody School of Medicine and East Carolina University

In 1974, the General Assembly of North Carolina appropriated the funds to establish a four-year medical school at East Carolina University. The legislature set forth a three-fold mission for the 11/10/2008

ECU School of Medicine: to increase the supply of primary care physicians to serve the state, to improve health status of citizens in eastern North Carolina, and to enhance the access of minority and disadvantaged students to a medical education.

Since 1977, when the first class of 28 students enrolled in the four-year School of Medicine, the institution has grown dramatically in its teaching, research and patient care roles. Today, in its partnership with [University Health Systems of Eastern Carolina](#) and regional physicians, the school is the educational centerpiece of one of North Carolina's largest and most productive academic medical centers. In 1999, it was renamed the Brody School of Medicine at East Carolina University, in recognition of the continuous support of the Brody family

East Carolina University, with over 25,000 students, is the third largest constituent institution of The University of North Carolina. It is a public doctoral university committed to meeting the educational needs of NC. ECU offers baccalaureate, masters, specialist, and doctoral degrees in the liberal arts, sciences and professional fields, including medicine and nursing. The campus is located in Greenville, North Carolina, a city of more than 76,000 and the hub of business, health care, and education in the eastern region of the state. Greenville is approximately a 75 minute drive to Raleigh, the state capital. The NC Atlantic Coast beaches can be reached in less than two hours.

## 2.0 Description of the MPH Program

### 2.1 Mission and Objectives

The mission of the MPH Program is to educate and develop the skills of health professionals to improve health through prevention of disease and disability within rural and disadvantaged communities. Through education, research, service, advocacy, and emphasis on collaborative partnerships, the health of the people of NC and other regions with health disparities will be improved.

The objectives of MPH degree program are to prepare graduates with skills to:

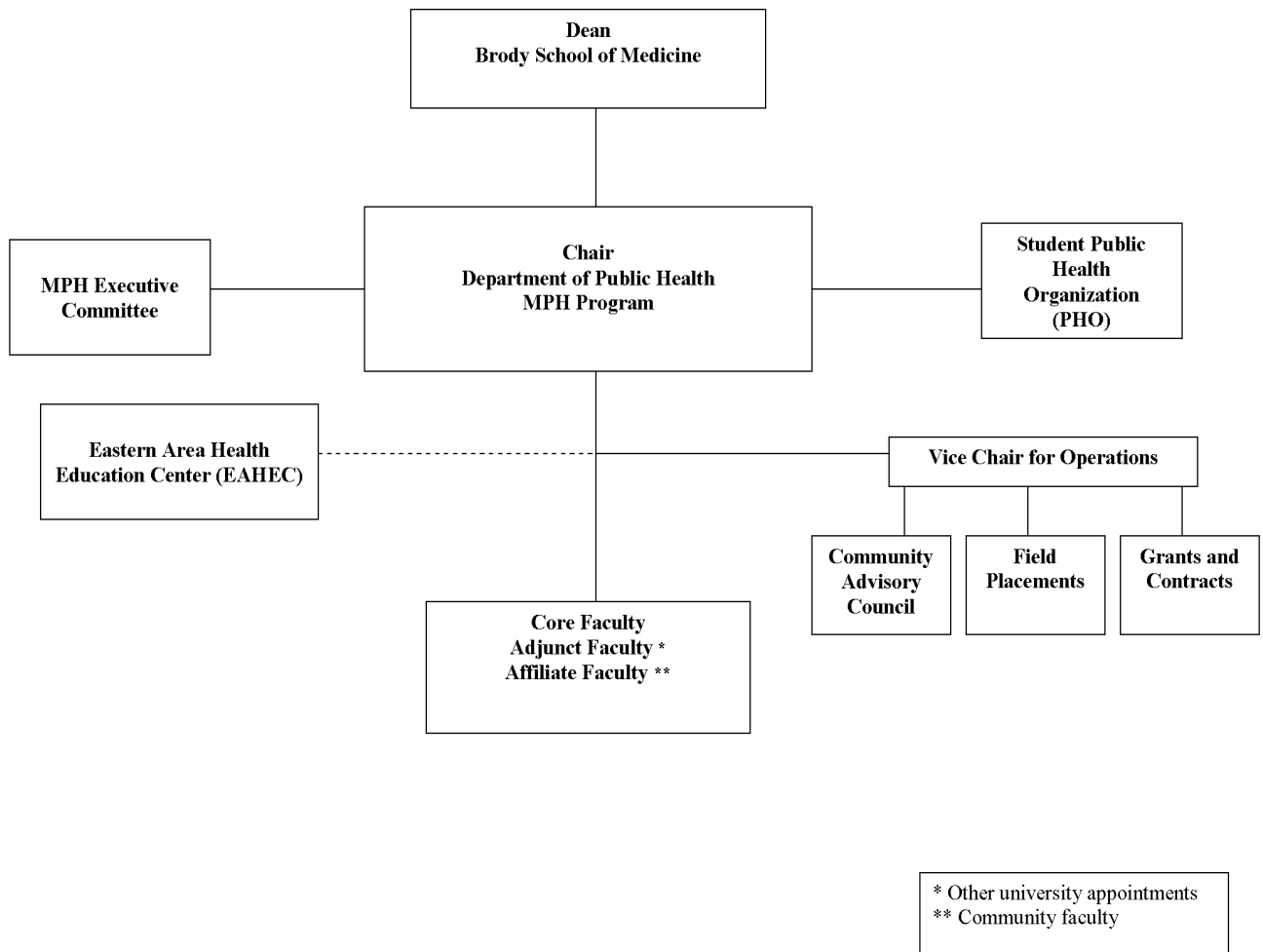
1. Monitor health status to identify existing and emergent community health problems.
2. Diagnose, investigate, and forecast health problems and health hazards in the community.
3. Plan and guide governmental response to natural disasters, natural disease outbreaks, or intentionally caused biological, chemical, or radiological threats to public health.
4. Inform, educate, and empower people to address public health issues.
5. Mobilize community partnerships to identify and solve public health problems.
6. Develop policies and plans that support individual and community health efforts.
7. Enforce laws and regulations that protect health and ensure safety.
8. Link people to needed personal health services and ensure the provision of health care when otherwise unavailable.
9. Assure a competent public health and personal health care workforce.
10. Evaluate the effectiveness, accessibility, and quality of personal and population-based health services.
11. Conduct research for new insights, knowledge, and innovative solutions to health problems.

Though the focus of the program is eastern North Carolina, these objectives are relevant to public health practice anywhere. They are consistent with the competencies for providing essential public health services identified by the Public Health Functions Project of the U.S. Public Health Service in *The Public Health Workforce: An Agenda for the 21<sup>st</sup> Century*.

## 2.2 Administration and Organization

The MPH degree program is administered by the Department of Public Health of the Brody School of Medicine at East Carolina University. The Program Director is also Chair of the Department of Public Health. The DPH was formed in July 2008 for the education of public health students, medical students and resident physicians. The DPH has active research, community service, and teaching responsibilities in the area of population-based prevention. The MPH Program was formerly within the Department of Family Medicine. **Exhibit 1** displays an organizational chart of the DPH within the BSOM administrative structure.

**Exhibit 1.** Organization of Department of Public Health, Brody School of Medicine, East Carolina University, October 2008



## 2.3 Curriculum

Forty-five (45) semester credit hours (s.c.h) are required for the MPH Degree. As presented in **Table 1**, curriculum requirements are 24 hours of required core courses, 15 hours of concentration-specific courses and two electives.

**Table 1.** Summary of Course Requirements by Credit Hours

<b>Course Requirements</b>	<b>Number</b>	<b>Total credit</b>
Core courses	8	24
Concentration-specific courses	6	15
Electives	2	6
<b>Total MPH program</b>	<b>16</b>	<b>45</b>

Consistent with the interdisciplinary nature of public health, five substantive areas of knowledge are offered in the MPH program as required by the accrediting body for education in public health. The eight core courses representing 24 s.c.h are required to be completed by all students. As presented in **Table 2**, the required core courses are presented by area of knowledge.

**Table 2.** Core Courses by Area of Knowledge and Credit Hours

<b>Area of Knowledge</b>	<b>Core Courses</b>	<b>Credit</b>
Health Services Administration	MPH 6000 Public Health Practice – I	3
	MPH 6002 Public Health Practice – II	3
	MPH/NURS 6035 Interdisciplinary Rural Health	3
Environmental Health	MPH/EHST 6010 Fundamentals of Environmental Health	3
Epidemiology	MPH 6011 Introduction to Epidemiology	3
	MPH 6020 Research Methods for Public Health	3
Social and Behavioral Sciences	MPH/HLTH 6013 Behavioral Sciences and Health Education	3
Biostatistics	BIOS 7061 Biostatistics for Health Professionals	3
<b>Total credit</b>		<b>24</b>

Students must select one of two concentrations after completion of their core courses.

- Analysis and Management
- Health Education and Promotion

Each concentration area, Analysis and Management or Health Education and Promotion, requires courses which must be completed as part of the program. **Table 3** presents the required courses by concentration area or concentration-specific courses required to complete the program.

**Table 3.** Required Courses by Area of Concentration and Credit Hours

<b>Concentration</b>	<b>Required Courses</b>	<b>Credits</b>
Analysis and Management	MPH 6022 Epidemiology of Infectious Diseases	3
	MPH 7061 Epidemiology of Chronic Diseases	3
	MPH 6052 001 Epidemiology of Cancer	3
	MPH 6903 Internship	3
	MPH 6991 MPH Professional Paper Proposal	2
	MPH 6992 MPH Professional Paper	1
	2 Electives	6
Health Education and Promotion	HLTH 6001 Foundations of Health Education and Promotion	3
	HLTH 6110 Intervention Strategies for Health Education and Promotion	3
	HLTH 6600 Needs Assessment in Health Education and Promotion	3
	MPH 6903 Internship	3
	MPH 6991 MPH Professional Paper Proposal	2
	MPH 6992 MPH Professional Paper	1
	2 Electives	6

Concentration-specific courses are typically completed during the fall and spring semesters of year two. Courses with sections ending in 001 are face-to-face classes and 601 are distance education classes. Some elective courses may fulfill concentration requirements if a concentration-specific course is not offered. The advisor and MPH program director must approve alternative courses to fulfill concentration requirements.

In addition to concentration-specific courses, a student must take six s.c.h of electives. An elective is any graduate level university course approved by the student’s faculty advisor for which the instructor grants permission to enroll. For example, some classes may require a pre-requisite. If a student has not taken the pre-requisite, permission from the instructor must be obtained and communicated to the advisor. With the permission of the advisor, students can register for an appropriate elective that is not on the concentration elective menu. **Table 4** lists courses that may fulfill an elective. The ECU Graduate Catalog can be found at the following link:

<http://www.ecu.edu/cs-acad/grcat/coursespublichealth.cfm> .

**Table 4.** Examples of Courses to Fulfill Elective Requirements, ECU Graduate Catalog

MPH Courses	MPH 6003: Occupational Health
	MPH 6005: African-American Health
	MPH 6007: Medical Anthropology and Public Health: A Global Perspective
	MPH 6008: Ethnic Health and Health Disparities
	MPH 6025: Delivery of Health Services
	MPH 6052: Fundamentals of Public Health Leadership
	MPH 6670: Maternal and Child Health
Other Courses	ADED 6307: Proposal Writing for Grants and Contracts

---

COHE 6000: Health Care Systems and Problems  
 COHE 6100: Community Health Administration  
 COMM 6210: Media and Health  
 COMM 6220: Interpersonal Health Communication  
 COMM 6221: Intercultural Communication in a Health Context  
 COMM 6224: Communication and Health Organizations  
 COMM 6230: Introduction to Health Communication  
 COMM 6240: Special topics in Health Communication: Family Communication  
 HIMA 5060: Health Informatics  
 HIMA 6410: Electronic Health Records  
 HLTH 6310: Sexuality Education in Health Education  
 HLTH 6355: Alcohol, Tobacco, and Other Drug Education and Prevention  
 HLTH 6700: Qualitative Research and Evaluation Methods  
 HLTH 6900: Managing Health Education and Promotion Programs  
 HLTH 7100: Qualitative Research: Analysis and Interpretation  
 PADM 6150: Health Policy Analysis  
 PADM 6400: Health Policy

---

At the beginning of the program, students are expected to meet with their advisor to map out a plan for taking classes, based on the anticipated graduation date of the student. **Exhibit 2** shows an example of curriculum taken to achieve 45 s.c.h for a full-time MPH student wishing to complete the program in two years, including summer enrollment.

---

**Exhibit 2. MPH Sample Degree Plan for Two-Year Full Time Student**

---

	<b>Course</b>	<b>Dept. Number</b>	<b>Credit Hours</b>
<b>Fall, yr 1</b>	Public Health Practice	MPH 6000	3
	Epidemiology	MPH 6011	3
	Interdisciplinary Rural Health	MPH 6035	3
	*Elective		3
			<i>TOTAL: 9 or 12</i>
<b>Spring, yr 1</b>	Environmental Health	MPH 6101	3
	Biostatistics	MPH 7021	3
	Advanced Public Health Practice	MPH 6002	3
	Research Methods (prior to 6991)	MPH 6020	3
			<i>TOTAL: 12</i>
<b>S.S. 1/2 WEEK</b>	Behavioral Health (in person)	MPH 6013	3
	Internship	MPH 6903	3
			<i>TOTAL: 6</i>
			YR 1 Total = 30

<b>Fall, yr 2</b>	Professional Paper	MPH 6991	2
	*Concentration course		3
	*Concentration course		3
			<i>TOTAL: 8</i>
<b>Spring, yr 2</b>	*Concentration course / elective		3
	*Concentration course		3
	Professional Paper II	MPH 6992	1
			<i>TOTAL: 7</i>
			<b><i>TOTAL: 45</i></b>

\*see Table 4

## 2.4 Other Requirements

Culminating experiences for MPH students consist of a field experience or internship and MPH professional paper. Each are discussed below.

**An internship** (3 s.c.h) is required of all students. The internship requirement can be waived by the Director in rare situations if substantial public health practice experience can be documented. The internship may be repeated once and substituted for one three s.c.h elective. Time and duration of internships depend upon the student's concentration. At a minimum, the internship will be 240 hours for three s.c.h.

The field experience or internship offers students the opportunity to integrate and demonstrate the application of academic knowledge with learned public health core competencies in a professional setting through exposure to one or more core functions of essential public health services.

**A professional paper** (3 s.c.h) is required of all students and serves as an applied-learning experience. The professional paper will typically describe a public health action, intervention, or an increase in knowledge useful to public health practice that has resulted from the student's internship experience, professional employment, or research. An independent study course may be used to form the research or professional experience into the professional paper. The professional paper is completed over a two semester sequence; MPH 6991 consists of developing and writing the proposal or protocol, and MPH 6992 consists conducting/completing the analysis, writing, and presenting the work. The professional paper guidelines and example can be found under the link "Professional Paper" from the MPH homepage.

### Grades required for graduation

A "B" average is required for graduation. Graduate courses with a final grade of "C" may be credited toward completion of the MPH degree program, but any student who receives a final grade of "C" on courses totaling in excess of 6 semester hours will have his or her program terminated. A student who receives two "F"s or two "C"s and an additional "C" or "F" as final grades is subject to termination.

## Student Code of Conduct

Integrity of MPH Program, students, and faculty is extremely important. All students are expected to abide by the ECU Code of Student Conduct. Plagiarism, cheating, and other misconduct are not expected among our students and will be dealt with according to the Code of Conduct. Details of Brody School of Medicine at East Carolina University MPH Code of Student Conduct can be found in MPH Program web page at <http://www.ecu.edu/mph/>.

## Competencies

Consistent with objectives of the MPH program presented earlier, students are expected to attain 40 basic public health competencies (**Appendix 1**). Students are also expected to attain a number of competencies in the concentration they have selected. Competencies are measured at several points throughout the curriculum, such as course work, internship and professional paper. **Table 5** presents the MPH competencies for the two concentrations: Health Education and Promotion and Analysis and Management.

**Table 5.** Concentration-Specific Competencies

Health Education and Promotion	
1.	Assess and prioritize individual and community needs for health education.
2.	Plan effective health education programs.
3.	Implement effective health education programs.
4.	Act as a resource person in health education.
5.	Demonstrate written and oral communication skills relative to health and health education needs, concerns, and resources.
Analysis and Management	
1.	Use critical thinking to determine whether a public health problem exists.
2.	Identify types of surveillance for specific public health problems.
3.	Develop conclusions from surveillance data.
4.	Prioritize public health problems to be addressed.
5.	Differentiate principles of investigation for acute versus chronic diseases.
6.	Create case definitions by defining the outcomes of interest.
7.	Create standard epidemiology reports including tables, graphs and charts necessary to summarize findings.
8.	Determine limitations in study design, sample selection, data collection and analysis.
9.	Recommend interventions and control measures in response to epidemiologic findings.
10.	Utilize scientific evidence in preparing recommendations for action or interventions.
11.	Assist in the development of measurable and program relevant goals.
12.	Develop and defend a program budget which includes revenues and expenditures.
13.	Analyze the organization of a health agency for strengths and weaknesses.

## 2.5 Financial Costs of Program

Because the duration of completion of the program will differ for each student, the financial commitment by semester will differ for each student. Costs are calculated based on the number of credit hours enrolled during one semester. Summer session is considered a separate semester for cost purposes. **Table 6** presents an example, based on 2008-2009 academic year costs, for the expected expenditures for tuition and fees. Costs will vary depending on the credit hours enrolled. These costs do not include enrollment in summer session.

**Table 6.** Estimated Costs of Tuition and Fees by Credit Hours by Annual and Semester (estimated 2009)

Tuition and Fees	Two	Per semester (Fall or Spring)
11/10/2008		11

	semesters Annual, full time student	9+hours	6-8 hours	3-5 hours	1-2 hours
Resident Tuition	\$ 2,816.00	1,408.00	1,055.99	704.00	351.99
Non-Resident Tuition MBA/MSA Tuition	13,132.00 MBA/MSA classes are assessed an additional \$60.00 per credit hour.	6,566.00	4,924.49	3,283.00	1,641.49
University Fees	1,331.00	665.50	499.13	332.75	166.38
Educational/Technology Fee	137.00	68.50	51.38	34.25	17.13
Health Service Fee	200.00	100.00	75.00	50.00	25.00
<b>Total (NC Resident)</b>	<b>\$ 4,484.00</b>	<b>\$ 2,242.00</b>	<b>\$ 1,681.50</b>	<b>\$ 1,121.00</b>	<b>\$ 560.50</b>
<b>Total (Non-Resident)</b>	<b>\$14,800.00</b>	<b>\$ 7,400.00</b>	<b>\$ 5,550.00</b>	<b>\$ 3,700.00</b>	<b>\$ 1,850.00</b>

**Table 7** shows an example of expenses that full-time students might expect per semester, paying either in-state or out-of-state tuition.

**Table 7.** Summary of Major Categories of Expenses by Semester and Resident Status

	<b>In-state</b>	<b>Out-of-state</b>
Tuition and fees	\$2,242	\$7,400
Books and supplies	400	400
Living expenses	4,000	4,000
Personal expenses	<u>1,800</u>	<u>1,800</u>
Estimated Total per semester	\$8,442	\$13,600

Tuition and fees change yearly. For the most current listing of tuition and fees, visit the cashier's office website: [http://www.ecu.edu/financial\\_serv/cashier/tufee.cfm](http://www.ecu.edu/financial_serv/cashier/tufee.cfm)

## 2.6 Financial Aid, Assistantships, Grants

While graduate education is financed primarily by personal savings and loans, the university provides limited financial support for graduate study through several mechanisms.

Any student gaining regular admission is eligible for consideration of a *graduate assistantship*. These awards provide a stipend of approximately \$3,750 per semester. Awards require that the student be full-time (enrolled in 9 semester hours or more) and that the student provides 20 hours per week of service to the program. Service is usually assisting faculty in teaching or research, either of which enriches the learning experience. Graduate assistantships are allotted to the program by the Graduate School and allocated to students by the Program Director.

Information about financial aid can be found at [http://www.ecu.edu/financial\\_serv/](http://www.ecu.edu/financial_serv/).

A limited number of *out-of-state tuition remissions* are available to cover the out-of-state portion of a student's tuition. The remissions are highly competitive and awarded by the MPH program. The minimum requirements are 3.0 overall GPA or a 3.0 GPA in the senior year, and an acceptable

score on the GRE. Students are strongly advised to apply to the program as early as possible to be considered. Certain *members of the armed services* and their dependent relatives, as well as *public school teachers* may be eligible for out-of-state tuition remissions.

## 2.7 Program Director and Faculty

Lloyd F. Novick, MD, MPH is the Program Director of the MPH program and Chair of the Department of Public Health. N. Ruth Little, MPH is Vice Chair for Operations. Core MPH faculty, adjunct and community- affiliated faculty are listed below in **Tables 8, 9 and 10**, respectively.

**Table 8.** Name, Rank, and Teaching Duties of Core Faculty in the ECU MPH Program

<b>Name</b>	<b>Rank</b>	<b>Teaching</b>
Eric Bailey, PhD, MPH	Professor	Health Disparities, Global Public Health, African American Health.
Judy Bernhardt, PhD, MPH	Professor	Rural Health
Jeffrey Bethel, PhD	Asst. Professor	Infectious Epidemiology, Disparities
Doyle 'Skip' Cummings, PharmD	Professor	Rural Health
Stephanie Jilcott, PhD	Asst. Professor	Nutrition and Research Methods
Hans Johnson, EdD, MS	Asst. Professor	Health Education and Promotion
Suzanne Lazorick, MD, MPH	Asst. Professor	Maternal and Child Health
C. Suzanne Lea, PhD, MPH	Assoc. Professor	Cancer Epidemiology, Methods
N. Ruth Little, MPH	Asst. Professor	Field Activities, Internship
Chris Mansfield, PhD, MS	Professor	Research Methods
Justin B. Moore, PhD, MS	Asst. Professor	Behavioral Health, Physical Activity
Lloyd F. Novick, MD, MPH	Professor	Public Health Practice
Kristina Simeonsson, MD, MSPH	Asst. Professor	Public Health Practice
Marian Swinker, MD, MPH	Professor	Chronic Dis. Epi., Occupational Health

**Table 9.** Adjunct Faculty in the ECU MPH Program

<b>Name</b>	<b>Adjunct Rank</b>	<b>School/College</b>	<b>Teaching</b>
Alice Anderson, MS, PhD	Asst. Professor	HHP	Environmental Health
Alta Andrews, MPH, DrPH	Professor	Nursing	Rural Health
Catherine Sullivan, MPH	Clin. Asst. Professor	Medicine	Nutrition
Craig Becker, PhD	Asst. Professor	HHP	Health Education
Dan Sprau, MS, DrPH	Assoc. Professor	HHP	Environmental Health
David Collier, MD, PhD	Asst. Professor	Medicine	Pediatrics
David Weismiller, MS, MD	Assoc. Professor	Medicine	Epidemiology
David White, MS, EdD	Professor	HHP	Health Education
Debbie Ramey, BS, MAED	Asst. Professor	AHEC	Continuing Education
Janet P. Moyer PhD, RN	Asst. Professor	Nursing	Healthcare Delivery
Jim Mitchell, PhD	Professor	Sociology	Geriatrics
Jim Wilson, PhD	Asst. Professor	Medicine	Healthcare Data
Kathryn Kolasa, PhD	Professor	Medicine	Applied Nutrition
Katrina DuBose, MS, PhD	Asst. Professor	HHP	Physical Activity
Kenneth DeVille, PhD, JD	Professor	Medicine	Law
Linda Kean, PhD	Assoc. Professor	Communication	Communications
Maria Clay, PhD, MAEd	Assoc. Professor	Medicine	Rural Health
Mary Glascoff, MSN, PhD	Assoc. Professor	HHP	Health Education

Pamela Larsen, FNP, DNSC	Professor	Medicine	Child Health
Paul Vos, PhD	Professor, Chair	Allied Health	Biostatistics
Robert Barnes, MPA	Assoc. Professor	HHP	Health Education
Stephen Willis, MD	Professor	AHEC	
Suzanne Orr, MA, PhD	Assoc. Professor	HHP	Health Education
Sylvie Henning, MA, PhD	Professor	Lib. Arts	International Health
Thomas Irons, MD	Professor	Medicine	Pediatrics
Wayne Cascio, MD	Professor	Medicine	Cardiology
Xiaoming Zeng, PhD	Asst. Professor	Allied Health	Biostatistics

**Table 10.** Community-Based Affiliate Faculty in the ECU MPH Program

Name	Area
Under construction	

## Advisory Board

The MPH program has a diverse external advisory board with exceptional experience to draw on for wisdom and insight. It is composed of local, state, and national public health practitioners as well as faculty and administrators of other academic public health programs.

## 2.8 Application and Admission

Admissions to the MPH program are semi-annual. While most students will be admitted to begin in fall semester, students may also begin their coursework in the spring semester.

### Application Deadlines

Deadlines for submission of admission applications are April 15 for fall semester and October 15 for spring semester. Prospective students are encouraged to apply earlier. Students may be accepted on a non-degree seeking basis up to two weeks before classes begin, with the option of converting to degree-seeking status at the start of the following semester.

### Admission Requirements

Admission to the Master of Public Health degree program requires the student to meet the minimum admission requirements for graduate study as established by the university and the following requirements established by the Master of Public Health Program.

1. Submission of one official transcript from every college or university at which applicant completed seven or more s.c.h of coursework.
2. An acceptable score on the Graduate Record Examination (GRE) taken within the past five years. The entrance exam may be waived for applicants with advanced degrees upon the recommendation of the graduate director. The Medical College Admissions Test (MCAT) may be substituted in lieu of the GRE.
3. Three letters of recommendation from persons familiar with the applicant's academic and professional capabilities, achievements, work experience, and/or personal qualities.
4. A resume or curriculum vitae.

5. A short essay (less than 600 words) explaining why the applicant wants to pursue the MPH degree and how her/his future career goals are related to the degree.

An interview is not required for admissions but may be requested at the discretion of the Program Director.

### **Verbal and Quantitative Skills**

Both verbal and quantitative skills are required of public health professionals. The admissions committee will assess skills of prospective students in a variety of ways, including prior course work and grades received, GRE or MCAT scores, professional experience and accomplishments, and personal interviews.

### **Computer Literacy**

The ability to use computers and standard software in basic public health applications is a requirement for graduate work and proficiency is the responsibility of the student.

### **Qualifications Required for Admission**

To qualify for regular admission to the Graduate School, an applicant must have a minimum overall undergraduate GPA of 2.5 or a senior year GPA of 3.0, and a satisfactory score on the required standardized test (GRE or MCAT). Admission to ECU graduate programs is competitive, and most students have credentials above the minimum requirements listed here.

Acceptance into the Master of Public Health Program is determined by the graduate faculty based on evaluation of the applicant's record of scholarship, standardized test scores, professional experience and accomplishments, the required essay, references, and personal interview (if one occurred). The faculty of the public health program establishes guidelines. Graduates are admitted by a formal letter from the Graduate School.

### **How to Apply**

Applicants apply to the MPH program by completing a "self-managed" application to the Graduate School. The application may be submitted either electronically or on paper forms. The application and instructions can be downloaded from the graduate school website at <http://www.ecu.edu/cs-acad/gradschool/results.cfm?id=125>. The application deadline can be found at <http://www.research2.ecu.edu/Gradschool/Application%20Deadlines.htm>.

If applicant cannot download and print the paper forms, these forms may be obtained from the graduate school along with the *Graduate School Program Information* booklet. Applicant may obtain forms in person by visiting the Graduate School in Ragsdale Hall, request one be sent to you by telephone (252) 328-6012, or by e-mail at [gradschool@mail.ecu.edu](mailto:gradschool@mail.ecu.edu).

### **Equal Opportunity Policy of East Carolina University**

East Carolina University is committed to equality of opportunity and does not discriminate against applicants, students, or employees based on race, religion, color, creed, national origin, sex, age, sexual orientation, or disability. Please see details at <http://www.ecu.edu/oie/>.

## 2.9 Frequently Asked Questions about the ECU MPH program at the Brody School of Medicine.

- **How many credit hours are required for graduation?** 45 semester credit hours.
- **Are all students required to complete an internship in public health?** Yes. The internship is an integral component of the MPH Program. Students with substantial previous field experience may petition to be exempt from the internship requirement or a portion thereof. Exemption is at the discretion of the MPH Program Director.
- **How long will it take to complete the degree requirements?** It depends on whether you pursue this on a full-time basis or part-time. Students can complete the program in 2 to 4 years.
- **Can I transfer courses from another master of public health program?** With approval of the program and Dean of the Graduate School, up to 12 credit hours may be transferred, depending on how well a course matches the ECU MPH course substituted.
- **Can I transfer courses from another graduate program?** Yes. With approval of the program and Dean of the Graduate School, up to 12 credit hours may be transferred. The 12-hour limit applies to all transfers or inter-institutional electives.
- **Are courses offered in the evening?** Most courses are offered in the late afternoon or early evening once per week for three hours.
- **Can I take courses on-line?** Some courses are available in distance education format. Courses with sections ending in 601 are online courses. Courses with section 001 are face-to-face courses.
- **How do I apply?** Through an application to the ECU graduate school at <http://www.ecu.edu/gradschool>.
- **What is the application deadline?** Deadlines for submission of admission applications are April 15 for fall semester and October 15 for spring semester. Prospective students are strongly urged to apply well before the deadline. Late admission considered based on program capacity.
- **What is the program code I should put on the application in item 10?** Program code 159.
- **Are students accepted only for fall admission?** Students may start in either the fall or spring semester.
- **What entrance exams and scores are required?** The Graduate Record Exam (GRE) is used as one gauge of an applicant's ability to complete the program. MCAT may be substituted for the GRE. Acceptance into the program is based on evaluation of the applicant's record of scholarship, standardized test scores, professional experience and accomplishments, the required essay, references, and personal interview (optional). Until the program gains experience sufficient to relate students' successful completion of the program to entrance exam scores, the minimum requirements of the graduate school will be used, which specify a suitable combination of grades and standardized examination scores.
- **Must I take the Graduate Record Exam if I have already completed a graduate degree?** It depends on what the graduate program was, how recently you completed it, and what your grades in the graduate program were. If you are interested in waiving the GRE, you must receive written consent from the MPH Program Director **BEFORE** the application deadline.
- **How do I find more about the Graduate Record Exam (GRE)?** Go to [www.gre.com](http://www.gre.com)
- **Is there any financial aid?** Financial Aid is limited. See the information at <http://www.ecu.edu/financial/>

- **Is the program accredited?** ECU is accredited by the Southern Association of Colleges. The MPH Program was fully accredited in 2007 by Council on Education for Public Health.

## Contact information

Student Services Coordinator  
Brody School of Medicine at East Carolina University  
Department of Public Health  
Hardy Building, 1709 W. Sixth Street (FedEX), Greenville, NC 27834  
Tel: (252) 744-4079, Fax: (252) 744-4008  
Email: [mph@ecu.edu](mailto:mph@ecu.edu)

**Appendix 1. 40** Public Health Competencies by 5 Areas of Knowledge at Degree Completion.  
<http://www.asph.org/document.cfm?page=851>

Biostatistics

1. Apply descriptive techniques commonly used to summarize public health data
2. Use key concepts of probability, random variation and commonly used statistical probability distributions
3. Apply common statistical methods for inference
4. Interpret results of statistical analyses found in public health studies
5. Use vital statistics and other public health records in the description of population health characteristics and in public health research and evaluation

Environmental Health

6. Specify approaches for assessing, preventing, and controlling environmental hazards that pose risks to human health and safety
7. Specify current environmental risk assessment methods
8. Describe genetic, physiologic and psychosocial factors that affect susceptibility to adverse health outcomes following exposure to environmental hazards
9. Discuss various risk management and risk communication approaches in relation to issues of environmental justice and equity
10. Describe federal and state regulatory programs, guidelines, and authorities that control environmental health issues.

Epidemiology

11. Describe a public health problem in terms of magnitude, person, time, and place
12. Calculate basic epidemiology measures
13. Evaluate the strengths and limitations of epidemiologic reports
14. Comprehend basic ethical and legal principles pertaining to the collection, maintenance, use and dissemination of epidemiologic data
15. Recognize the principles and limitations of public health screening programs

Health Policy and Management

16. Identify the main components and issues of the organization, financing and delivery of health services in the US
17. Describe the legal and ethical bases for public health and health services
18. Apply quality and performance improvement concepts to address organizational performance issues
19. Use the principles of program planning, development, budgeting, management, and evaluation in organizational and community initiatives
20. Explain methods of ensuring community health safety and preparedness

Public Health Biology

21. Describe how behavior alters human biology
22. Explain how genetics and genomics affect disease processes and public health policy and practice

Social and Behavioral Science

23. Describe the role of social and community factors in both the onset and solution of public health problems
24. Identify basic theories, concepts, and models from a range of social and behavioral disciplines that are used in public health research and practice
25. Identify individual, organizational, and community concerns, assets, resources and deficits

- for social and behavioral science interventions
26. Use evidence-based approaches in the development and evaluation of social and behavioral science interventions
  27. Describe steps and procedures for the planning, implementation and evaluation of public health programs, policies, and interventions

#### Communication

28. Develop cogent and persuasive written materials regarding public health topics
29. Deliver oral presentations using recognized criteria for effective information dissemination

#### Diversity and Cultural Proficiency

30. Demonstrate sensitivity to varied cultural, ethnic, and socioeconomic backgrounds of individuals, and groups, including: education, health, literacy, race, gender, age, profession, political preferences, health conditions, religion/spirituality, place of origin, sexual orientation and lifestyle
31. Recognize the varied levels of health access among individuals and within communities

#### Leadership

32. Provide examples of vision, mission, and core values for an organization
33. Encourage commitment to teamwork
34. Demonstrate basic negotiation and conflict management skills

#### Professionalism and Ethics

35. Apply ethical principles in both personal and professional interactions
36. Apply evidence-based concepts in public health decision-making

#### Program Planning and Assessment

37. Prepare a program budget
38. Monitor program performance and intervention fidelity
39. Prepare proposals for funding from internal and external sources

#### Systems Thinking

40. Outline the 10 essential public health services and their application to the major disciplines of public health