



Access!

News from the Irene Howell
Assistive Technology Center



Issue 1. Spring, 2011



Welcome to the Irene Howell Assistive Technology Center Newsletter

If you haven't been in the Center for a while (or ever), you might want to stop by and see our new look. We have changed the configuration of our desks, machines and devices to accommodate an "interactive exhibit" model. We hope to have this new configuration ready for a grand opening in April. This is a model with which we hope to serve more students and faculty across campus, as our library of training and research materials continues to expand and develop.

Our mission has changed focus since 2009, from direct service and community outreach, to an emphasis on *training of professionals to use assistive technologies*. We expect to expand this training across campus within the next 5 years.



Our New Look!

See page 1

The Assistive Technology Graduate Certificate

See page 2

Research Opportunities and Partnerships

See page 3

Our Mission

See page 4

Spring Student Staff

See page 5



Access!

News from the Irene Howell
Assistive Technology Center

The Assistive Technology Graduate Certificate: Now Recruiting For Summer 1, 2011

Who Participates in the Certificate Program?

- People with undergraduate degrees who work with children or adults with disabilities
- Teachers, occupational therapists, speech therapists, recreational therapists, rehabilitation counselors, physical therapists, engineers, and family members to name just a few

What Does the Certificate Prepare You To Do?

- Becoming school or clinic leaders in assistive technology
- Using assistive technology to enhance a student's or client's functional performance

Is any of the Certificate Program Online?

- It is 100% online.

Are There Scholarships?

Students may qualify for Pathways funding if they serve students with severe/multiple disabilities. For information about Pathways, contact Alana Zambone at zambonea@ecu.edu.

What is Included in the 12-Hour Certificate Program?

SPED 6701 (3) Technology Devices and Services

SPED 6702(3) Assessment, Planning, and Implementation of Assistive Technologies

SPED 6703/OCCT 6703 (3) Collaborative Resource Management of Assistive Technology

One elective selected with the advisor.

For more information about the AT Certificate, visit <http://www.ecu.edu/cs-educ/ci/sped/at/gradcert.cfm>



Interested in Doing Some Research on Assistive Technology?

Check out the Space Grant collaborative for some possible funding options!

<http://www.ncspacegrant.org/opps/students.html>

We have a whole set of new devices, software and hardware that you can study.

The Center can support you in the areas of designing a study, seeking funds, one-on-one work with individuals with disabilities, and providing limited amount of assistive equipment and software.

Seeking Researchers to Test New Equipment and Software

We are looking for students, teachers and/or ECU faculty who are interested in conducting small research studies around assistive technology that we have recently acquired. The following is a list of items around which we are currently encouraging research.

TAP-It Touch Screen (In Irene Howell Assistive Technology Center, but transportable)

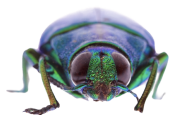
- A touch screen whose platform and panel move and tilt separately, providing an accessible, individualized learning environment. Especially helpful for individuals in wheelchairs.

VizZle software from Monarch Technologies (Online, accessible anywhere, developed for individuals with autism, but works well with many populations. Also works well on the SmartBoard or TAP-It)

- Filled with images, embedded videos and audio (recorded voice, text to speech or even mp3 recordings), built-in reinforcers and celebrations, VizZle lessons are made to engage.
- Fully customize any pre-made lesson from the shared library. Or access easy-to-use yet powerful templates for creating lessons and tools fully supported with images, video and audio.
- Thousands of peer-reviewed lessons by educators across the country using VizZle every day in their classrooms and homes

b-Calm (“Audio sedation”: Developed for persons with autism, but useful for other populations, vendor will supply what you need on request.)

- A unique blend of sounds specifically designed to mask distracting noises in the classroom or home.
- The system works as an “acoustic shield” to mask disturbing environmental noises that distract and derail many students with ASD and ADHD.
- Disturbing noises are blocked and replaced with familiar and soothing sounds from nature.



Our Mission

In accordance with the funding agreement made with Irene Howell in 2004, our central mission is to better prepare teachers in the use of assistive technology for individuals with disabilities.

- This includes our undergraduate and graduate degree and certificate programs, and extension of training to the College of Education, as well as outside ECU entities interested in training.
- Among future plans under the agreement are extensive community outreach on and off campus, an annual symposium and long-term loan programs for families, residential facilities and schools.

In addition to the original goals, we also assist faculty and students with research and creative activity around assistive technologies.



We are in 128 Rivers. Need help with directions? Call 328-6828.



Watch for Upcoming Presentation series!

As we continue to develop our new training model, we will be conducting a series of presentations to faculty and/or students who are interested in learning more about how assistive technologies. We believe that many of the products we purchase can enhance educational experiences for students with and without disabilities.

Particularly of interest right now is our "literacy" area, where AT can assist in including students with disabilities and those who speak English as a second language.

We also are working on an extensive training program for using alternate access items such as SmartBoard, Intellikeys, and TAP-it.

Our training series and topics will be announced in the May issue of our eNewsletter.

Spring Staff

All student staff of the AT Center work under 10 hours per week.

Lindsay Stump. Lindsay has been with the Center going on 3 years! She is excited about assistive technology and has recently changed her major this year to Special Education.

Kelly Smith. Kelly joined us last spring (2010), and has become a very important part of the staff. He can fix nearly anything, and he's full of great ideas and creative energy.

Matt Stump. Matt is a Physics major who has been with us for 2 years. We will be sad to see him leave us when he graduates in May.

Deandra Woods. Dee joined our crew in the fall as a work-study student. Dee is a pre-med major, and when not working on some AT project she is studying for some impossible exam.

Kathleen Pearce. Kathleen joined the staff as a work-study student after seeing an AT presentation. She is an Elementary Education major, with the creative spark and humor necessary for that role. She administers our Facebook page.

Matthew Haskett. Matthew is our newest member. He is the graduate assistant assigned to the Center. He is an International Studies major currently in the process of learning his way around the Center.

Melissa Engleman. Dr. Engleman is the Interim Director, and is constantly trying to learn more about assistive technology applications and how to best provide training and conduct research.



Access!

Spring, 2011



AT Center Hours for Spring 2011

Stop by during open hours, or make an appointment at 328-6828.

Monday through Friday

9-1 for General Student Computer Use

Monday through Friday

1-7 for Assistive Technology Activities Only

Thursday afternoons

Pitt County Schools Special Education Training in Assistive Technology, 3:30-5

Visit our web page at

<http://www.ecu.edu/cs-educ/ci/sped/at/index.cfm>

Or be our friend on Facebook!

<http://www.facebook.com/pages/Irene-Howell-Assistive-Technology-Center/170561346298298?ref=ts&v=wall>