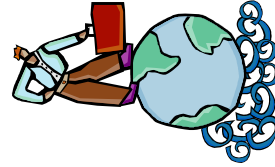


## North Carolina GlaxoSmithKline Foundation

The North Carolina GlaxoSmith-Kline Foundation, chartered in 1986, began awarding grants in 1987. To date the Foundation has paid out \$37.4 million in grants with another \$0.6 million to be paid in multi-year grants. The Foundation typically supports programs in North Carolina that help to meet the educational needs of today's society and of future generations. This Foundation seeks out programs that make a true difference in people's lives and promote the sciences, health, and education.



Please send all correspondences regarding

East Carolina Reach Up  
Scholarship Program to:

Reach Up Program  
Flanagan Building 313  
East Carolina University  
Greenville, NC  
27858-4353

Phone: (252) 328-9366 or

(252) 328-9353

Fax: (252) 328-9371

Email: [milesr@ecu.edu](mailto:milesr@ecu.edu)

Website: <http://www.ecu.edu/cs-educ/msed/>

MathandScience.cfm



*East Carolina University is committed to equality of educational opportunity and does not discriminate against applicants, students, or employees based on race, color, national origin, religion, sex, sexual orientation, or disability. ECU is an equal opportunity/affirmative action employer, which accommodates the needs of individuals with disabilities.*

## East Carolina Reach Up Scholarship Program 2009-2010



July 13-17

July 20-24

July 27-31

East Carolina University

Sponsored by:

North Carolina GlaxoSmithKline Foundation  
ECU College of Education /Department of  
Mathematics and Science Education  
College of Arts and Science/ Departments of  
Biology, Chemistry, and Geological Sciences

## Program Overview

The mission of the East Carolina Reach Up Scholarship Program is to address issues affecting the science education of African-American students in Pitt County.

### Program Description

The Reach Up Program is a nonresidential science enrichment program designed to provide African-American middle school students an opportunity to excel in science by:

- Improving student competence in science
- Connecting science to student experiences
- Encouraging and motivating students to pursue science-related careers

The program format will include participation in “hands-on” experiments in the biology, chemistry and geology labs on the ECU campus, **designing scientific research for a science fair project**, presenting scientific research and discussions with scientists about occupations in science. An emphasis will be placed on preparing African-American students for end-of-grade testing in science.

### Program Dates

The nonresidential science enrichment program will begin during the summer for three weeks on the campus of East Carolina University, **Monday through Friday.**

**July 13-17 and July 20-24 and July 27-31.**

**8 a.m. to 4:00 p.m.**

**Students will be expected to work on and complete science fair projects during the 2009-2010 academic year.**

**Tutorial sessions will also be made available during the school year.**

**Cost:** The program is **Free** to all

Participants.

**Criteria:** Applicants must be:

- African-American Pitt County Public School students in grades 6-8.
- Have a level 3 or higher in Reading and Math.
- interested in acquiring skills to improve academic achievement in science.

**Application Process:** Any student

interested in attending the program must submit a completed application by **Friday, April 3, 2009 to the East Carolina Reach Up Scholarship Program** at East Carolina University. The application must have one letter of recommendation from a science teacher or guidance counselor. Twenty-four students from the eligible applicants will be selected. Acceptance information will be mailed to schools by **Friday, May 15, 2009.**



Please send all correspondences regarding East Carolina Reach Up Scholarship Program to:  
Reach Up Program  
Flanagan Building 313  
East Carolina University  
Greenville, NC  
27858-4353  
Phone: (252) 328-9366 or  
(252) 328-9353  
Fax: (252) 328-9371