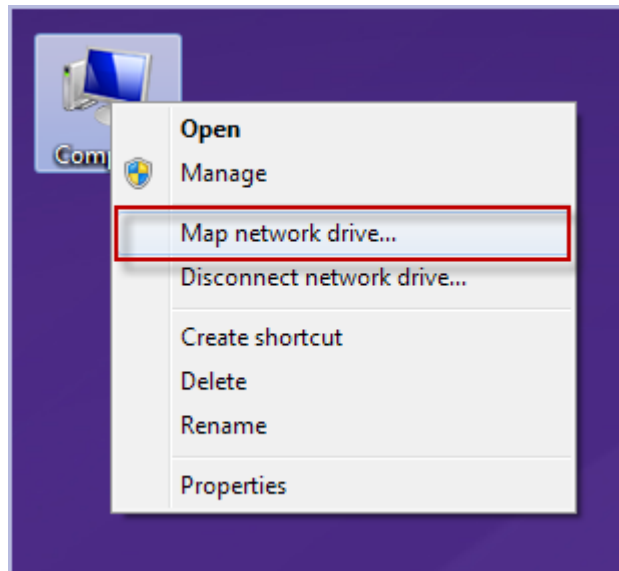


## Map a Network Drive to Piratedrive

NOTE: This tutorial was created using Windows 7 operating system.



Screenshot Using Windows 7

### Step 1. Check that you are logged in to the INTRA domain with your own PirateID.

From Windows 7, press **Start**; the current user's name shows at the top right of the dialog box. Windows XP users should press Ctrl + Alt + Delete to open the **Task Manager** dialog box.

### Step 2. Open the "Map Network Drive" dialog box.

From the desktop, right-click the **Computer** icon and choose, **Map network drive...**

### Step 3. Type the path into the "Folder" textbox.

Press the "Finish" button.

Keep the default drive letter or change it.

#### Personal Piratedrive:

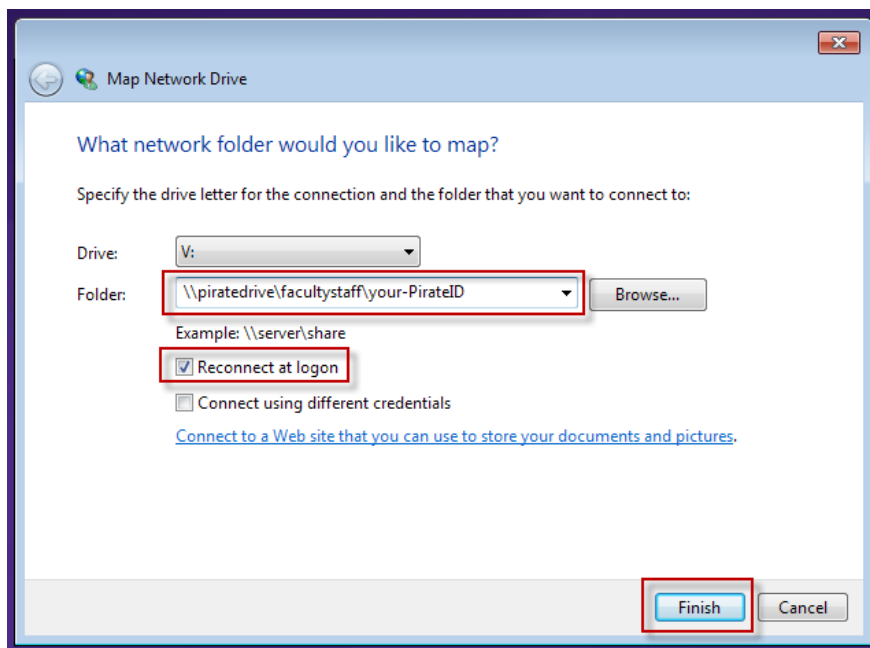
[\\piratedrive\facultystaff\your-PirateID](#)

#### Department Piratedrive:

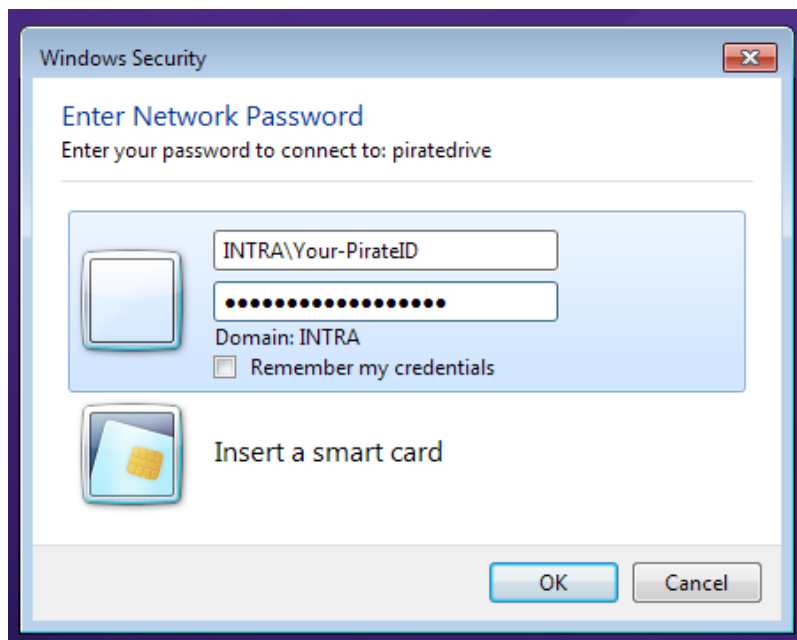
[\\piratedrive\folder-name](#)

The folder name will be provided by the department administrator.

Check the **Reconnect at Logon** box, and your computer will automatically map the drive each time you restart.



Screenshot Using Windows 7



Screenshot Using Windows 7

**If you are using a public computer, Click the “Connect using different credentials” checkbox.**

The **Windows Security** dialog box opens.

Type **INTRA** and your **PirateID**, then your passphrase.

**Example: INTRA\Your-PirateID**

Click **OK**. Click **Finish**.

**Windows XP users will see the box below.**

